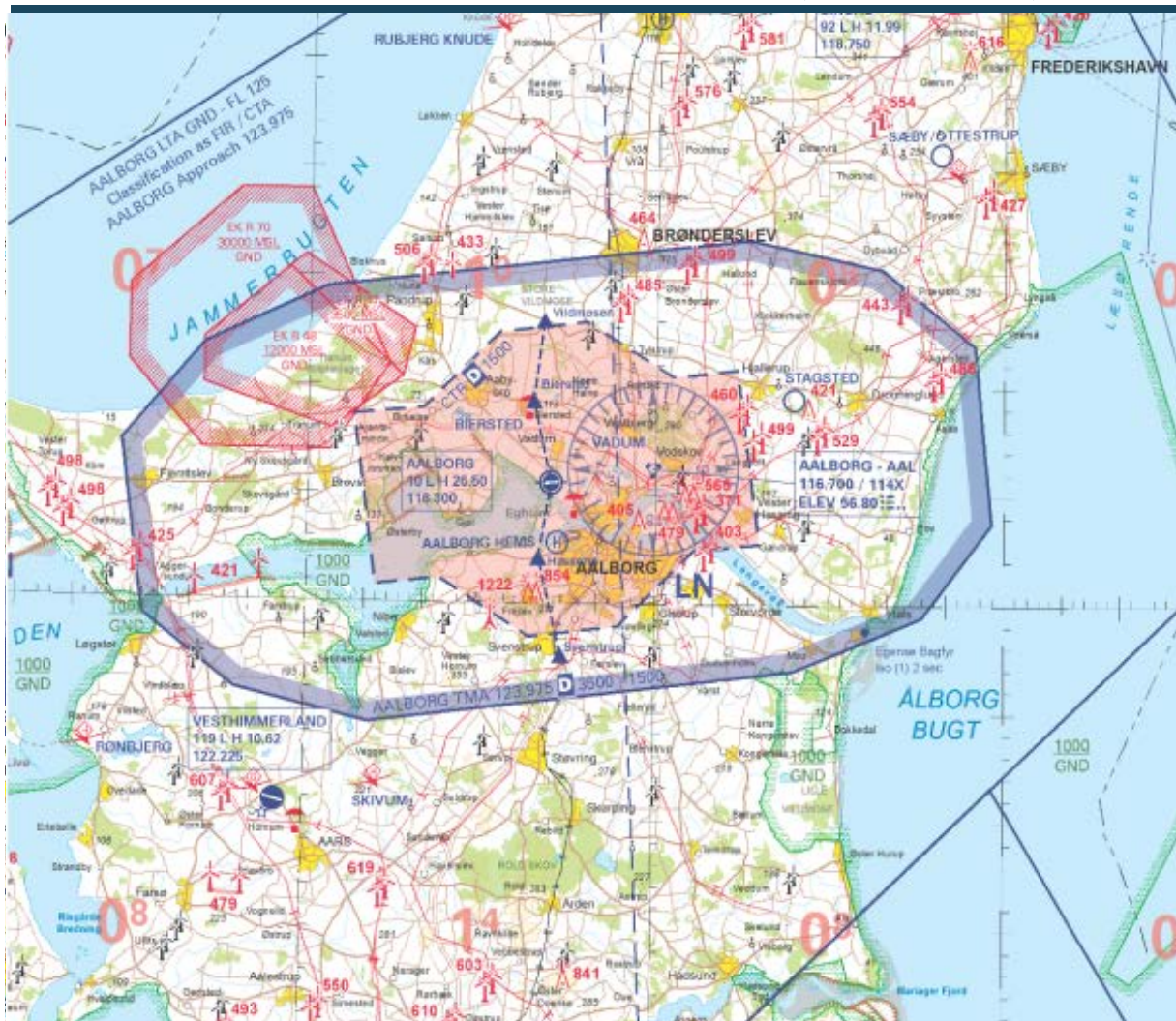


Aalborg Airport (EKYT)



CHARTS

By VATSIM-Scandinavia

Elevation 10'	Transition Altitude 3000'	More Charts aim.naviair.dk	Tower 118.305	APP 123.980	ACC Copenhagen 136.485
-------------------------	-------------------------------------	--------------------------------------	-------------------------	-----------------------	----------------------------------

EKYT
Quick Reference notes

Direct points	Runway 08L →	← Runway 26R	Direct points
---------------	---------------------	---------------------	---------------

GIPUG (TOSVO - KUDEV)	ILS AAR 109.9/079°	ILS γT 111.55 / 259°	BAKIT (UPZIW - EWTIQ)
---------------------------------	------------------------------	--------------------------------	---------------------------------

GENERA

- Main runway for TO/LDG is 08LR/26R. 08R/26L is only for VFR traffic
- Non-Precision Approaches are: RNAV
- If local ATC is not online contact ACC Copenhagen on 136.485

Arrival

- No STARs available. Arrival via GIPUG / BAKIT
- For Visual approaches maintain min. 2300 while overhead city of Aalborg

Taxi & Parking

- Taxiing North of Runway 08L/26R is prohibited due to military area
- Expect to vacate the runways via C, A or E
- Note that taxiways B & D are only 15m wide. Use caution with jet aircrafts
- Expect parking at stands 1-8. Heavy aircraft at Stand 10

Departure

- No SIDs in Aalborg. Expect to be cleared via flightplan.
- Expect initial climb FL120
- Noise abatement in force - Take-off restrictions IFR jet aircraft

RWY 08L/R: Turn must not be commenced until having passed 2 NM on radial 259 of AAL VOR/DME.

RWY 26L/R: Turn to the South must not be commenced until having passed 2000 FT

Propeller and turboprop aeroplanes No restrictions.

AERODROME CHART - ICAO

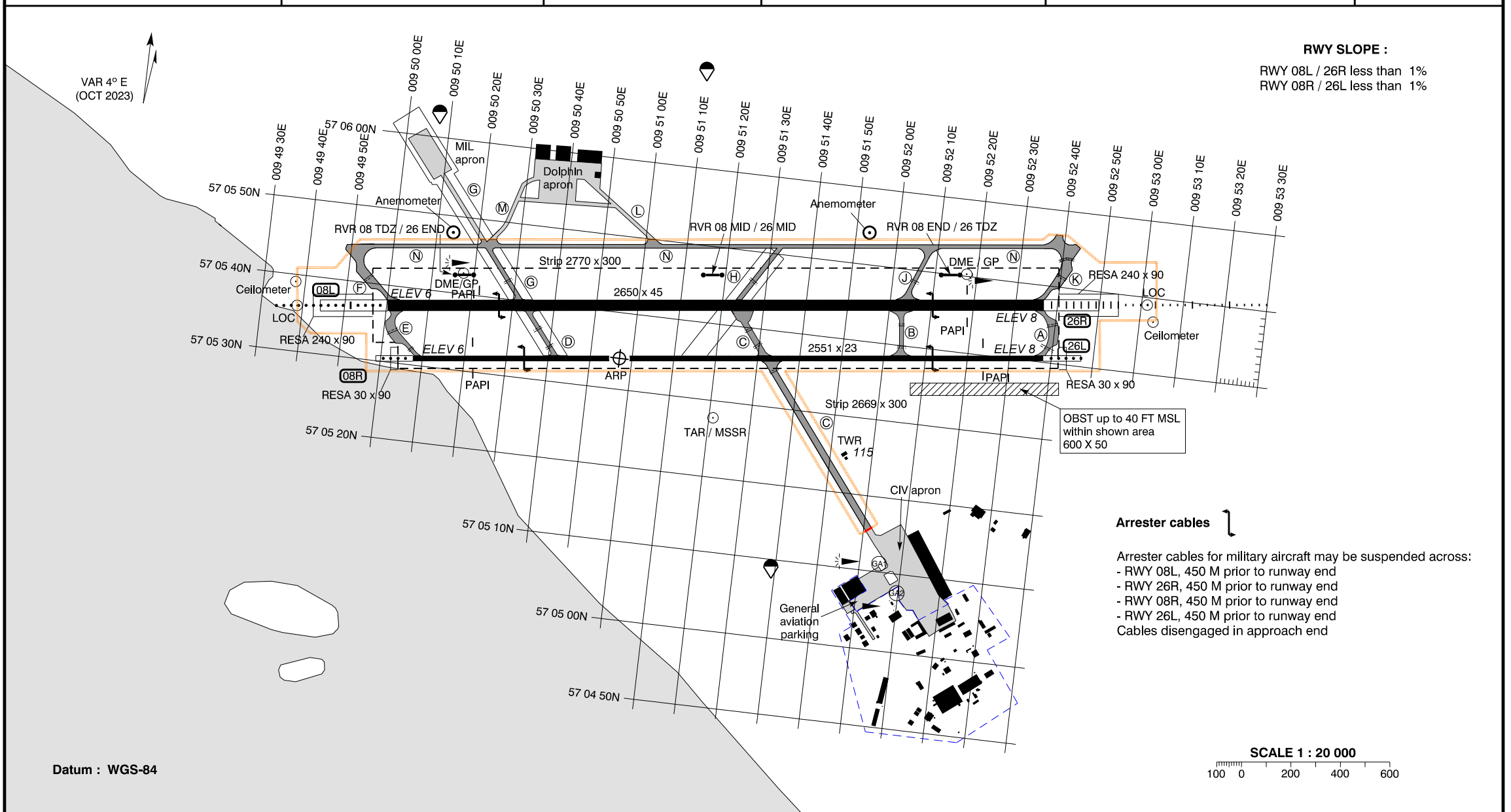
ARP : 57 05 34.04N
009 50 56.99E

AD ELEV : 8 FT

ELEV in FT
Dimensions / Distances in M

Aalborg APP : 123.980 362.450
Aalborg TWR : 118.305 353.525
ATIS : 120.480 257.800

**AD 2 - EKYT
ADC
Aalborg (CIV / MIL)**

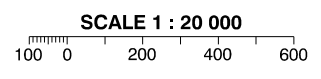


RWY SLOPE :
RWY 08L / 26R less than 1%
RWY 08R / 26L less than 1%

Arrester cables

Arrester cables for military aircraft may be suspended across:
- RWY 08L, 450 M prior to runway end
- RWY 26R, 450 M prior to runway end
- RWY 08R, 450 M prior to runway end
- RWY 26L, 450 M prior to runway end
Cables disengaged in approach end

Datum : WGS-84



Changes : VAR, RWY MAG bearings and ELEV changed.

RUNWAYS														TAXIWAYS							
NR	Direction	THR PSN	Pavement Strength	Day marking	Declared distances					APCH and RWY LGT (Unless otherwise stated lighting is LIH adjustable)							Width :	Pavement :	Strength :	Day marking :	Lighting :
					PSN TWY	TORA	TODA	ASDA	LDA	APCH	THR	TDZ	PAPI	Centre line	Edge	End					
08L	083.3° GEO 079.3° MAG	57 05 37.37N 009 50 00.30E	Concrete / Asphalt PCN 66 F / D / W / T Composite construction	THR RWY NR TDZ Centre line Side stripes	E/F	2650	2650	2650	2650	470 M White	Green	Hatched	3.00°	2650 M 15 M White: 0-1750 M White/red: 1750-2350 M Red: from 2350 M	2650 M White	Red	Concrete / Asphalt	PCN 52 / F / D / W / T Composite construction	Centre line, Side stripes, Holding position	TWY A, TWY C, TWY D, TWY E, TWY F, TWY G, TWY H, TWY K and TWY N : Blue edge RGL for RWY 08L / 26R	
					G	2151	2151	2151													
					D	2090	2090	2090													
					C	1243	1243	1243													
					H	1240	1240	1240													
26R	263.3° GEO 259.3° MAG	57 05 47.43N 009 52 36.63E	Asphalt PCN 52 F / D / X / U	THR RWY NR Centre line Side stripes	A/K	2650	2650	2650	2650	900 M CAT II/III	Green	900 M White	3.00°	2550 M Yellow LIL	Red	Concrete / Asphalt	PCN 52 / F / D / W / T Composite construction	Centre line, Side stripes, Holding position	TWY A, TWY C, TWY D, TWY E, TWY F, TWY G, TWY H, TWY K and TWY N : Blue edge RGL for RWY 08L / 26R		
					J	2116	2116	2116													
					B	2082	2082	2082													
					H	1449	1449	1449													
					C	1449	1449	1449													
08R	083.3° GEO 079.3° MAG	57 05 30.87N 009 50 07.68E	Asphalt PCN 52 F / D / X / U	THR RWY NR Centre line Side stripes	E	2551	2551	2551	2551	150 M White LIL, Cross- bar 150 M from THR	Green LIL	Hatched	2.75°	2550 M Yellow LIL	Red LIL	Concrete / Asphalt	PCN 52 / F / D / W / T Composite construction	Centre line, Side stripes, Holding position	TWY A, TWY C, TWY D, TWY E, TWY F, TWY G, TWY H, TWY K and TWY N : Blue edge RGL for RWY 08L / 26R		
					A	2551	2551	2551	2551												
26L	263.3° GEO 259.3° MAG	57 05 40.52N 009 52 38.07E	Asphalt PCN 52 F / D / X / U	THR RWY NR Centre line Side stripes	E	2551	2551	2551	2551	150 M White LIL, Cross- bar 150 M from THR	Green LIL	Hatched	2.75°	2550 M Yellow LIL	Red LIL	Concrete / Asphalt	PCN 52 / F / D / W / T Composite construction	Centre line, Side stripes, Holding position	TWY A, TWY C, TWY D, TWY E, TWY F, TWY G, TWY H, TWY K and TWY N : Blue edge RGL for RWY 08L / 26R		
					A	2551	2551	2551	2551												

OTHER : Secondary power supply : Yes, switch-over time CAT II/III MAX 1 SEC, switch-over time during departures with RVR less than 800M MAX 1 SEC, otherwise MAX 15 SEC.

OBSTACLES : All obstacles are marked by day and night

PERMITTED TAXI ROUTES FOR CAT D AND E AIRCRAFT

AD 2 - EKYT
GMC
Aalborg

Permitted taxi routes outside Apron :

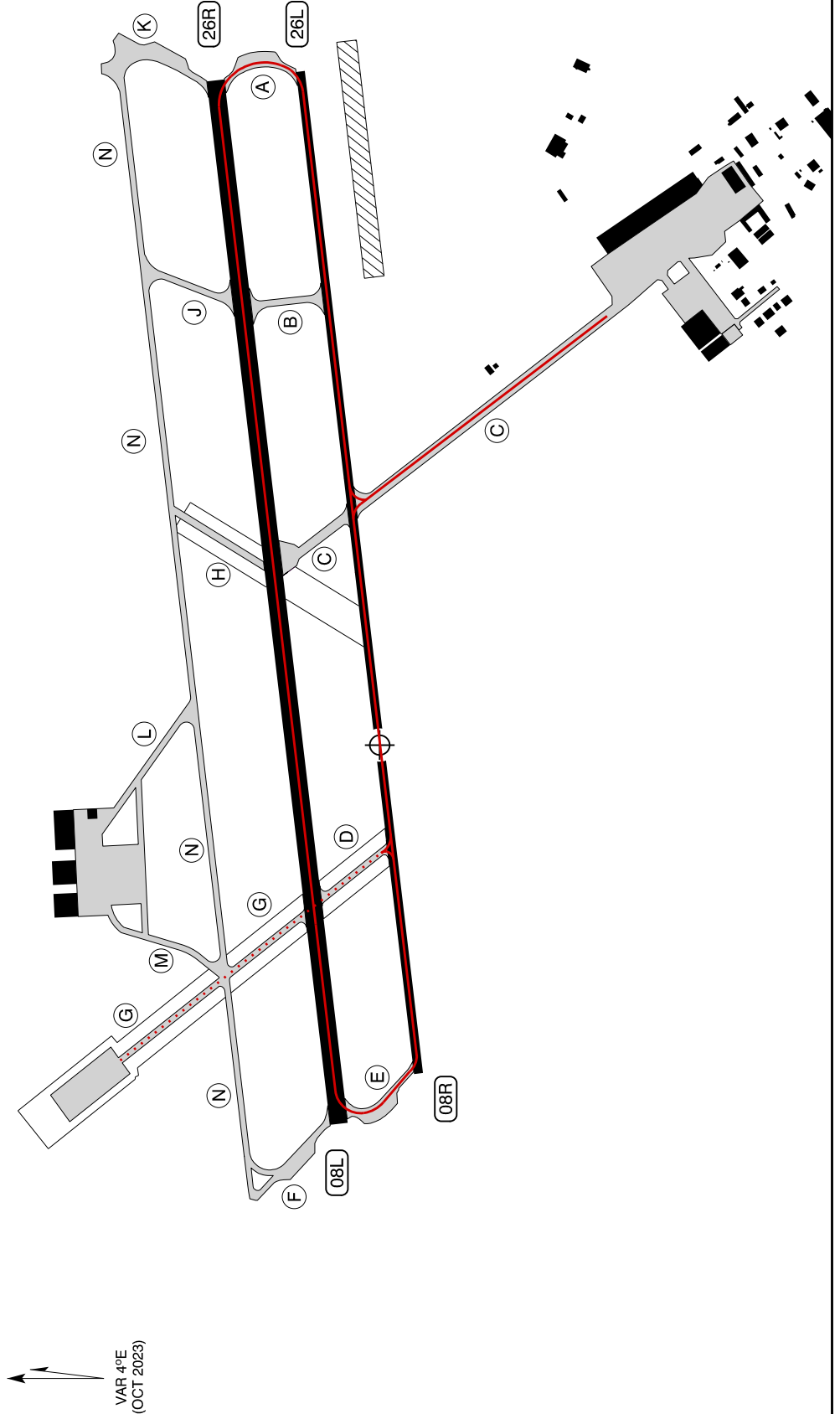
— Taxi routes

..... Taxi routes with special restrictions, see note

Note :
TWY D and TWY G only to be used for crossing RWY 08L/ RWY 26R.
Line-up or vacate RWY 08L or RWY 26R via TWY D or TWY G not permitted.

The taxi routes shown ensure sufficient width of taxiways for the above mentioned aircraft according to EASA Certification Specifications

CAT D and E aircraft includes aircraft with a wingspan from 36M up to but not including 65M.

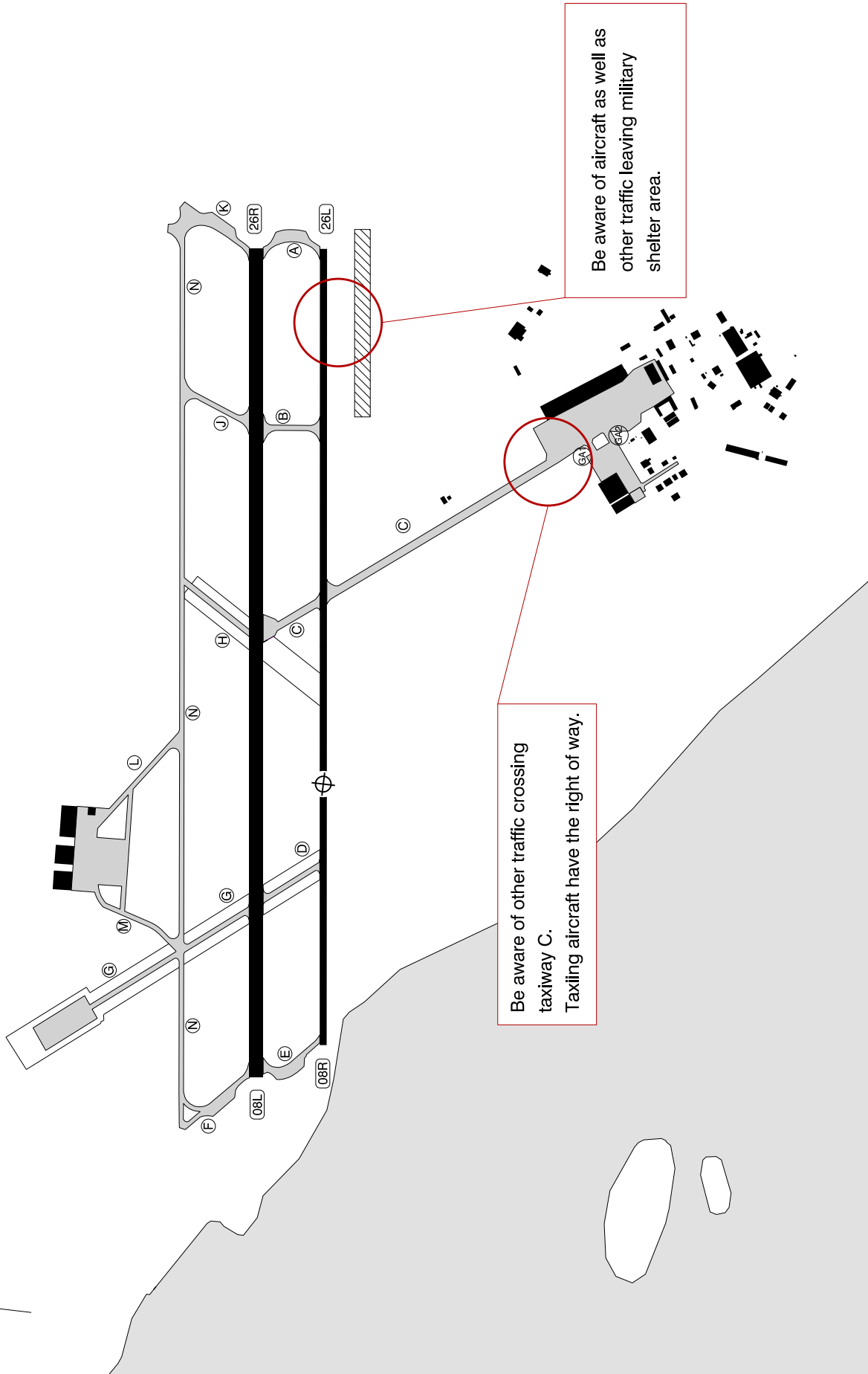


Changes : VAR changed.

HOT SPOTS

AD 2 - EKYT
HOT SPOTS
Aalborg (CIV / MIL)

LEGEND:
○ Hot Spot



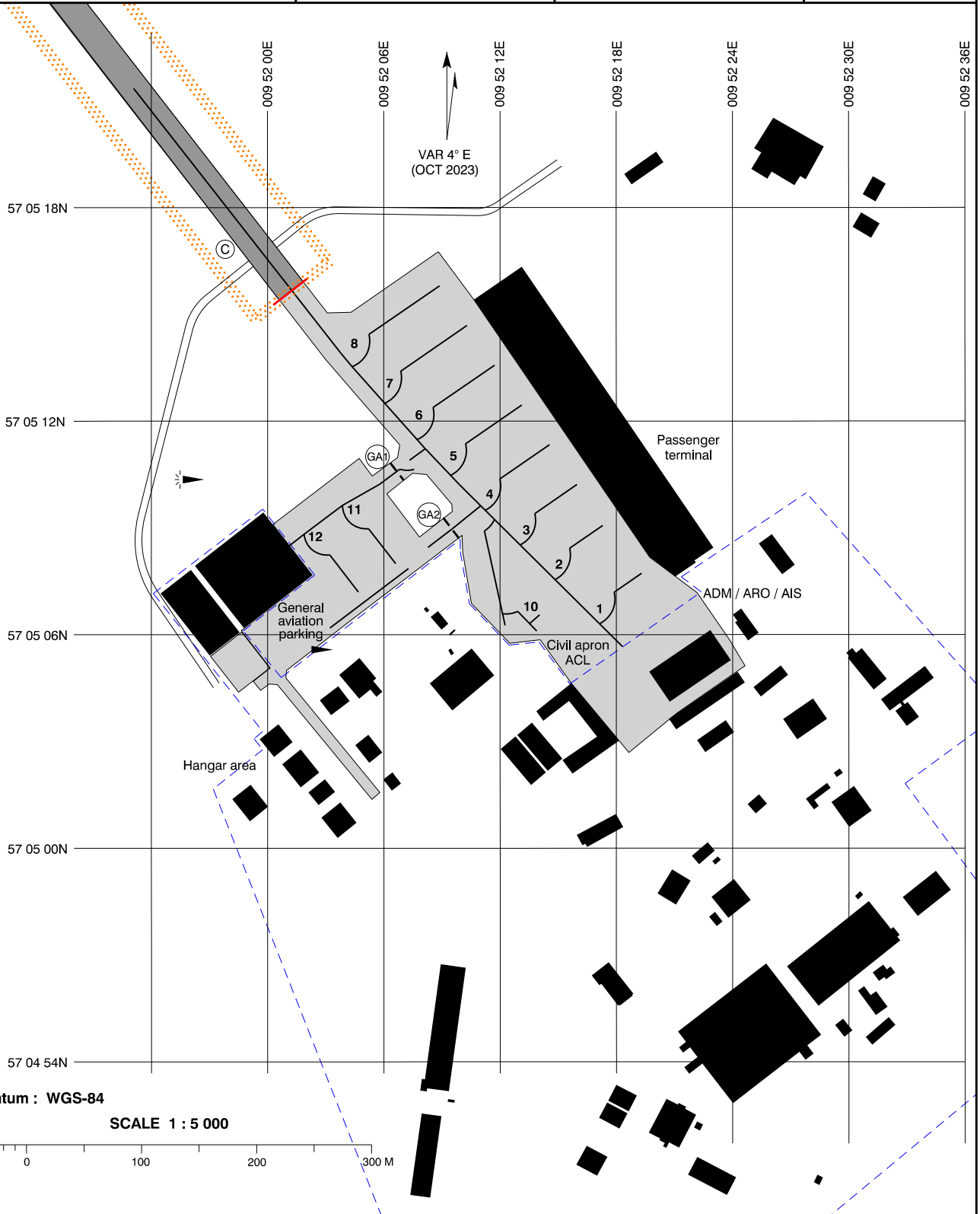
Changes : New chart.

**AIRCRAFT PARKING / DOCKING
CHART - ICAO**

CIV apron ELEV : 7 FT

Aalborg TWR : 118.305 353.525
257.800
ATIS : 120.480

**AD 2 - EKYT
APDC
Aalborg (CIV / MIL)**



Changes : VAR and Apron ELEV changed.

TAXIWAYS

See aerodrome chart

CIV APRON PAVEMENT AND STRENGTH

Stand 1 PCN 42/F/D/W/T Asphalt	Stand 6 - 8 PCN 71/R/D/W/T Concrete
Stand 2 - 3 PCN 52/R/D/W/T Concrete	Stand 10 PCN 52/F/D/W/T Asphalt
Stand 4 - 5 PCN 57/R/D/W/T Concrete	Other parts of apron PCN 39/R/D/X/U Other

INS COORDINATES FOR AIRCRAFT STANDS

1 -	57 05 07.51N	009 52 18.78E
2 -	57 05 08.84N	009 52 16.73E
3 -	57 05 09.80N	009 52 14.88E
4 -	57 05 10.92N	009 52 13.47E
5 -	57 05 12.03N	009 52 12.05E
6 -	57 05 13.15N	009 52 10.63E
7 -	57 05 14.27N	009 52 09.21E
8 -	57 05 15.39N	009 52 07.80E
10 -	57 05 07.20N	009 52 11.88E
11 -	57 05 08.26N	009 52 06.35E
12 -	57 05 07.49N	009 52 04.40E

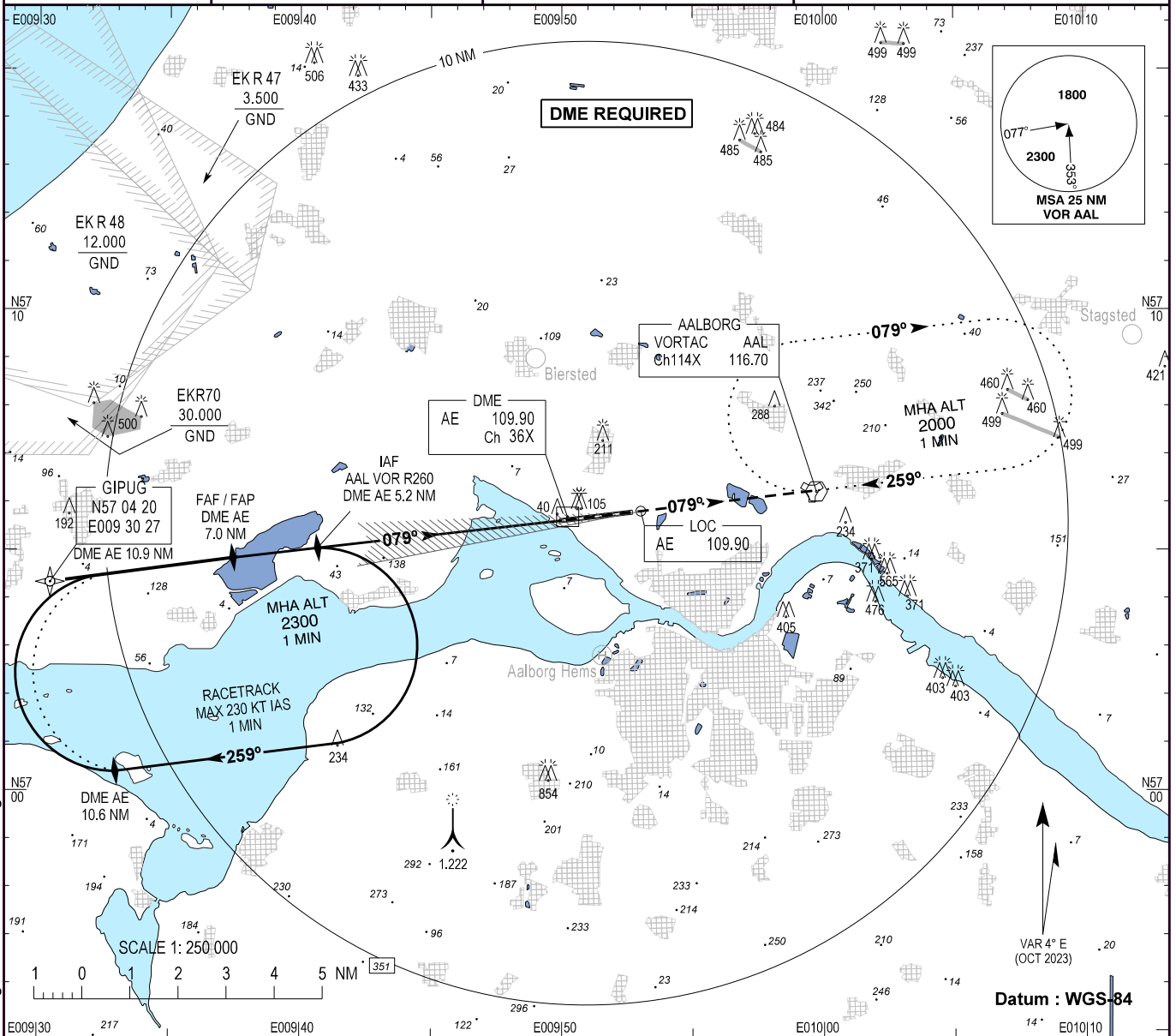
INSTRUMENT APPROACH CHART - ICAO

AD ELEV : 8

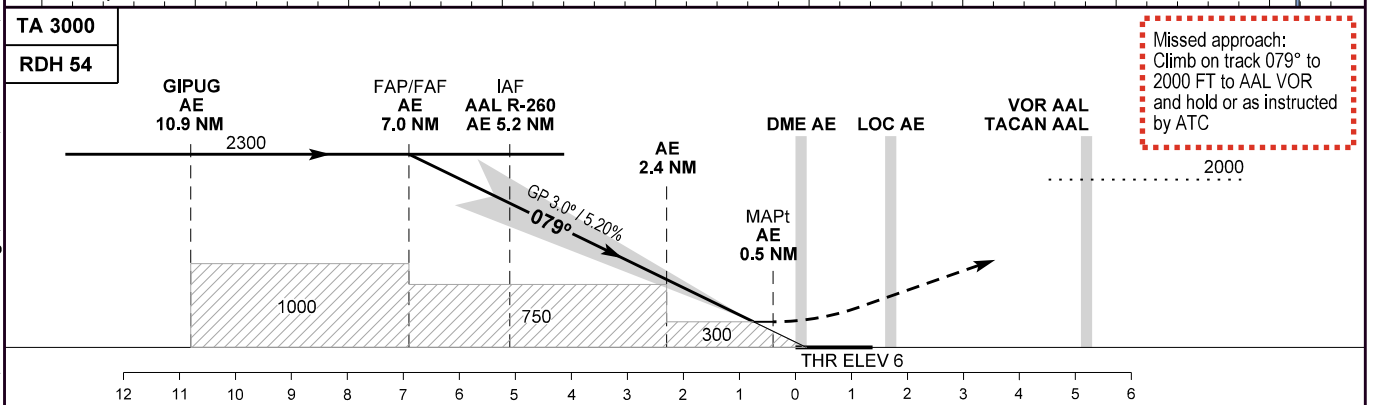
Bearings are magnetic
ELEV, ALT and HGT in FT

Aalborg APP : 123.980 362.450
Aalborg TWR: 118.305 353.525
257.800
ATIS : 120.480

**AD 2 - EKYT
ILS or LOC RWY 08L
Aalborg (CIV / MIL)**



Changes : VAR, MAG bearings, AD ELEV, THR ELEV, Circling CAT A and OCH changed.



OCA (H)	A	B	C	D	SPECIAL CONDITIONS
ILS / DME	151 (145)	161 (155)	170 (164)	181 (175)	
LOC / DME*	300 (290)	300 (290)	300 (290)	300 (290)	*Pass DME AE 2.4 NM not below 750
Circling	510 (500)**	510 (500)**	690 (680)**	760 (750)**	**North of AD only

DME AE	NM	6	5	4	3	2	1
DIST to THR	NM	5.9	4.9	3.9	2.9	1.9	0.9
ALT	FT	1930	1610	1290	970	650	330

GS	KT	70	80	90	100	110	120	130
Rate of descent	FT / MIN	370	430	480	530	580	640	690

NAVIAR

AIRAC AMDT 10/24 - 03 OCT 24

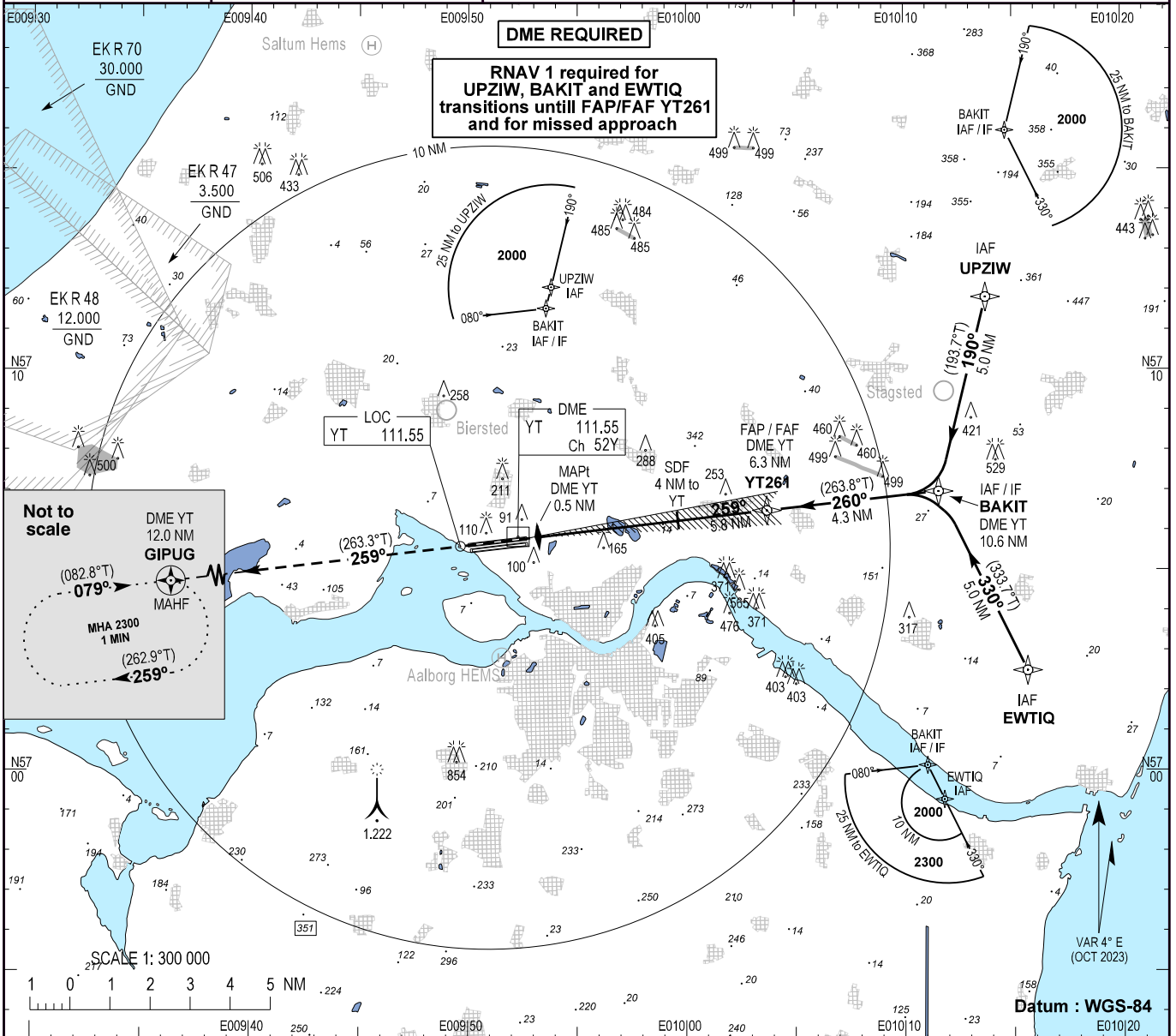
INSTRUMENT APPROACH CHART - ICAO

AD ELEV : 8

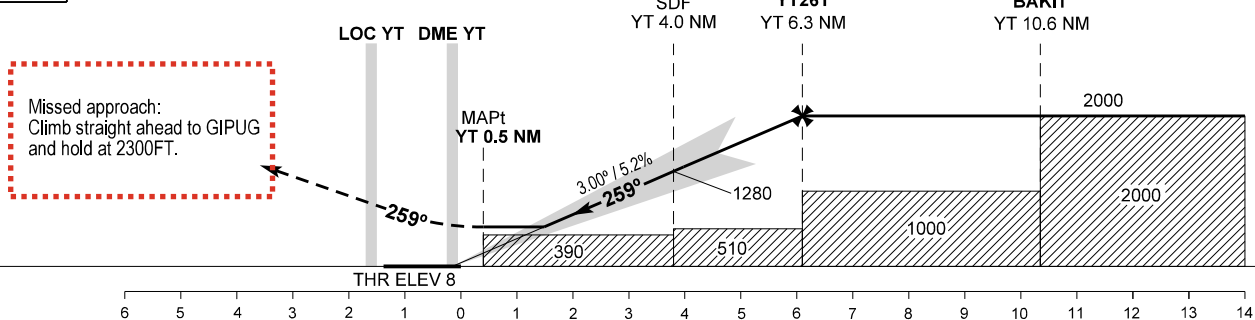
Bearings are magnetic (true)
ELEV, ALT and HGT in FT

Aalborg APP : 123.980 362.450
Aalborg TWR: 118.305 353.525
257.800
ATIS : 120.480

AD 2 - EKYT
ILS or LOC RWY 26R - 1
(CAT I + II + III)
Aalborg (CIV / MIL)



TA 3000
RDH 51



	A	B	C	D	SPECIAL CONDITIONS										
OCA (H)															
ILS CAT I	151 (143)	161 (153)	176 (168)	187 (179)											
ILS CAT II	62 (54)	74 (66)	87 (79)	102 (94)											
LOC	390 (380)	390 (380)	390 (380)	390 (380)											
Circling*	510 (500)*	510 (500)*	690 (680)*	750 (740)*	*North of AD only										
DME YT	NM	2	3	4	5	6									
Distance to THR	NM	1.8	2.8	3.8	4.8	5.8									
ALT		645	960	1280	1600	1920	GS	KT	70	80	90	100	110	120	130
							ROD	FT / MIN	370	430	480	530	580	640	690

Notes :
Timing not authorized for defining the MAPt.
Pass YT DME 4.0 NM not below 1000 FT.

Changes : New chart. Waypoints UPZIW and EWTIQ added.

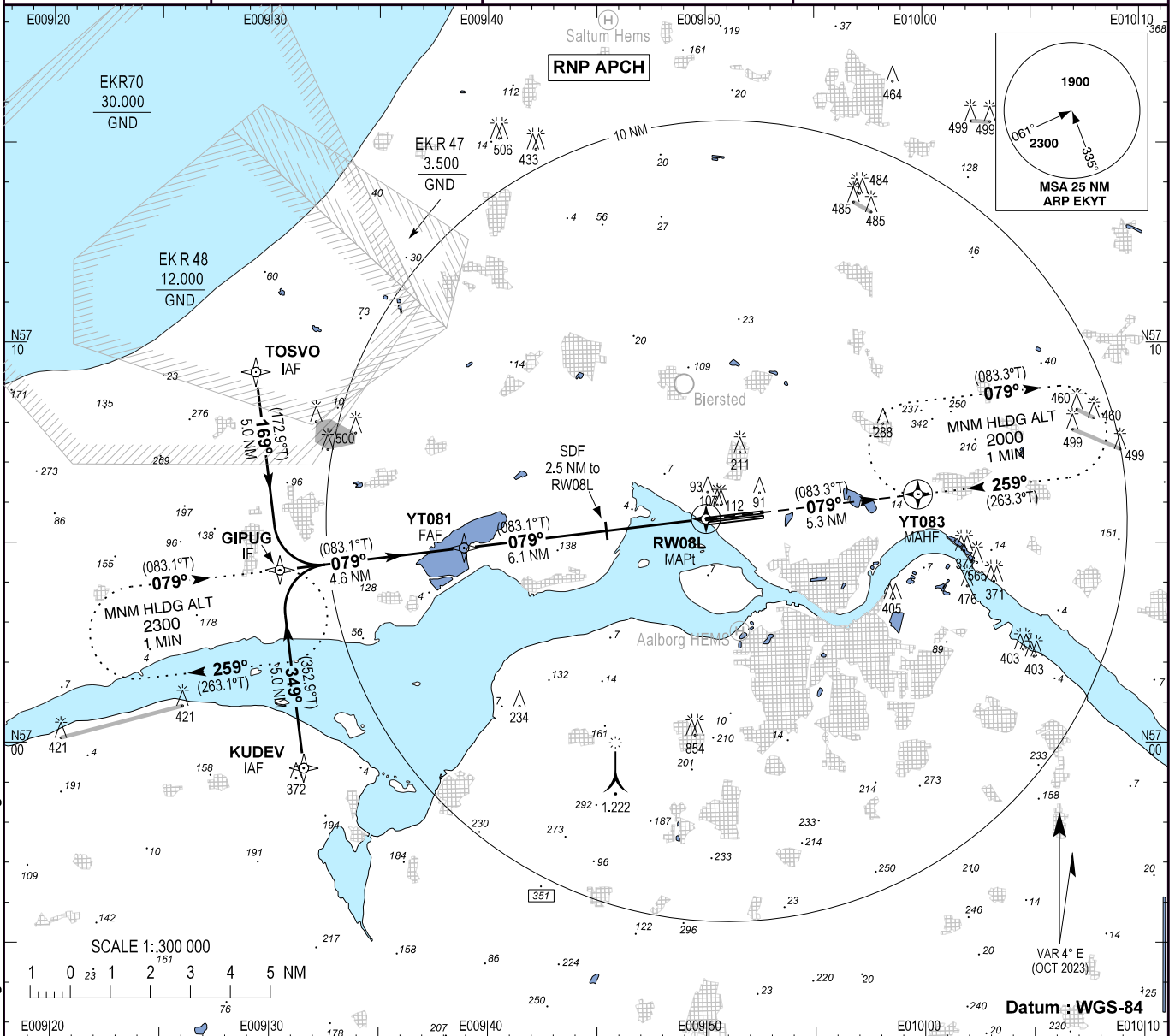
INSTRUMENT APPROACH CHART - ICAO

AD ELEV : 8

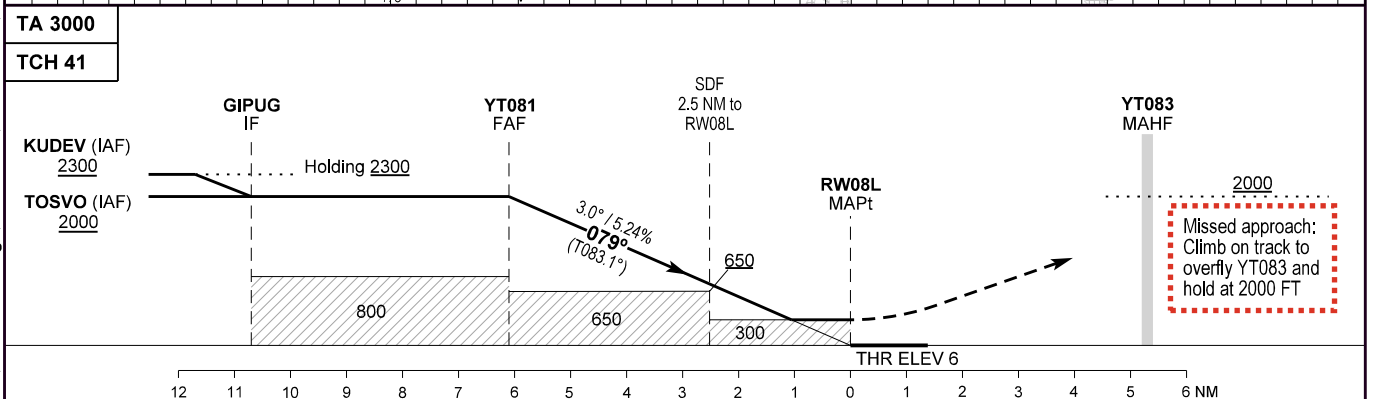
Bearings are magnetic (True)
ELEV, ALT and HGT in FT

Aalborg APP : 123.980 362.450
Aalborg TWR: 118.305 353.525
257.800
ATIS : 120.480

AD 2 - EKYT
RNP RWY 08L - 1
Aalborg (CIV / MIL)



Changes : VAR, MAG bearings, AD ELEV, THR ELEV, Circling CAT A and OCH changed.



OCA (H)	A	B	C	D
LNAV / VNAV*	223 (217)	236 (230)	253 (247)	273 (267)
LNAV**	300 (290)	310 (300)	330 (320)	350 (340)
Circling	510 (500)***	510 (500)***	690 (680)***	740 (730)***

Distance to RW08L	NM	6	5	4	3	2	1
Nominal altitude		1960	1650	1330	1010	690	370

SPECIAL CONDITIONS

- * Not to be used below -30°C
- ** Pass 2.5 NM before RW08L at MNM 650 FT
- *** N of RWY only

Note:
PAPI and RNP glidepath not coincident (PAPI TCH 50 FT, RNP TCH 41 FT)

INSTRUMENT APPROACH CHART - ICAO

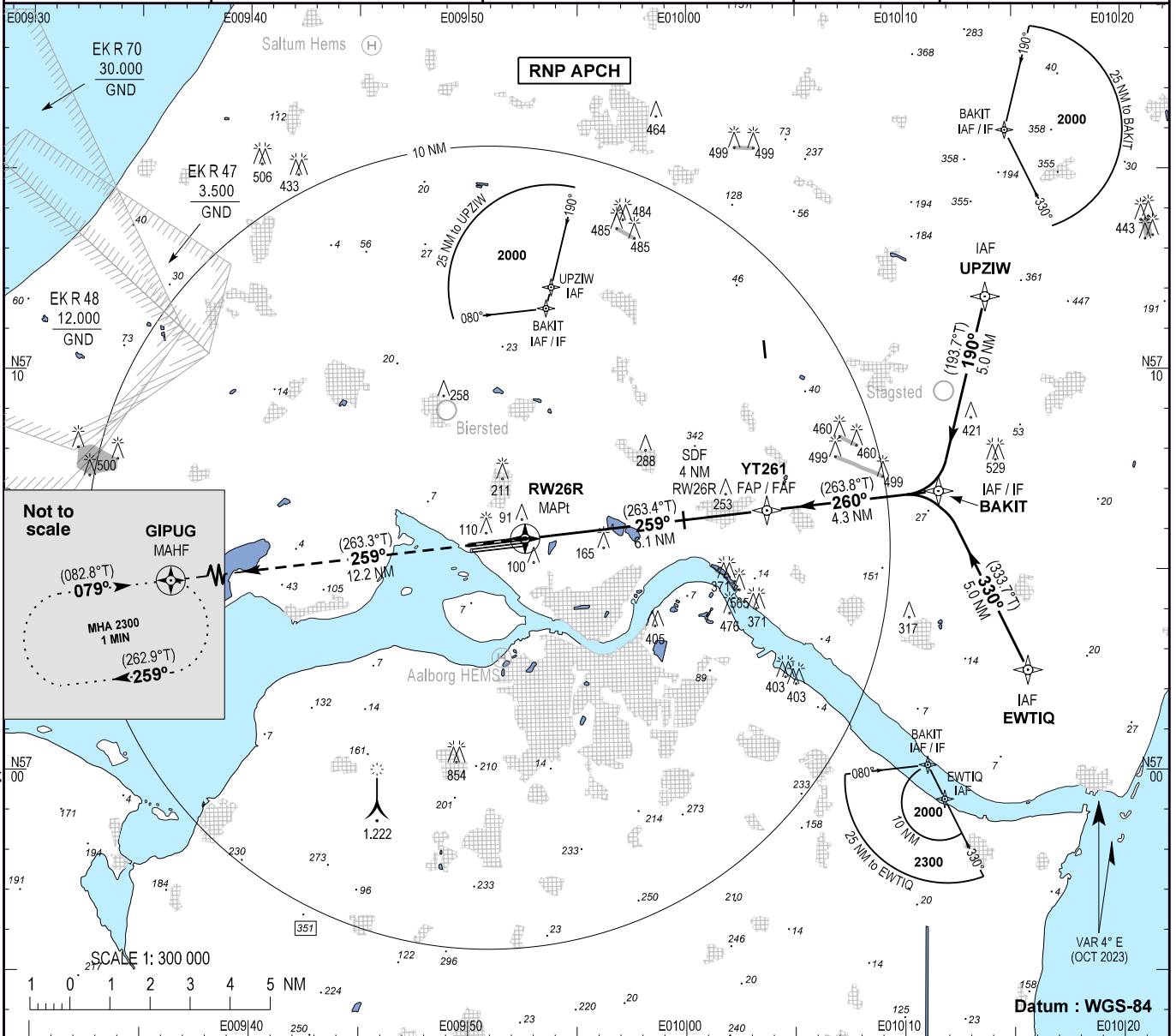
AD ELEV : 8

Bearings are magnetic (true)
ELEV, ALT and HGT in FT

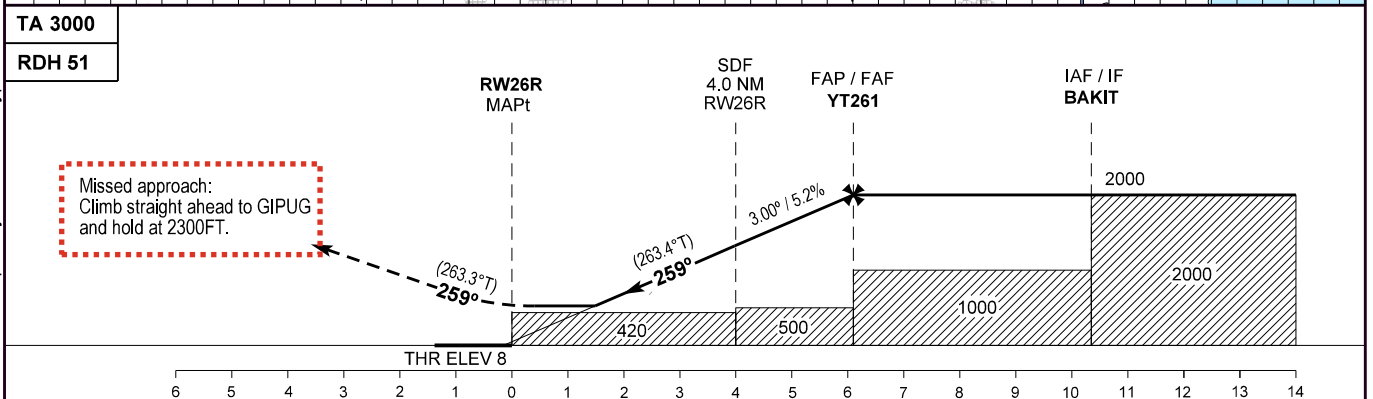
Aalborg APP : 123.980 362.450
Aalborg TWR: 118.305 353.525
257.800
ATIS : 120.480

EGNOS
CH : 95396
E26A

**AD 2 - EKYT
RNP RWY 26R - 1
Aalborg (CIV / MIL)**



Changes : Procedure completely revised. Waypoints OKPOT and VABUT withdrawn. Waypoints UPZIW and EWTIQ added.



OCA (H)	A	B	C	D
LPV	260 (250)	260 (250)	260 (250)	270 (260)
LNAV / VNAV	260 (250)	260 (250)	270 (260)	280 (270)
LNAV	420 (410)	420 (410)	420 (410)	420 (410)
Circling*	510 (500)*	510 (500)*	690 (680)*	750 (740)*

SPECIAL CONDITIONS		Notes :					
		Not to be used below -30°C or above +61°C.					
Distance to THR	NM	2	3	4	5	6	
ALT	FT	700	1015	1335	1655	1970	
GS	KT	70	80	90	100	110	
ROD	FT / MIN	370	430	480	530	580	

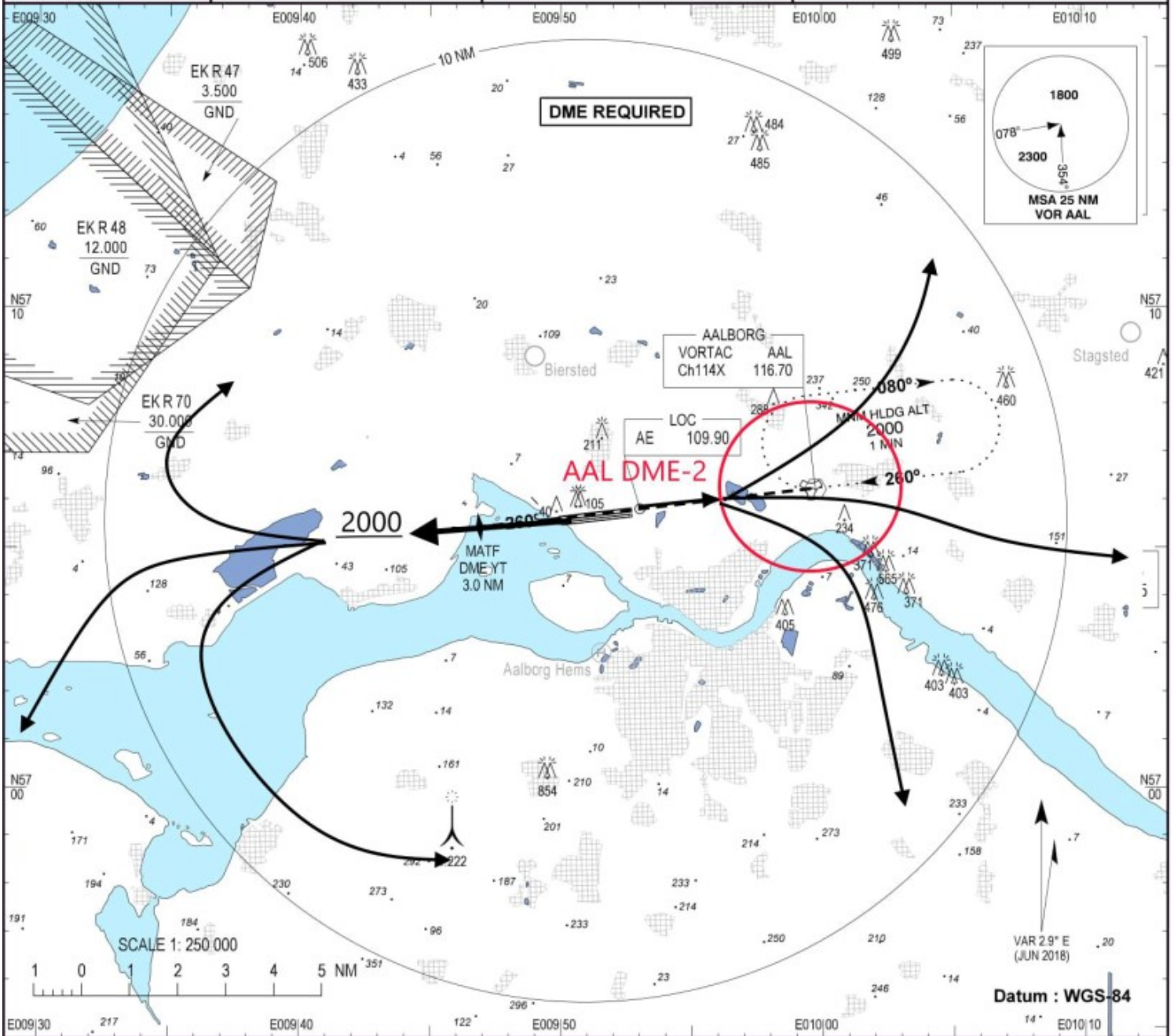
Departure Chart
EKYT - 08/26

AD ELEV : 10

Bearings are magnetic
ELEV, ALT and HGT in FT

Aalborg APP : 123.975 309.950
Aalborg TWR : 118.300 284.775
ATIS : 120.475

VATSIM
SCANDINAVIA



TA 3000

Departure Runway 26R/26L: Climb straight ahead until 2000' then commence the turn

Departure Runway 08R/08L: Climb straight ahead until AAL distance 2, then turn