
Sønderborg Airport (EKSB)



Charts

by VATSIM-Scandinavia

Elevation 24'	Transition Altitude 3000'	More Charts aim.naviair.dk	AFIS 126.400	ACC Copenhagen 136.485
<div style="border: 1px solid black; padding: 5px; display: inline-block;"> EKSB Quick Reference notes </div>				
Direct points Runway 14 →		← Runway 32 Direct points		
KELEP BUKAL - LONPA	RNP Approach	ILS CIM 111.15/317	LIBRI	

GENERAL

- One runway 32/14 used for TAKEOFF and LANDINGS. Runway 32 is preferred for landing
- Short and narrow runway (30 metres)
- UNCONTROLLED AIRSPACE! ATC only provides traffic and weather information.
- NO Landing, Takeoff, Taxi or Startup clearances supplied!

ARRIVAL

- No STARs available. Expect direct to points above, or visual approach
- No ILS approach for Runway 14. Expect RNP approach

PARKING

- No official parking spots. Park on the yellow line parallel to the terminal (Turboprop)
- For Jet aircrafts park on the spots next to the taxiways

DEPARTURE

- No SIDs. Expect direct to a fix or a radar vector after departure
- Clearance to destination on behalf of Copenhagen Control.
- At first contact ask for for "Weather information" and "Runway in use"
- NO startup clearance needed – Taxi information only

AERODROME CHART - ICAO

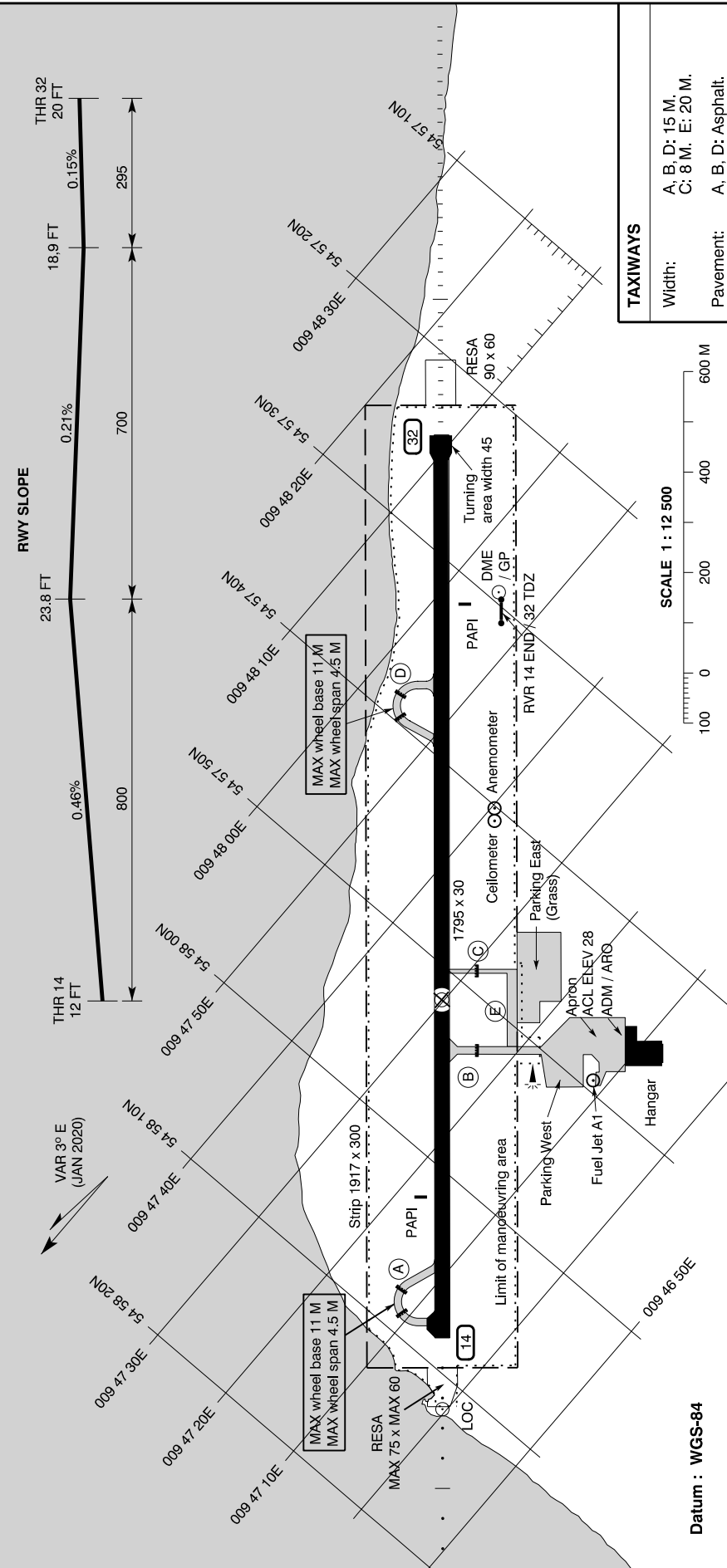
AD 2 - EKSB
ADC
Sønderborg

Changes : Description of TWY lighting corrected.

ARP : 54 57 51.72N 009 47 30.23E
On RWY, 673 M from THR 14

AD ELEV : 24 FT

Sønderborg Information : 126.400



ELEV in FT Dimensions / Distances in M		APCH and RWY LGT (Unless otherwise stated lighting is LIH adjustable)	
THR 14 12 FT	0.46%	PSN TWY	Declared distances
23.8 FT	0.21%	TORA	1795
18.9 FT	0.15%	TODA	1795
THR 32 20 FT		ASDA	1795
295		LDA	1795
700		APCH	420 M White
800		THR	Green
		PAPI	3°
		Edge	1795 M White 60 M
		End	Red
		THR	Green
		PAPI	3°
		Edge	1795 M White 60M
		End	Red

TAXIWAYS	
Width:	A, B, D: 15 M. C: 8 M; E: 20 M.
Pavement:	A, B, D: Asphalt. C, E: Grass.
Strength:	A, B, D: PCN 40 / F / A / W / T.
Day marking:	A, B, D: Centre line Holding position. C, E: Edge.
Lighting:	A, D: Blue edge LIL. RGL. B: Blue edge LIL. RGL.
TWY C, E:	For use by day only.
APRON	
Pavement:	Asphalt
Strength:	PCN 40 / F / A / W / T

RUNWAYS		OTHER : Secondary power supply : Yes, switch-over time MAX 15 SEC	
NR	Direction	THR PSN	Day marking
14	139.4° GEO 136.4° MAG	54 58 08.23N 009 47 05.60E	THR RWY NR TDZ RWY 32 Centre line
32	319.4° GEO 316.4° MAG	54 57 24.14N 009 48 11.37E	
Pavement Strength		Declared distances	
Asphalt PCN 40 F / A / W / T		PSN TWY	Declared distances
		TORA	1795
		TODA	1795
		ASDA	1795
		LDA	1795
		APCH	420 M White
		THR	Green
		PAPI	3°
		Edge	1795 M White 60 M
		End	Red

Datum : WGS-84

SCALE 1 : 12 500

**INSTRUMENT
APPROACH
CHART - ICAO**

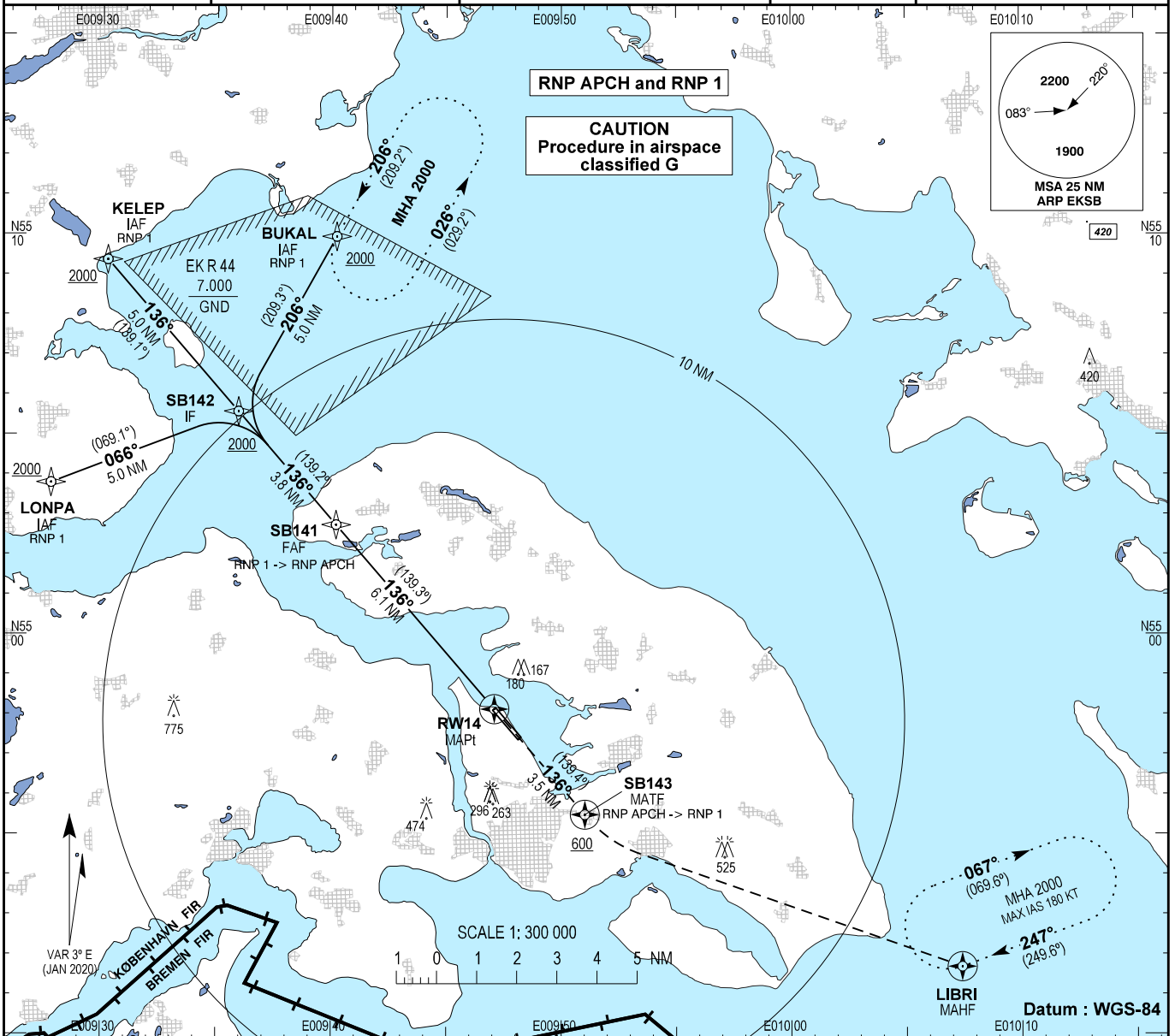
AD ELEV : 24

Bearings are magnetic (true)
ELEV, ALT and HGT in FT

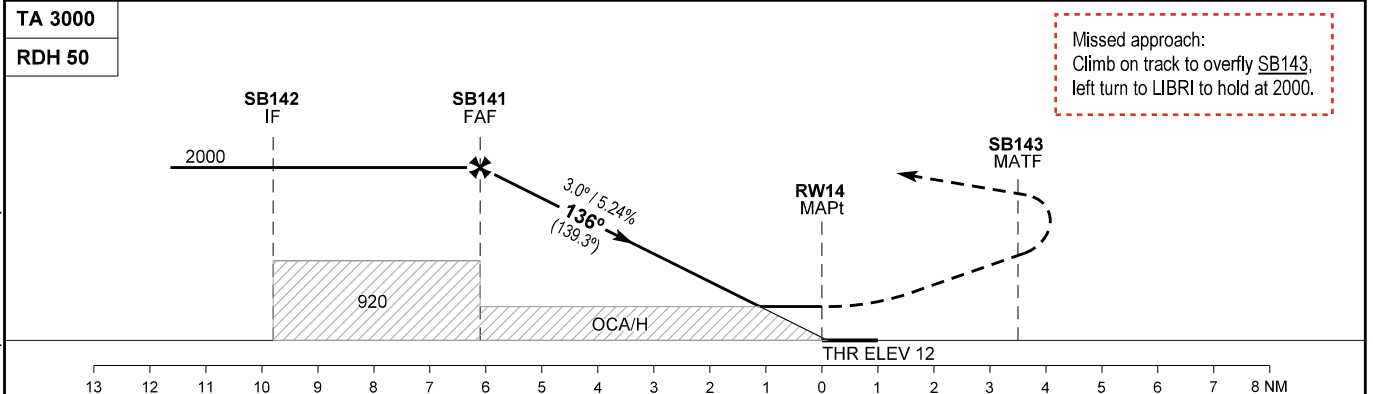
Sønderborg Information : 126.400

EGNOS :
CH 46181
E14A

**AD 2 - EKSB
RNP RWY 14 - 1
Sønderborg**



Changes : "GPS qualification required" note withdrawn.



OCA (H)	A	B	C	SPECIAL CONDITIONS
LPV	151 (139)	157 (145)	167 (155)	
VNAV*	220 (210)	230 (220)	240 (230)	*Not to be used below -20°C.
LNAV	300 (290)	300 (290)	310 (300)	
Circling**	480 (460)	750 (730)	930 (910)	**Circling E of AD only.

Time to THR 14 from FAF/FAP - DIST 6.1 NM ***							
GS	KT	60	80	100	120	140	160
Time	MIN : SEC	6:05	4:34	3:39	3:03	2:36	2:17
Rate of descent	FT / MIN	319	425	530	637	743	849

*** Timing not authorized for defining the MAPt

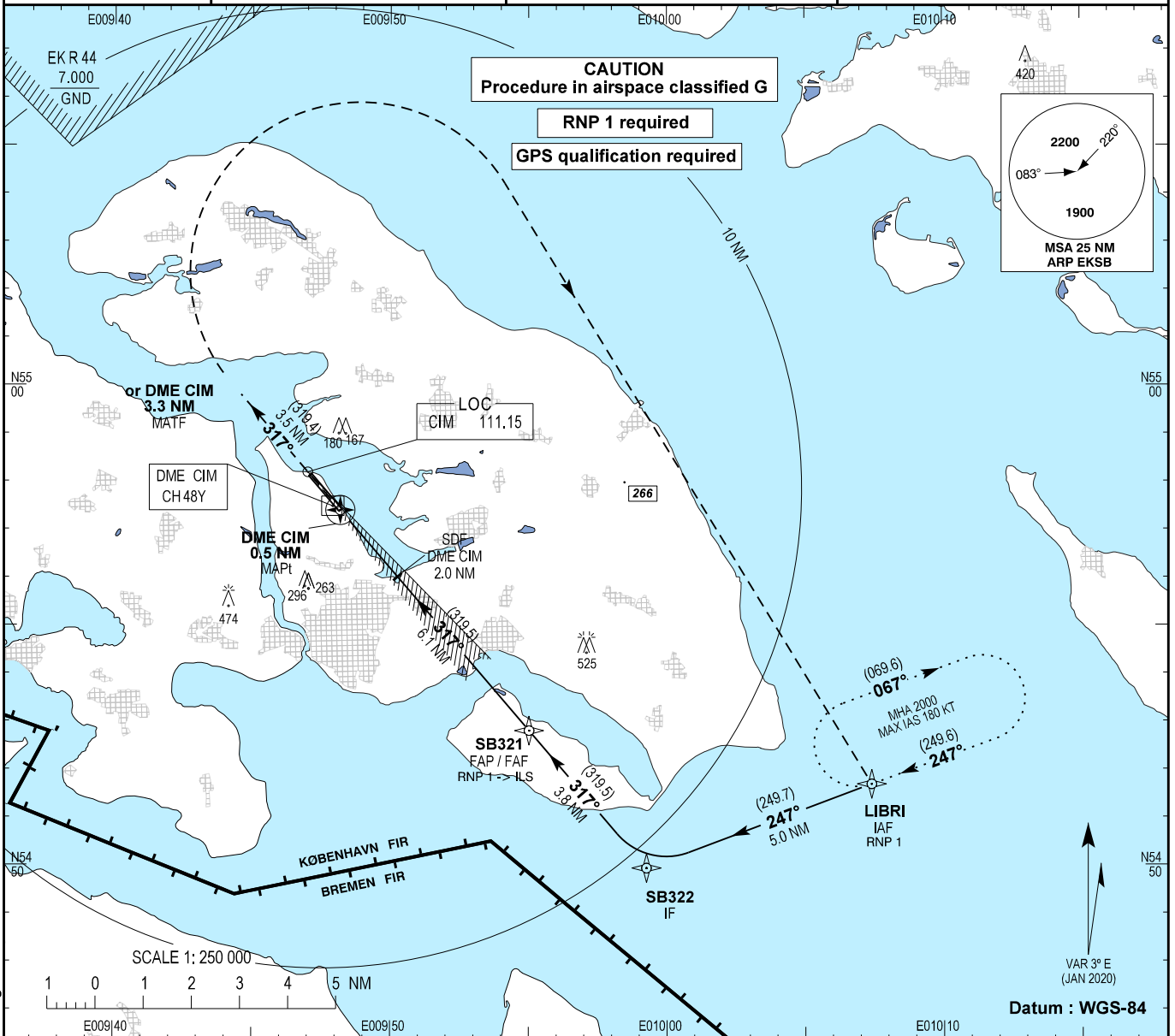
INSTRUMENT APPROACH CHART - ICAO

AD ELEV : 24

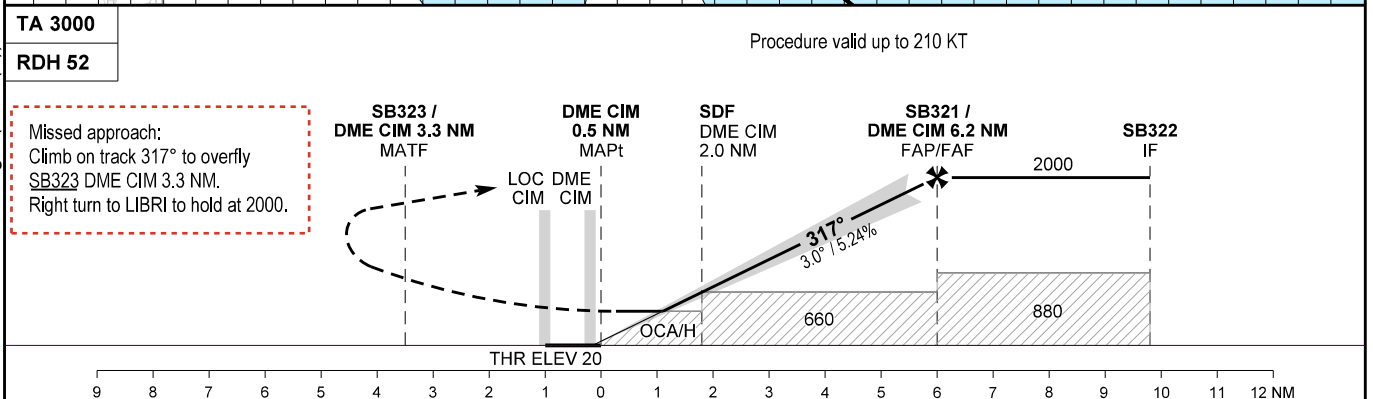
Bearings are magnetic (true)
ELEV, ALT and HGT in FT

Sønderborg Information : 126.400

AD 2 - EKSB
ILS or LOC RWY 32
Sønderborg



Changes : THR ELEV and in table height (OCA (H)) ILS changed.



OCA (H)	A	B	C	SPECIAL CONDITIONS
ILS	160 (140)	166 (146)	176 (156)	
LOC*	350 (330)	350 (330)	350 (330)	* Pass DME CIM 2.0 NM not below 660
Circling**	480 (460)	750 (730)	930 (910)	** Circling NE of AD only

		Time to MAPt from FAF - DIST 5.7 NM***											
DME CIM	NM	1	2	3	4	GS	KT	60	80	100	120	140	160
DME CIM	NM	1	2	3	4	GS	KT	60	80	100	120	140	160
DIST to THR	NM	0.8	1.8	2.8	3.8	Time	MIN : SEC	05:42	04:16	03:25	02:51	02:27	02:08
Nominal ALT		340	660	980	1300	Rate of descent	FT / MIN	319	425	530	637	743	849

*** Timing not authorized for defining the MAPt

INSTRUMENT APPROACH CHART - ICAO

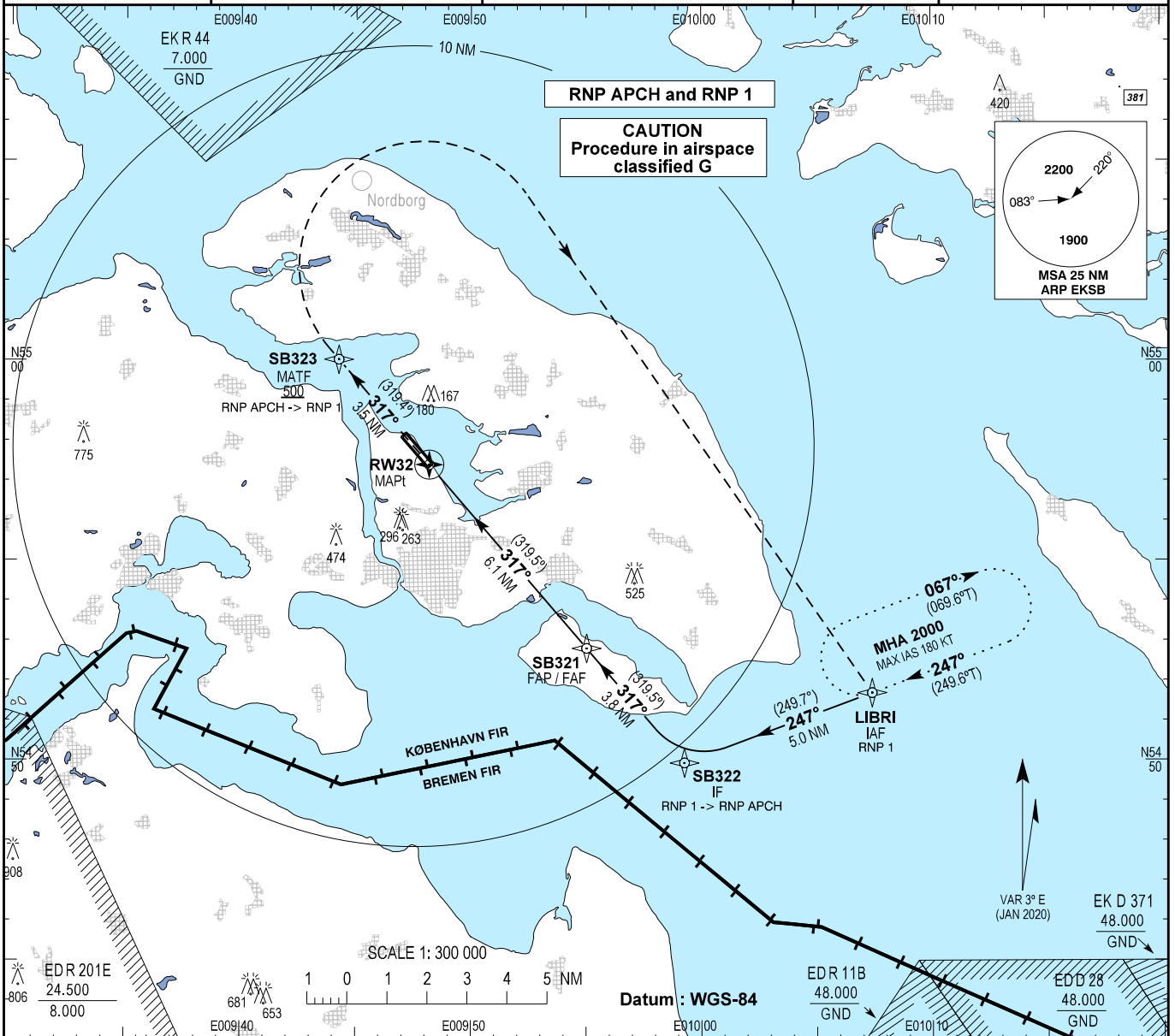
AD ELEV : 24

Bearings are magnetic (true)
ELEV, ALT and HGT in FT

Sønderborg Information : 126.400

EGNOS :
CH 48475
E32A

AD 2 - EKSB
RNP RWY 32 - 1
Sønderborg

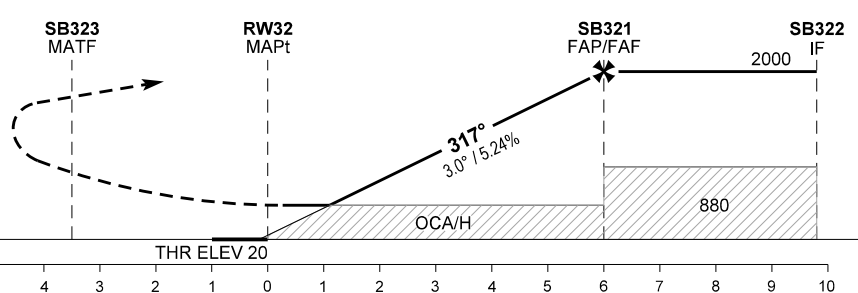


Changes : "GPS qualification required" note withdrawn.

TA 3000
RDH 50

Missed approach:
Climb on track to overfly SB323,
right turn to LIBRI to hold at 2000.

Procedure valid for up to 210 KT.



OCA (H)	A	B	C	SPECIAL CONDITIONS	
LPV	160 (140)	166 (146)	176 (156)		
LNAV / VNAV*	230 (210)	240 (220)	250 (230)	*Not to be used below -20°C.	
LNAV	350 (330)	350 (330)	350 (330)		
Circling**	480 (460)	750 (730)	930 (910)	**Circling NE of AD only.	
DIST to THR 32	NM 5.0	4.0	3.0	2.0	1.0
Nominal altitude	1680	1360	1040	715	390

Time to THR 32 from FAF/FAF - DIST 6.1 NM ***							
GS	KT	60	80	100	120	140	160
Time	MIN : SEC	6:04	4:33	3:38	3:02	2:36	2:16
Rate of descent	FT / MIN	319	425	530	637	743	849

*** Timing not authorized for defining the MAPt

AIP DENMARK

1. Aerodrome Location Indicator and Name:**EKSB - Sønderborg****2. Aerodrome Geographical and Administrative Data**

1. ARP PSN and site at AD:	54 57 51.72N 009 47 30.23E On RWY, 673 M from THR 14	5. AD ADM: AD address:	Sønderborg Lufthavn Lufthavnsvej 1 DK - 6400 Sønderborg
2. Distance and direction from city:	3 NM N of Sønderborg	TEL:	+45 74 42 21 30 (airport) +45 73 42 21 70 (AFIS) TEL are only manned during AD opening hours
3. ELEV: REF temperature:	24 FT 22°C	FAX:	NIL
4. MAG VAR: Annual change:	3° E (JAN 2020) Increasing 9'	E-mail: AFS:	handling@eksb.dk EKSB
		6. Types of traffic permitted:	IFR/VFR

7. Remarks: NIL

3. Operational Hours

1. AD:	MON-FRI: 0600-2145 (0500-2045) SAT: 0630-1600 (0530-1500) SUN: 1400-1915 (1300-1815) Other times PPR - submitted not later than 1 hour before closing time.	4. AIS Briefing Office:	As AD
2. Customs and immigration:	The airport is open for traffic to/from all States. Hours for customs clearance and immigration as for AD. PN 1 HR.	5. ATS Reporting Office (ARO):	As AD
3. Health and sanitation:	NIL	6. MET Briefing Office:	As AD
		7. ATS:	As AD
		8. Fuelling:	As AD
		9. Handling:	As AD
		10. Security:	As AD
		11. De-icing:	as AD

12. Remarks: Self briefing is available in the terminal building

4. Handling Services and Facilities

1. Cargo-handling facilities:	Yes	4. De-icing facilities:	Yes, from 01 NOV to 30 APR.
2. Fuel and oil types:	Fuel: Jet A1 Oil: No	5. Hangar space for visiting aircraft:	No
3. Fuelling facilities and capacity:	Jet A1: 300 L/MIN	6. Repair facilities for visiting aircraft:	Minor repairs only

7. Remarks: Limitations to payment options for fuel: JET A1 requires valid DCC & Shell Aviation Denmark contract or Shell Carnet/Fuel & Fly card. Credit card/Debit card and cash are no longer accepted as payment options.

5. Passenger Facilities

1. Hotels:	Hotels in town	5. Bank and Post Office:	In Sønderborg
2. Restaurants:	No	6. Tourist Office:	In Sønderborg TEL +45 74 42 35 55 FAX +45 74 42 57 47
3. Transportation:	Taxi and bus		
4. Medical facilities:	Hospital in Sønderborg		

7. Remarks: NIL

6. Rescue and Fire Fighting Services

1. AD category for fire fighting:	CAT 3 available for all flights. CAT 5 and 1 boat (raft capacity 60 pers.) available for scheduled flights. Other flights than scheduled flights CAT 5 PPR 2 hours. CAT 6 and 1 boat (raft capacity 60 pers.) only available on request. CAT 7 and 2 boats (raft capacity 300 pers.) only available on request.	2. Rescue equipment:	1 response vehicle 2 crashtenders 1 boat (+1 additional boat CAT 7)
		3. Capability for removal of disabled aircraft:	None. EKSB can assist owners of disabled aircraft or authorities in hiring equipment or services to remove such aircraft.

4. Remarks: Extinguishing agents:
CAT 1-5 water 7480 L, Foam (B) 600 L, Powder 250 KG.
CAT 6-7 water 15480 L, Foam (B) 1600 L, Powder 274 KG.**7. Seasonal Availability - Clearing**

1. Type of clearing equipment:	Mechanical snow clearing with snowplough and sweeper. Chemicals: KFOR, NAFO and UREA	2. Clearance priorities:	1. RWY in use 2. Taxiways 3. Apron
--------------------------------	---	--------------------------	--

3. Remarks: Information on snow clearance published from November to April in SNOWTAM. See also Snow Plan in AD 1.2.

8. Aprons, Taxiways and Check Locations Data

1. Apron surface and strength:	Asphalt, PCN 40/F/A/W/T	3. ACL and ELEV:	At apron 28 FT
Taxiway width surface and strength:	TWY A, B, D: 15 M, asphalt, PCN 40/F/A/W/T TWY C: 8 M, grass TWY E: 20 M, grass	4. VOR checkpoints: INS checkpoints:	- See Aerodrome Chart

5. Remarks: NIL

9. Surface Movement Guidance and Control System and Markings

1. Aircraft stand ID signs, Taxi guide lines, Visual docking/parking guidance system:	-	2. RWY and TWY markings:	RWY 14/32: THR, RWY NR, TDZ RWY 32, centre line TWY A, B, D: Centre line, holding position TWY C, E: Edge
		3. Stop bars:	-

4. Remarks: TWY C and E: For use day only.

10. Aerodrome Obstacles

Obstacles for Area 2 and 3 are not provided

Obstacles penetrating obstacle limiting surfaces

OBST ID / Designation	OBST type	OBST position	ELEV (FT)	HGT AGL (FT)	Markings / Type, Colour	Remarks
SB009	Windturbine	54 59 00.2N 009 48 07.8E	180	141	-	-
SB013	Chimney	54 55 49.0N 009 46 54.7E	296	52	LIL F R	-
SB018	Chimney	54 55 45.9N 009 47 02.4E	263	211	LIL F R	-

Obstacles penetrating take-off flight path area obstacle identification surface

OBST type	OBST position	ELEV (FT)	HGT AGL (FT)	Markings / Type, Colour	Remarks
NIL					

Obstacles assessed as being hazardous to air navigation

OBST type	OBST position	ELEV (FT)	HGT AGL (FT)	Markings / Type, Colour	Remarks	
SB010	Windturbine	54 58 59.9N 009 48 23.1E	167	141	-	-

11. Meteorological Information Provided

1. Associated MET Office:	Danish Meteorological Institute (DMI)/ Civil Weather Forecasts and Warnings (CVV) TEL +45 39 15 72 72	6. Flight documentation: Language(s) used:	Charts. Abbreviated plain language texts English and Danish
2. Hours of service: Outside Hours:	H24	7. Charts and other information available:	Surface analysis (current chart) Prognostic upper air chart Significant weather chart
3. Office responsible for TAF preparation: Periods of validity:	Danish Meteorological Institute (DMI) Civil Weather Forecasts and Warnings (CVV) 9 hours	8. Supplementary equipment available:	-
4. Type of landing forecast: Interval of issuance:	NIL	9. ATS units provided with information:	-
5. Briefing/Consultation provided:	Self briefing (northavimet.com) and telephone consultation	10. Additional information (limitation of service, etc.):	-

AIP DENMARK

12. Runway Physical Characteristics

RWY	Direction	RWY dimensions	Strength (PCN), Surface of RWY and SWY (SFC friction Calibration NR)	THR PSN	THR ELEV/ Highest ELEV of TDZ of precision APCH RWY
14	139.4° GEO 136.4° MAG	1795 x 30 M	PCN 40/F/A/W/T Asphalt	54 58 08.23N 009 47 05.60E	12 FT/-
32	319.4° GEO 316.4° MAG	1795 x 30 M	PCN 40/F/A/W/T Asphalt	54 57 24.14N 009 48 11.37E	20.4 FT/-
RWY	RWY-SWY slope	SWY dimensions	CWY dimensions	Strip dimensions	Obstacle-free zone
14	0.15%	-	-	1917 x 300 M	-
32	0.15%	-	-	1917 x 300 M	-

Remarks: Runway classification

RWY NR	RUNWAY CODE	TYPE
14	3C	NONP
32	3C	PA-1

13. Declared Distances

RWY	TORA	TODA	ASDA	LDA	Remarks
<u>RWY 14</u>	1795 M	1795 M	1795 M	1795 M	-
<u>RWY 32</u>	1795 M	1795 M	1795 M	1795 M	-

14. Approach and Runway Lighting

RWY	APCH LGT: Type Length Intensity	THR LGT: Colour WBAR	PAPI: Angle MEHT	TDZ LGT Length	RWY centre line LGT: Length Spacing Colour Intensity	RWY edge LGT: Length Spacing Colour Intensity	RWY end LGT: Colour WBAR	SWY LGT: Length Colour
14	420 M White LIH	Green	3°	-	-	1797 M 60 M White LIH	Red	-
32	900 M White LIH	Green	3°	-	-	1797 M 60 M White LIH	Red	-

Remarks: NIL

15. Other Lighting and Secondary Power Supply

- | | |
|---|---|
| <p>1. ABN/IBN location, characteristics and hours of operation: -</p> <p>2. LDI location and LGT: -</p> <p>Anemometer location and LGT: -</p> | <p>3. TWY edge and centre line LGT: Blue edge LIL on TWY A, TWY B, TWY D. RGL at holding position TWY B</p> <p>4. Secondary power supply/switch-over time: Yes, switch-over time MAX 15 SEC</p> |
|---|---|
5. Remarks: Blue edge LGT at turning area THR 32

16. Helicopter Landing Area

NIL

17. ATS Airspace

- | | |
|--|--|
| <p>1. Designation and lateral limits: SØNDERBORG FIZ/RMZ
54 51 21N 009 52 18E - 55 01 29N 009 37 07E -
55 03 46N 009 48 02E - 54 55 22N 010 00 26E -
54 51 21N 009 52 18E</p> <p>2. Vertical limits: 3500 FT MSL/GND</p> | <p>3. Airspace classification: G</p> <p>4. ATS unit call sign: SØNDERBORG INFORMATION
Language(s): EN, DA</p> <p>5. Transition altitude: 3000 FT MSL</p> |
|--|--|
6. Remarks: Designated as Radio Mandatory Zone REF ENR 1.4 item 3.

18. ATS Communication Facilities

Service	CS	Channels/ Frequencies	HR	Remarks
AFIS	SØNDERBORG INFORMATION SØNDERBORG INFORMATION	126.400 121.500	As AD	DOC: FL 100/40 NM Emergency Radar track from radar 5

19. Radio Navigation and Landing Aids

FAC ILS CAT VAR	ID	Channel/ Frequency	HR	PSN	DME ELEV	Remarks
LOC 32 CAT I GP 32	CIM	111.150 MHZ 331.550 MHZ	H24 H24	54 58 11.72N 009 47 00.39E 54 57 29.18N 009 47 54.97E		ILS class I/D/4 Angle 3°, RDH 52 FT
DME 32	CIM	CH 48y	H24	54 57 29.39N 009 47 55.03E		FREQ paired with LOC Collocated with GP

20. Local Aerodrome Regulations

1. PPR for certain operations.

- 1.1 PPR for sightseeing flights daily 1900-0700 Danish time.
- 1.2 PPR for acrobatic flights, UL-flights and parachute dropping flights in the period FRI 1900 - MON 0700 Danish time and daily 1900-0700 in the period MON 1900 - FRI 0700 Danish time.
- 1.3 Traffic circuits NE of RWY 14/32 only.

- 1.4 With reference to the general rules of the air in the vicinity of an aerodrome, aircraft may, subject to the Local Aerodrome Regulations specified in AIP Denmark, AD 2 section, item 20, pt. 1.3, execute right turns when approaching for landing and after taking off, if it does not endanger other air traffic and provided that the pilot reports his/her intentions to the AFIS-unit before a right turn is initiated or, when departing, before take-off.
- 1.5 Parachuting may take place

21. Noise Abatement Procedures

1. General Provisions

- 1.1 Overflying the built-up areas Sønderborg and Kær during TKOF and LDG should be avoided as far as possible.

2. Jet aircraft

- 2.1 PPR for take-off with jet aeroplanes in the period 2200-0700 Danish time. Permission to be obtained from the Airport Office.

22. Flight Procedures

1. IFR Arrival

- 1.1 Aircraft will normally be cleared by ACC KØBENHAVN to LIBRI HOLDING.
- 1.2 Radio communication failure
FIX designated for radio communication failure during IMC for arriving aircraft is LIBRI.

2. IFR Departure

- 2.1 Standard Instrument Departures
Standard Instrument Departures (SID) have not been established.
- 2.2 Omnidirectional departures
RWY 14/32: Climb straight ahead to at least 500 FT MSL before turn is commenced.

3. Primary Holding for Sønderborg

HOLDING NAME FACILITY OR FIX	INBOUND TRACK (MAG)	TURN	MAX IAS (KT)	MNM/MAX LEVEL TIME	ENTRY PROCEDURE
LIBRI 54 51 41.63N 010 07 24.19E	247	RIGHT	180	2000 FT MSL/3000 FT MSL 1 MIN	OMNI-DIRECTIONAL

4. VFR Flights

- 4.1 VFR reporting points, VFR routes and VFR holdings are established, see ANC 1:500 000 - Denmark.
- 4.2 Traffic circuits NE of RWY only.

23. Additional Information

NIL

24. Charts Related to the Aerodrome

Chart type	Chart title
Aerodrome Chart - ICAO	ADC
Instrument Approach Chart - ICAO	RNP RWY 14 - 1 RNP RWY 14 - 2 ILS or LOC RWY 32 RNP RWY 32 - 1 RNP RWY 32 - 2