

# EKAH - Aarhus

## Available stands

---

### Overview

---

Aarhus, or Tirstrup, Airport is the fourth largest in Denmark. Originally built in 1943 by the German Luftwaffe. The 3 boarding communes were built in 1968 the first terminal building and SAS then started their routes to EKCH and a few charter flights. In 2000 the airport became a Limited Company with the nearby laying 6 communes with the main sharehold. In 2017 EU granted money for the expansion, which still is in progress.

**ALWAYS remember, if you are unsure or in doubt then ask. We will always do our best to help you out!**

### Use of stands

---

In Aarhus, there are 4 normal parking spots.

Stand	Destination	Aircraft type
1 - 3	Schengen incl. domestic	PAX
4	Non Schengen incl. UK	
4	Any Destination	Heavy PAX aircraft
15 - 16	VFR, VIP & Misc.	Smaller Aircrafts
38 - 39	Any	VFR

## IFR clearance

---

Initial contact is with Tower, reporting callsign, stand number, and latest ATIS identification letter.

Remember to read/listen to the entire ATIS as there might be some specific info related to you!

IRL, IFR Clearance is given on the taxi to the RWY. It is up to you whether you want to simulate this or not.

As there are no SIDs in Aarhus your departure clearance will sound like this:

*“Cleared to Destination via [Point]/[Flightplan route], FL060, expect level change, squawk 1234, After departure left/right turn to POINT”*

## Push-back

---

All stands are self manouvering, if push is needed it can be requested from ATC.

**IRL startup is at the pilot's discretion, However on Vatsim, it is up to the individual controller to simulate this or not.**

## Taxi

---

Runway 28R/10L is not used on Vatsim, hence you can expect to use this runway as a taxiway.

## Runways

---

In Aarhus, there are 2 runways. Whereas RWY 10R/28L is the primary. RWY 28L have ILS CATII and 10R have ILS.

Runway 28R/10L is not to be used.

## SIDs

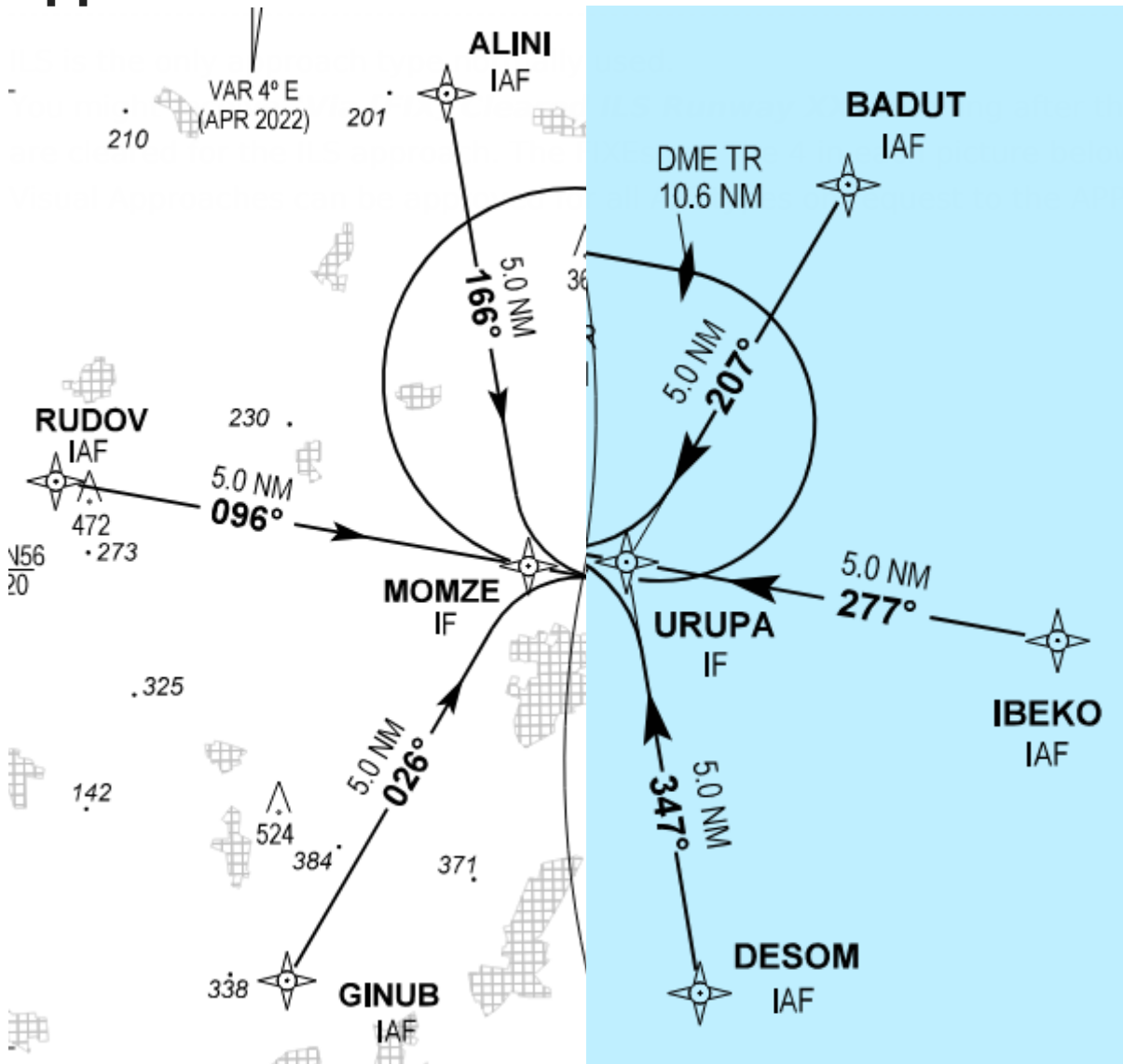
---

There are no SIDs in Aarhus, hence you will always be cleared via a WP. For flights bound for EKRR/EKCH, this will be either TESPI or TNO.

# STARs

There are no STAR's in Aarhus.  
Expect direct to ILS fix or Vectors.

## Approach



at FIX you  
/.  
controller.

## Direct routings

If traffic permits you might receive directs from both EKDK\_CTR and APP.  
The fixes normally given are the ones listed above.

Revision #4

Created 23 April 2024 22:59:28 by Jeppe Seier (1602589)

Updated 29 August 2024 17:23:41 by Thomas Broegger (1447687)