

# All RIU - All ACCs

## EKDK\_CTR (136.485)

1. Make sure you are familiar with the airspace divide
2. Help D/E with managing Inbounds. And especially holdings
3. Help B/I by taking flights from EDYY aspr. Hold Contingency
4. You control All regional airports (Except EKOD & EKSB)
5. You are the coordinator with the overview and the guy with the big picture.  
Help!
6. Review HOLDING CONTINGENCY. Be ready to help other ACCs!

## Arrivals

Only Give the expected STAR!

Arrival	Descend to	Next SCT
TESPI (all runways)	FL250	EKDK_D_CTR (133.155)
TUDLO (all runways)	FL290	EKDK_D_CTR (133.155)

NOTE\* MONAK arrivals do NOT come to you, but directly to EKDK\_B\_CTR from EDWW\_B

## Regional Airports inbounds

Coordinate with local ATC. If local ATC is online descend to as prescribed.

Destination	Descend to	Directs available
EKYT	FL130	BAKIT(26R)/GIPUG(08L)/AAL

EKBI	FL130	GELBA/LOKSA (Final) GIVNA/UVINA (south) EPARA/ODNEV (north-base)
EKAH	FL70	URUPA(28L) MOMZE(10R) TL
EKKA	FL130	EBISO(09R from CH) (south base) RIKSU(27L from CH) (final)
EKSB	N/A (FL70 if from the West, 290 if from east)	LIBRI (32) / VIBEN (14) Propose direct to EKDK_D.
EKSP	FL70	DINUT(28R) / TISET (08L) / VO

## EKDK\_D\_CTR (133.155) or EKDK\_E\_CTR (123.730)

- **Do not send airplanes into APP airspace on anything other than the cleared STAR with the required separation (specified below) unless specifically coordinated with EKCH\_W\_APP**
- You need to CLOSELY adhere to [ACC LAI3 point 2.4.4](#)
- APP may ask you for other kinds of separation
- Keep an eye on ERNOV arrivals to ensure W\_APP is not getting overloaded.
- You control EKOD.
- Arrivals into EKSB shall be cleared appropriately

## Arrivals

Arrival	Minimum separation	Next SCT	XFL
TESPI	<b>15 nm</b> (20 nm if other STARs are busy) <a href="#">ACC LAI3 point 2.4.4</a>	EKCH_W_APP (119.805)	FL130
TUDLO		EKCH_W_APP (119.805)	FL120
EKBI (09+27)	10nm	EKDK_CTR / EKBI_APP	FL130

EKSB (RIU 32)	EKDK_S_CTR/EKSP_APP/ EKSB_I_TWR	3500'
EKSB (RIU 14)	EKDK S CTR/EKSP APP	FI 70



Holding	Crs.	Turn
ROSBI	103	LEFT
LUGAS	073	LEFT

## Departures

SID	Climb to	Next ACC
GOLGA	FL240	EKDK_CTR (136.485)
ODN	FL280	EKDK_CTR (136.485)

## EKDK\_B\_CTR

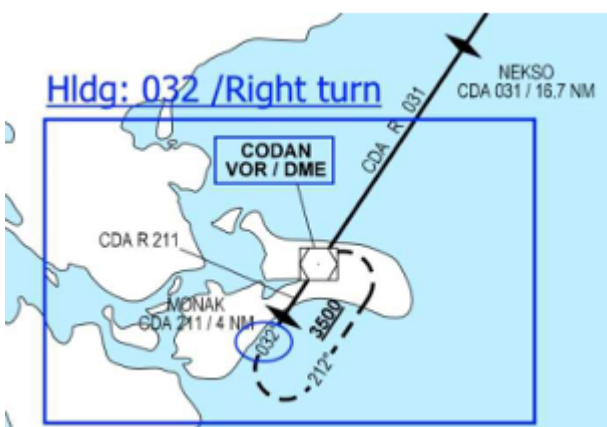
- Do not send airplanes into APP airspace on anything other than the cleared STAR with the required separation (specified below) unless specifically coordinated with EKCH\_W\_APP
- You need to CLOSELY adhere to [ACC LAI3 point 2.4.4](#)
- APP may ask you for other kinds of separation
- Keep an eye on TIDVU arrivals.



If no TIDVU arrivals are inbound, reduce all the way to 10-15 nm separation to keep flow coming

- If CDA hold is filled up, consider sending airplanes to D\_CTR for TUDLOU arrival if their traffic permits.
- Have EKDK\_CTR or EKDK\_A\_CTR handle GESKA inbounds to keep above FL285 if chaos is extreme

Arrival	Initial descend	Next SCT	XFL
MONAK (22L)	<b>FL100</b> Level by NEKSO	EKCH_O_APP (118.455)	FL90
MONAK (04L)	<b>FL80</b> Level by NEKSO	EKCH_O_APP (118.455)	FL90



Holding	In. course	Turn
MONAK	032	RIGHT

Do not use FL200 for holding to keep open for inbounds from NIKDA/KOSEB. If the holding is getting full above FL200, ask EDWW to do an en-route hold at NIKDA/KOSEB.

SID	Climb to	Next ACC
NEXEN	FL280	EKDK_C_CTR (128.215) or EKDK_A_CTR (135.290) if none of these is online, to EKDK_CTR (136.485)
LANGO		
KOPEX		

Revision #1

Created 5 January 2024 17:16:27 by Lukas Agerskov (1226374)

Updated 9 April 2024 18:29:36 by Lukas Agerskov (1226374)