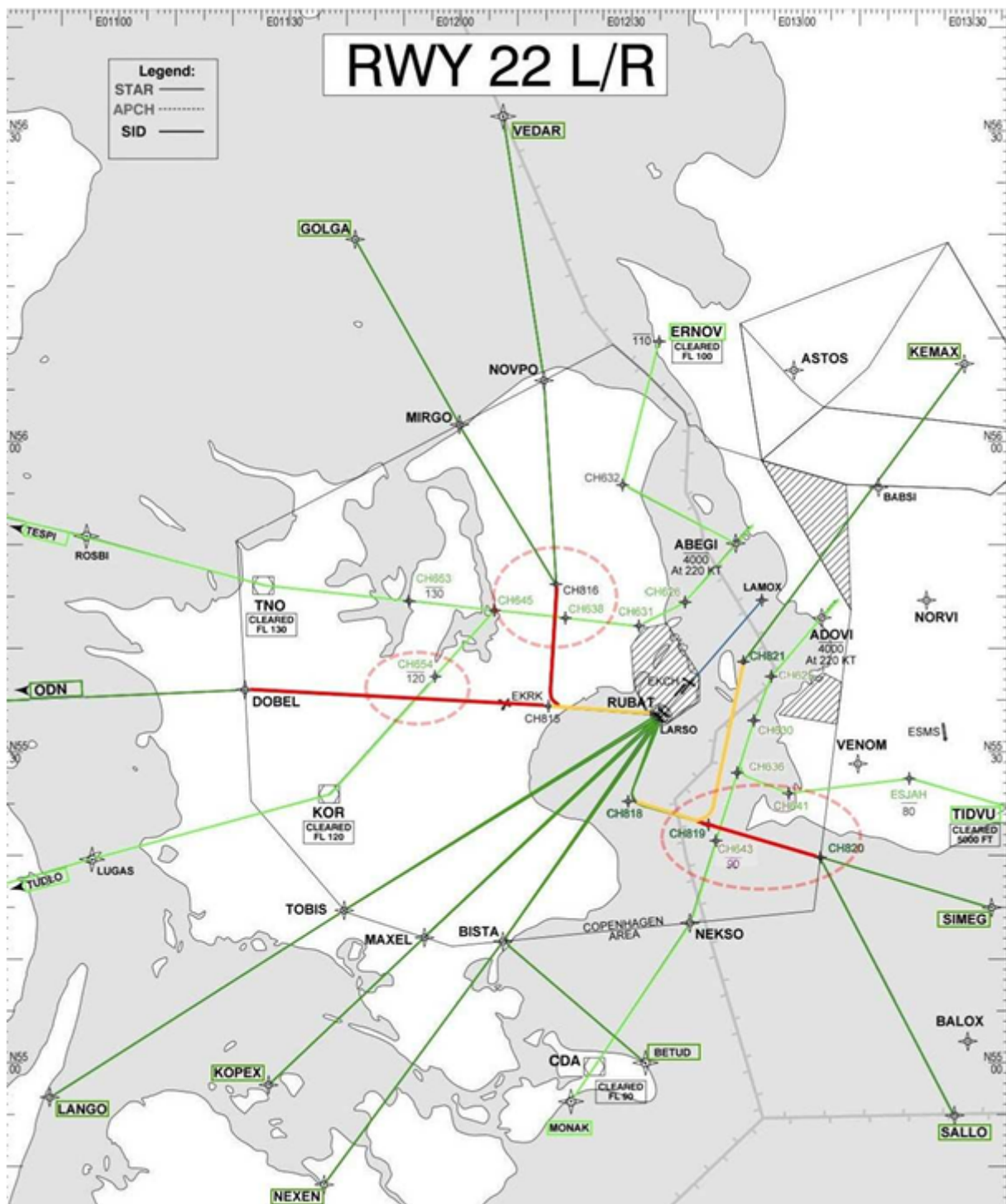


RIU ALL - DEPs

EKCH_R_DEP / EKCH_K_DEP (22R)

- Know the hotspots for departure crossing arrivals.
- Do NOT clear departures above FL70 until path is clear of arrivals
- Consider using Vectors and Directs to optimize flow.
- Respect that EKCH_W/O_APP have priority above FL75.
- R_DEP means controlling departures that passes Roskilde TMA
- K_DEP means controlling departures that are in Københavns TMA

Owner	SID	Primary next sector
K_DEP	NEXEN / LANGO / KOPEX	EKDK_B_CTR
R_DEP	ODN / GOLGA	EKDK_D_CTR
	VEDAR	ESMM_K_CTR
K_DEP	KEMAX	
	SIMEG / SALLO	ESMS_APP



EKCH_R_DEP / EKCH_K_DEP (04R)

- Know the hotspots for departure crossing arrivals.
- Do NOT clear departures above FL70 until path is clear of arrivals
- Consider using Vectors and Directs to optimize flow.
- Respect that EKCH_W/O_APP have priority above FL75.
- R_DEP means controlling departures that passes Roskilde TMA

- K_DEP means controlling departures that are in Københavns TMA

