

# EuroScope

Information about the different profiles included in the GNG package

- [TopSky Profile](#)
- [TWR / TWR CDM Profile](#)

# TopSky Profile

## General

### Keyboard Shortcuts

---

#### (**ALT** +)

---

- **A**: Toggles Basic ATS-Routes map.
- **V**: Toggles VFR Points map.
- **B**: Toggles VFR Points + Labels map
- **F**: Toggles TWR/APP Frequencies map.
- **T**: Toggles TMA Altitudes map.
- **M**: Toggles MVA/AMA map.
- **F1**: Opens new Notepad window.
- **F2**: Invoke SEP tool.
- **F3**: Invoke QDM vector.
- **F4**: Toggles quick look.
- **F5**: Toggles all prediction lines on/off.
- **F6**: Opens runway approach line window.
- **F7**: Opens FPL selection window.
- **F8**: Opens SSR code menu for the find track function.
- **F9**: Opens create APL window.
- **F10**: Toggles filtering of uncoupled labels.
- **F11**: Opens small QNH/TL window.
- **F12**: Opens track control window.

The default setup is using the F-keys to access different functions. GeForce Experience/GeForce uses may experience problems with clashing key bindings. Either change the key binding for GeForce or add the following settings to your "TopSkySettingsLocal.txt" file. This will use the normal 1,2,3...8,9,0,+,'-keys instead.

## TopSkySettingsLocal.txt

```
Shortcut_Notepad=0x31
Shortcut_SEP=0x32
Shortcut_QDM=0x33
Shortcut_Quick_Look=0x34
Shortcut_Vector=0x35
Shortcut_Rwy_Line=0x36
Shortcut_FPL_Search=0x37
Shortcut_Find_Track=0x38
Shortcut_Create_APL=0x39
Shortcut_Uncoupled_Label_Combo=0x12
Shortcut_Uncoupled_Label=0x30
Shortcut_QNHTL=0xBB
Shortcut_Track_Control=0xDB
Shortcut_FPL=0x00
```

# Track Labels

Data fields in "Normal Text", can be selected globally on/off via the Track Control Window, or for some of them, for individual tracks via the selected or Extended track label.

Data fields in **Bold Text**, is always shown.

Data fields in (Parentheses), are blank (instead of displaying the field name) when there is no data.

In case of the CFL/PEL field, only the PEL display can be selected off. For the COPN/COPX field, only the COPX display can be selected off.

The Selected Label is shown when the cursor is hovering over a label, otherwise the Unselected Label is shown.

## Uncorrelated label

Track label not correlated with a flight plan.

## Unselected track

---

**(EMRG ALRT)**

**(FLTID)/TSSR**

**AFL (a) GS**

**(DSFL) (DHDG) (DIAS) (DMACH) (DRC)**

## Selected track

---

**(EMRG ALRT)**

**(FLTID) TSSR**

**AFL (a) GS**

**(DSFL) (DHDG) (DIAS) (DMACH) (DRC)**

## Reduced label

---

Track label correlated with a flight plan. The Reduced label is shown for uncontrolled, unconcerned and notified tracks.

## Unselected track

---

**(V ALRT W S EMRG)**

**CALLSIGN (SI) (NRAC) ATYP WTC TSSR**

**AFL (a) FCOPX GS NPT ADES**

**(DSFL) (DHDG) (DIAS) (DMACH) (DRC)**

## Selected track

---

**(COM \* V ALRT W Y A + C TEL I S EMRG COORD CPDLC\_E CPDLC\_W TEXT2)**

**CALLSIGN SI (NRAC) ATYP WTC TSSR**

**AFL (a) FCOPX GS NPT ADES**

**CFL**

**(OP\_TEXT) [max 2 lines of text]**

**(DSFL) (DHDG) (DIAS) (DMACH) (DRC)**

## Standard label

---

Track label correlated with a flight plan. The Standard label is shown for Coordinated, Assumed, Redundant and Informed tracks.

## Unselected track

---

**(COM \* V ALRT W Y R P M • • A + C TEL I F S EMRG COORD NSSR CPDLC\_E  
CPDLC\_W TEXT2 TTLTTG)  
(MTDC) CALLSIGN (SI) (NRAC) ATYP WTC TSSR  
AFL (a) COPN/COPX GS NPT RFL ADES  
CFL/PEL XFL AHDG ASP ARC  
(DSFL) (DHDG) (DIAS) (DMACH) (DRC)**

## Selected track

---

**(COM \* V ALRT W Y R P M • • A + C TEL I F S EMRG COORD NSSR CPDLC\_E  
CPDLC\_W TEXT2 TTLTTG)  
(MTDC) CALLSIGN (SI) (NRAC) ATYP WTC TSSR  
AFL (a) COPN/COPX GS NPT RFL ADES  
CFL/PEL XFL AHDG ASP ARC  
(OP\_TEXT) [max 2 lines of text]  
(DSFL) (DHDG) (DIAS) (DMACH) (DRC)**

## Extended label

---

Extended track label correlated with a flight plan. The Extended label can be toggled by right click on Callsign for any track label except Uncorrelated tracks.

**(COM \* V ALRT W Y R P M • • A + C TEL I F S EMRG COORD NSSR CPDLC\_E  
CPDLC\_W TEXT2 TTLTTG SQ FF STAFF)  
(MTDC) CALLSIGN (SI) (NRAC) ATYP WTC TSSR ASSR PSSR FLTID FLTADD  
CODE  
AFL (a) COPN/COPX GS NPT RFL ADES ADEP EOBT/ATD  
CFL/PEL XFL AHDG ASP ARC EET  
SECTOR STATE LFUNC ALT1 ALT2  
(DSFL) (DHDG) (DIAS) (DMACH) (DRC)  
COMP\_CS  
FIELD15 [max 9 lines of text]  
(FIELD18) [max 6 lines of text]**

(FMF)  
(MALRT)  
OP\_TEXT  
OP\_TEXT2

# Mouse functions in track labels

Data Fields	Description	Left-click action	Right-click action
•	Frequency Set from Callsign menu		
•	Mark Set from Callsign menu		
+	Field 18 / FMF indicator		Open extended label
*	Unit	Toggle Units	
A	Manual alerts		Open extended label
a	Vertical Trend Indication	Invoke SEP tool with VSEP	
ADEP	Departure aerodrome		For debugging only: Toggle route prediction points draw
ADES	Destination aerodrome	Open FPL Window	Toggle ADES display
AFL	Actual Flight Level	Toggle AFL highlight	Toggle Level Band Highlight (AFL)
AHDG	Assigned heading	Open AHDG menu	Clear AHDG value / ACK, RJC or FAIL coord
ALRT	Alert message in priority order: “MSAW” “APW” “AIW” “L”(CLAM) “D” (DUPE)		Acknowledge AIW alert
ALT1/2		Open FPL Window	

Data Fields	Description	Left-click action	Right-click action
ARC	Assigned vertical rate	Open ARC menu	Clear ARC value / ACK, RJC or FAIL coord
ASP	Assigned speed	Open ASP menu	Clear ASP value / ACK, RJC or FAIL coord
ASSR	Assigned mode A code	Open ASSR menu	Send CPDLC Squawk SSR
ATYP	Aircraft type	Toggle ATYP highlight	Toggle ATYP display
C	Inbound clearance	Toggle Inbound clearance flag	
CALLSIGN	Callsign	Open Callsign menu	Open Extended label
CFL / PEL	Cleared Flight Level or Planned Entry Level	Open CFL/PEL menu	Open Vertical Aid Window
CODE	FPL mode S hex code		
COM	Communication type	Open communication type popup	
COMP_CS	ICAO RTF callsign		
COORD	Coordination message  ROF message sent / received: "ROF"  Transfer with release: "F" fully released "C" released for climb "D" released for descent "T" released for turns	Open Tactical transfer menu	Open Tactical Info Window
COPN / COPX	Entry point or Exit point	Open Waypoint menu	Toggle Route draw with MTCD
CPDLC_E	CPDLC Emergency messages: "SQ7500" "MAYDAY" "PAN"	Open CPDLC Emergency Acknowledgment menu	

Data Fields	Description	Left-click action	Right-click action
CPDLC_W	CPDLC Warning	CPDLC Warning functions	Open CPDLC Current Message Window
DGS	Downloaded ground speed		Toggle DGS display
DHDG	Downloaded heading		Toggle DHDG display
DIAS	Downloaded indicated airspeed Only estimated value if upper wind/temp data available.		Toggle DIAS display
DMACH	Downloaded Mach number Only estimated value if upper wind/temp data available.		Toggle DIAS display
DRC	Downloaded rate of climb/descent		Toggle DRC display
DSFL	Downloaded Selected Flight Level Not available		Toggle DSFL display
EET	Estimated Elapsed Time	Open FPL Window	
EMRG	Emergency: “HI” for squawk 7500 “CF” for squawk 7600 “EM” for squawk 7700		
EOBT / ATD	Estimated Off Block Time / Actual Time of Departure	Open FPL Window	
F	No fix warning If IFR flight is not routing via one of specified fixes to its destination	Toggle No Fix flag	
FCOPX	FIR COPX point		
FF	Feeder fix (provided by AMAN)		



Data Fields	Description	Left-click action	Right-click action
FIELD15	TAS, RFL and Route		
FIELD18	Other information		
FLTADD	Mode S transponder address		
FLTID	Aircraft identification		
FMF	Flight Message Field No information shown		
GS	Ground Speed	Invoke SEP tool	Toggle GS display
I	Flight information If OP_TEXT has data		Open extended label
LFUNC			
M	Military coordination	Toggle Military Coordination flag	Toggle Route draw with SAP
MALRT	Manual alerts Entered via Callsign menu: "MAPP" "IRREG" "WEATHER"		
MTCD	MTCD indicator “•” if aircraft has an MTCD conflict	Invoke SEP tool	Toggle Route draw with MTCD
NPT	Next route point	Open Waypoint menu	Open CPDLC Current Message Window
NRAC	Number of aircraft Number can be set by prefixing the aircraft type in the FPL by “X/” where X is the number.		
NSSR	SSR warning Displays ASSR if different from TSSR	Open ASSR menu	Send CPDLC Squawk SSR
OP_TEXT	Flight information message	Edit OP_TEXT	

Data Fields	Description	Left-click action	Right-click action
OP_TEXT2	OP-TEXT2 message	Edit OP_TEXT2	
P	No P-RNAV/RNAV1 capability		
PSSR	Previous mode A code		
R	No B-RNAV/RNAV5 capability		
RFL	Requested Flight Level	Open RFL menu	Open CPDLC Current Message Window
S	Mode S mismatch indicator		
SI	Sector Indicator	Assume / Transfer	Toggle SI frequency
SQ	Arrival sequence number (provided by AMAN)		
STAFF	Scheduled Time of Arrival at feeder fix (provided by AMAN)		
SECTOR STATE	Current system state Notified: NOTI Coordinated: COOR On-going coordination: ONGC Assumed: ASSU Transfer initiated: TRAN Redundant: REDU Terminated: TERM Free: FREE On-contact: ONCT		
TEXT2	OP-TEXT2 message	Edit OP_TEXT2	Open extended label
TSSR	Aircraft transmitted mode A code		
TTL_TTG	Time To Lose/Gain at feeder fix (provided by AMAN)		

Data Fields	Description	Left-click action	Right-click action
V/Y/Z	Flight rules "V" if VFR "Y" if first IFR and later VFR "Z" if first VFR and later IFR		
W	No RVSM capability		
WTC	Wake turbulence category	Toggle WTC highlight	
XFL	Exit Flight Level	Open XFL menu	Toggle Level Band Highlight (XFL)
Y	No 8.33kHz capability		

# Flight Lists

List fields in bold text e.g. "**C/S**", are shown by default.

List fields in normal text e.g. "EVT", is not shown by default but can be selected in the list top bar by pressing "F".

List fields in parentheses e.g. "**(ETN)**", indicate the default sorting for that list.

## Sector List

The Sector List contains all **Departed controlled flights** (all IFR, VFR only if assumed) in the *Coordinated* (from -15 min to ETO) and *Assumed* state.

Selected and configured from TopSky Tools menu.

Data Fields	Description	Left-click action	Right-click action
EVT	Event indicator		
<b>C/S</b>	CALLSIGN	Open Callsign menu	
<b>(ETN)</b>	Estimated Time Over sector entry		

Data Fields	Description	Left-click action	Right-click action
<b>PEL</b>	Planned Entry Level	Open PEL menu	Open Vertical Aid Window
<b>COPN</b>	Entry Coordination point	Open Waypoint menu	Toggle Route draw with MTCD
No	Number of aircraft. Number can be set by prefixing the aircraft type in the FPL by "X/" where X is the number.		
<b>ATYP</b>	Aircraft type	Toggle ATYP highlight	
<b>W</b>	Wake turbulence category	Toggle WTC highlight	
<b>R</b>	Flight rules "V" if VFR "Y" if first IFR and later VFR "Z" if first VFR and later IFR		
<b>CFL</b>	Cleared Flight Level	Open CFL menu	Open Vertical Aid Window
ASP	Assigned speed	Open ASP menu	Clear ASP value / ACK, RJC or FAIL coord
<b>XFL</b>	Exit Flight Level	Open XFL menu	Open Vertical Aid Window
<b>COPX</b>	Exit coordination point	Open Waypoint menu	Toggle Route draw with MTCD
<b>RFL</b>	Requested Flight Level	Open RFL menu	Open CPDLC Current Message Window
PSSR	Previous mode A code		Find PSSR
<b>ASSR</b>	Assigned mode A code	Open ASSR menu	Send CPDLC Squawk SSR
<b>ADEP</b>	Departure aerodrome		
SID	Assigned SID	Open SID menu	Acknowledge SID Allocation

Data Fields	Description	Left-click action	Right-click action
DRWY	Departure Runway		
<b>ADES</b>	Destination aerodrome	Open FPL Window	Open ES flight plan dialog
FF	Feeder fix (provided by AMAN)		
STA	Scheduled Time of Arrival at feeder fix (provided by AMAN)		
TTLTTG	Time To Lose/Gain at feeder fix (provided by AMAN)		
<b>SI</b>	Sector Indicator	Open next controller popup list	Simulation popup
<b>Not shown</b>	Manual Coordination flag	Accept Manual coordination	
<b>ETA</b>	Estimated Time of Arrival		
<b>STAR</b>	Assigned STAR	Open STAR menu	Acknowledge STAR Allocation
<b>ARWY</b>	Arrival Runway	Open RWY menu	
<b>Not shown</b>	Cleared to land Flag Shown within 12 NM from ADES. Red until toggled green.	Toggle CTL flag	
<b>STD</b>	Arrival Stand	Open Stand menu	
OP_TEXT	Flight information message	Edit OP_TEXT	
C	Check Indicator	Toggle Check Indicator	

## Departure List

The Departure List contains all **Non-departed flight** (IFR and VFR) from active airports.

Selected from EuroScope Quick SET.

Data Fields	Description	Left-click action	Right-click action
EVT	Event indicator		
C/S	CALLSIGN	Open Callsign menu	
No	Number of aircraft. Number can be set by prefixing the aircraft type in the FPL by "X/" where X is the number.		
ATYP	Aircraft type	Toggle ATYP highlight	
W	Wake turbulence category	Toggle WTC highlight	
R	Flight rules "V" if VFR "Y" if first IFR and later VFR "Z" if first VFR and later IFR		
TIME	EOBT (Estimated Off Block Time)	Open Time menu (EOBT)	
CTOT	CTOT (Calculated Take Off Time)	Open CTOT Option menu	Get Flow Message as Text
CFL	Cleared Flight Level	Open CFL menu	Open Vertical Aid Window
XFL	Exit Flight Level	Open XFL menu	Open Vertical Aid Window
COPX	Exit coordination point	Open Waypoint menu	Toggle Route draw with MTCD
ADEP	Departure aerodrome		
ADES	Destination aerodrome	Open FPL Window	Open ES flight plan dialog

Data Fields	Description	Left-click action	Right-click action
<b>RFL</b>	Requested Flight Level	Open RFL menu	
<b>ASSR</b>	Assigned mode A code	Open ASSR menu	
AHDG	Assigned heading	Open AHDG menu	Clear AHDG value / ACK, RJC or FAIL coord
<b>SID</b>	Assigned SID	Open SID menu	Acknowledge SID Allocation
<b>DRWY</b>	Departure Runway	Open RWY menu	
<b>SI</b>	Sector Indicator	Open next controller popup list	Simulation popup
<b>Not shown</b>	Manual Coordination flag	Accept Manual coordination	
DEP	Departure Coordination.	Toggle between: Estimate (EST) Depart (DEP) Abort (ABT)	
<b>CLR</b>	Combined clearance received flag, DCL dialogue status and CMT (Comment) indicator	Open PDC/DCL Window	Open CMT Pop-up
<b>STD</b>	Departure Stand	Open Stand menu	
<b>(STS)</b>	Ground Status	Open Ground State menu	
<b>PR</b>	Pending Request	Open Request Menu	
<b>OP_TEXT2</b>	OP-TEXT2 message	Edit OP_TEXT2	

## Load List

The Load List contains all **Departed controlled flight** (all IFR, VFR only if assumed) in the *Notified* state (from -60 to -16 min from ETO) and all **Non-departed controlled flights** in the *Notified* state (from -15 min to ETO).

Selected from TopSky Tools menu.

Data Fields	Description	Left-click action	Right-click action
<b>C/S</b>	CALLSIGN	Open Callsign menu	
No	Number of aircraft Number can be set by prefixing the aircraft type in the FPL by "X/" where X is the number.		
R	Flight rules "V" if VFR "Y" if first IFR and later VFR "Z" if first VFR and later IFR		
<b>(ETN)</b>	Estimated Time Over sector entry		
<b>PEL</b>	Planned Entry Level	Open PEL menu	Open Vertical Aid Window
<b>COPN</b>	Entry coordination point	Open Waypoint menu	Toggle Route draw with MTCD
<b>ADEP</b>	Departure aerodrome		
<b>ADES</b>	Destination aerodrome	Open FPL Window	Open ES flight plan dialog
PSSR	Previous mode A code		Find PSSR
ASSR	Assigned mode A code	Open ASSR menu	
<b>STS</b>	Ground Status		
C	Check Indicator	Toggle Check Indicator	

## Uncontrolled List 1 & 2

The Uncontrolled List contains all **Uncontrolled flights** (VFR not in assumed state) within or close to Sweden.

Selected and configured from TopSky Tools menu.



Data Fields	Description	Left-click action	Right-click action
<b>(C/S)</b>	CALLSIGN	Open Callsign menu	
<b>ASSR</b>	Assigned mode A code	Open ASSR menu	
No	Number of aircraft Number can be set by prefixing the aircraft type in the FPL by "X/" where X is the number.		
ATYP	Aircraft type	Toggle ATYP highlight	
<b>ADEP</b>	Departure aerodrome		
<b>EOBT</b>	EOBT (Estimated Off Block Time)	Open Time menu (EOBT)	
<b>ATD</b>	ATD (Actual Time of Departure)	Open Time menu (ATD)	Reset ATD to EOBT
<b>ADES</b>	Destination aerodrome	Open FPL Window	Open ES flight plan dialog
<b>ETA</b>	Estimated Time of Arrival		
FCOPN	FIR Entry coordination point		Toggle Route draw with MTCD
PEL	Planned Entry Level	Open PEL menu	Open Vertical Aid Window
FETN	Estimated Time Over FIR Entry		
FCOPX	FIR Exit coordination point		Toggle Route draw with MTCD
<b>LFUNC</b>	Logical Function (SI)	Open next controller popup list	Simulation popup
<b>OP_TEXT</b>	Flight information message	Edit OP_TEXT	
C	Check Indicator	Toggle Check Indicator	

# Traffic Management List 1 & 2

The Traffic Management List (TML) contains all **Departed flights** in the *Notified*, *Coordinated*, *Assumed* and *Redundant* state with a specific destination and/or routing via specified points. The ETO over the point (or ETA if no point specified) must be within the next 45 minutes. The destination must be specified to include uncontrolled flights in the list.

Selected and configured from TopSky Tools menu.

Data Fields	Description	Left-click action	Right-click action
EVT	Event indicator		
COPN	Entry Coordination point	Open Waypoint menu	Toggle Route draw with MTCD
SI	Sector Indicator	Open next controller popup list	Simulation popup
<b>C/S</b>	CALLSIGN	Open Callsign menu	
ASSR	Assigned mode A code	Open ASSR menu	Send CPDLC Squawk SSR
AFL	Actual Flight Level	Open AFL menu	
CFL	Cleared Flight Level	Open CFL menu	Open Vertical Aid Window
ATYP	Aircraft type	Toggle ATYP highlight	
RFL	Requested Flight Level	Open RFL menu	
COPX	Exit coordination point	Open Waypoint menu	Toggle Route draw with MTCD
FF	Feeder fix (provided by AMAN)		
<b>STA</b>	Scheduled Time of Arrival at feeder fix (provided by AMAN)		

Data Fields	Description	Left-click action	Right-click action
<b>TTLTTG</b>	Time To Lose/Gain at feeder fix (provided by AMAN)		
<b>(ETO)</b>	Estimated Time Over TML waypoint if selected or ETA		
<b>STAR</b>	Assigned STAR	Open STAR menu	Acknowledge STAR Allocation
ETA	Estimated Time of Arrival		
FText	Free Text	Edit FText	
C	Check Indicator	Toggle Check Indicator	
HOLD	Hold indicator	Toggle TML HOLD/XHOLD	

## Sector Inbound List

The Sector Inbound List (SIL) contains all **Departed controlled flight** (all IFR, VFR only if assumed) in the *Notified* (no time limit) and *Coordinated* state. Intended to be used on additional EuroScope instance to show inbound traffic, only shows 4 rows by default.

Selected from EuroScope Quick SET.

Data Fields	Description	Left-click action	Right-click action
<b>C/S</b>	CALLSIGN	Open Callsign menu	
PSSR	Previous mode A code		Find PSSR
ASSR	Assigned mode A code	Open ASSR menu	
<b>(ETN)</b>	Estimated Time Over sector entry		
<b>PEL</b>	Planned Entry Level	Open PEL menu	Open Vertical Aid Window

Data Fields	Description	Left-click action	Right-click action
<b>COPN</b>	Entry Coordination point	Open Waypoint menu	Toggle Route draw with MTCD
R	Flight rules “V” if VFR “Y” if first IFR and later VFR “Z” if first VFR and later IFR		
XFL	Exit Flight Level	Open XFL menu	Open Vertical Aid Window
COPX	Exit coordination point	Open Waypoint menu	Toggle Route draw with MTCD
RFL	Requested Flight Level	Open RFL menu	
ADEP	Departure aerodrome		
ADES	Destination aerodrome	Open FPL Window	Open ES flight plan dialog
SI	Sector Indicator	Open next controller popup list	Simulation popup
Not shown	Manual Coordination flag	Accept Manual coordination	
<b>C</b>	Check Indicator	Toggle Check Indicator	

## ETWR List

The ETWR List (Departure SIL) contains all **Controlled flight** (all IFR, VFR only if assumed) in the *Notified* and *Coordinated* state departing from a specific airport.

Selected and configured from TopSky Tools menu.

Data Fields	Description	Left-click action	Right-click action
<b>C/S</b>	CALLSIGN	Open Callsign menu	
PSSR	Previous mode A code		Find PSSR

Data Fields	Description	Left-click action	Right-click action
ASSR	Assigned mode A code	Open ASSR menu	
<b>(ETN)</b>	Estimated Time Over sector entry		
<b>PEL</b>	Planned Entry Level	Open PEL menu	Open Vertical Aid Window
<b>COPN</b>	Entry Coordination point	Open Waypoint menu	Toggle Route draw with MTCD
R	Flight rules “V” if VFR “Y” if first IFR and later VFR “Z” if first VFR and later IFR		
XFL	Exit Flight Level	Open XFL menu	Open Vertical Aid Window
COPX	Exit coordination point	Open Waypoint menu	Toggle Route draw with MTCD
RFL	Requested Flight Level	Open RFL menu	
ADEP	Departure aerodrome		
<b>SID</b>	Assigned SID	Open SID menu	Acknowledge SID Allocation
<b>DRWY</b>	Departure Runway	Open RWY menu	
ADES	Destination aerodrome	Open FPL Window	Open ES flight plan dialog
SI	Sector Indicator	Open next controller popup list	Simulation popup
Not shown	Manual Coordination flag	Accept Manual coordination	
STS	Ground Status		
<b>C</b>	Check Indicator	Toggle Check Indicator	

# Flight Plan List

The Flight Plan List contains all **Flight plans** on the network. By default the list is filtered to show only flight plans in the *Notified*, *Coordinated* and *Assumed* state. To show all flight plans, click "N" in the top bar.

Selected from EuroScope Quick SET.

Data Fields	Description	Left-click action	Right-click action
(C/S)	CALLSIGN	Open Callsign menu	
ADEP	Departure aerodrome		
ADES	Destination aerodrome	Open FPL Window	Open ES flight plan dialog
ASSR	Assigned mode A code	Open ASSR menu	
SI	Sector Indicator	Open next controller popup list	Simulation popup
STS	Ground Status		
STATE	Flight Plan State NOTST (Not Started) SIMUL (Simulated) TERM (Terminated)	Open Flight Plan State menu	

# Resectorisation List

The Resectorisation List contains all flights **Assumed** and **On-Contact** with a specific FLUNC (controller ID). Can be used at controller shift change to show all flights under the control of the other controller.

Data Fields	Description	Left-click action	Right-click action
(C/S)	CALLSIGN	Open Callsign menu	
SI	Sector Indicator	Assume	Simulation popup

Data Fields	Description	Left-click action	Right-click action
CFL	Cleared Flight Level		Open Vertical Aid Window
COPX	Exit coordination point		Toggle Route draw with MTCD
ASSR	Assigned mode A code		
CLR	Combined clearance received flag, DCL dialogue status and CMT (Comment) indicator		
STS	Ground Status		
C	Check Indicator	Toggle Check Indicator	

# TWR / TWR CDM Profile

## The Setup

### General

---

The Swedish TWR profile makes use of advanced ground states and flight lists, this requires Euroscope v.3.2.1.27 or later.

Since TopSky is designed to be used in an Area/Approach setting the functionality of that setup is not suited for the tower environment. The tower setup is intended to be used only by DEL, GND or TWR positions (with or without an associated TMA). APP and CTR positions shall use the TopSky setup.

There are two versions of the tower setup, one for use at airports with A-CDM (Airport Collaborative Decision Making) and one for airports without. The tower setup uses EuroScope lists in a way similar to a FPB (Flight Progress Board A.k.a. Strips) where the progress of a flight can be managed.

## Flight Progress Board

### Layout

---

The FPB (Flight Progress Board) consists of default EuroScope lists arranged in a way that lets you monitor and manage the progress of a flight. Two TopSky lists, Sector and Uncontrolled, are also part of the setup and they will be used to handle airborne traffic. All lists in the FPB have columns and functions specific to that phase of flight.



10 F S

Startup List

STS	C/S	SI	R	ATYP	W	STD	ADEP	ADES	DRWY	RTE/AHD	CFL	XFL	COPX	ASSR	CLR	RMK	EOBT	CTOT
	ACH6P			B737	M	12	ESGG	EPGD	03	LUKAX3M	A50	A50	IGGGE	4437			1810	
	AFR93PH			E190	M	13	ESGG	LFPG	03	VADIN3M	A50	A50	IGGGW	4711			1800	
	SEKLV		V	P28A	L	60	ESGG	ESGP	03	AHDG	A25	XFL	COPX	2122			1825	
FRQ	SEMLL	GE		DA42	L	74	ESGG	ESGT	03	MAXIV	A50	070	COPX	5336	OK		1815	
FRQ	WIF19G	GE		DH8A	M	14	ESGG	ENGM	03	SABAK3M	A50	A50	IGGGE	5421	OK	VECT	1815	
S/P	SAS439	GW		AT76	M	16	ESGG	EKCH	03	TOPLA3M	A50	A50	IGGGW	0230	OK		1805	
S/U	SWE51L	GE		PC24	M	3	ESGG	ESNZ	03	NEGIL3M	A50	A50	IGGGE	0210	OK		1820	

6 F S

Combined Taxi Out List

STS	C/S	SI	DSQ	R	ATYP	W	RTE/AHD	CLR	XFL	COPX	DRWY	RMK	CTOT
TXO	BAW791G	GE		2	A320	M	DETNA3M		A50	IGGGE	03		
TXO	SAS142	GE		1	A20N	M	LABAN3M		A50	IGGGE	03	HP C	

6 F S

Combined Taxi In List

STS	C/S	SI	ATYP	ADEP	STD	RMK
TXI	WZZ51			A321	LWSK	22A HS Z

4 F S

Combined Take-Off List

STS	C/S	SI	ATYP	W	RTE/AHD	XFL	COPX	DRWY	RMK
-----	-----	----	------	---	---------	-----	------	------	-----

4 F S

Combined ADC Sector List

STS	C/S	SI	ATYP	W	STD	ARWY	C/L	ETA
ARR	THY6BU			B38M	M	23A	03	1132
ARR	BRX1J			AT76	M	15	03	1137

15 F S

Sector List

C/S	ETN	PEL	COPN	ATYP	W	R	CFL	XFL	COPX	RFL	ASSR	ADEP	ADES	SI	ETA	STAR	ARWY	STD
BRX1J				AT76	M		A30	XFL	COPX	180	0426	ESNN	ESGG		1137	NEGIL3L	03	15
THY6BU				B38M	M		CA	CA	COPX	380		LTFM	ESGG		1132	ARQUS1L	03	23A

10 F S

Uncontrolled List 1

C/S	ASSR	ADEP	EOBT	ATD	ADES	ETA	LFUNC	COP	TEXT
SEKLV	2122	ESGG	1825		ESGP	1142			

A departing flight will appear in the Start-up list and will successively move to the Taxi Out list, Take-Off list and then to the Sector list. In the Start-up list you can manage any action necessary from receiving the flight plan to start-up and push-back. Once the aircraft calls for taxi the flight can be toggled to the Taxi Out list. When the aircraft receives the take-off clearance it will be toggled to the Take-Off list and once airborne it will show in the Sector list.

An arriving aircraft will initially appear in the Sector list and with less than 40 track miles to destination will also show in the ADC Sector list. The ADC Sector list will show the arrival sequence. Once the aircraft has landed it can be toggled to the Taxi In list.

Additionally, the setup contains the Uncontrolled list, showing all VFR flights, the Controller list and the METAR list. These lists are not forming part of the FPB.

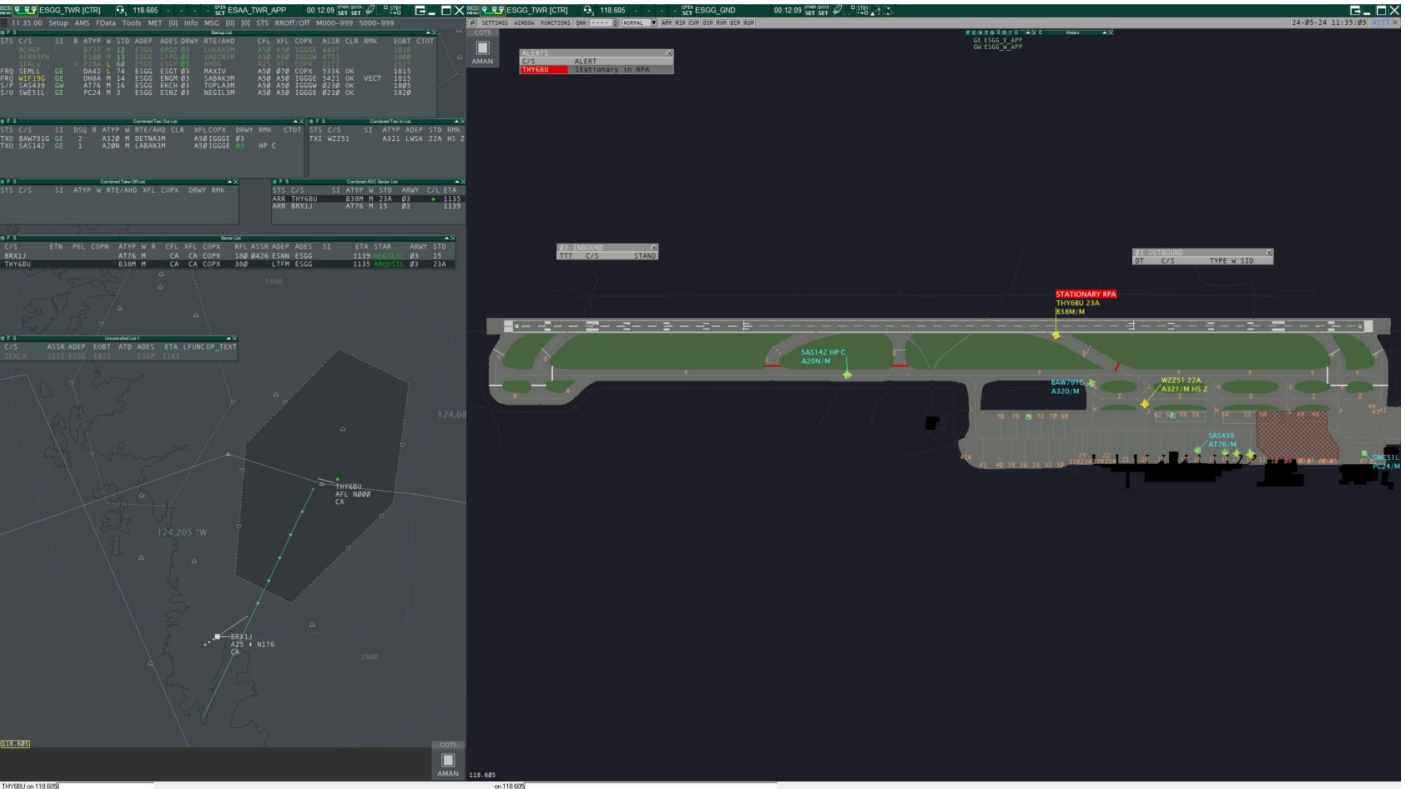
The A-CDM version of the FPB have a few additional columns in the Start-Up list related to the A-CDM / Departure sequencing. By default, the A-CDM version have more rows in the Start-Up and Taxi Out/In lists to allow for more traffic. The two versions of the FPB are otherwise identical.

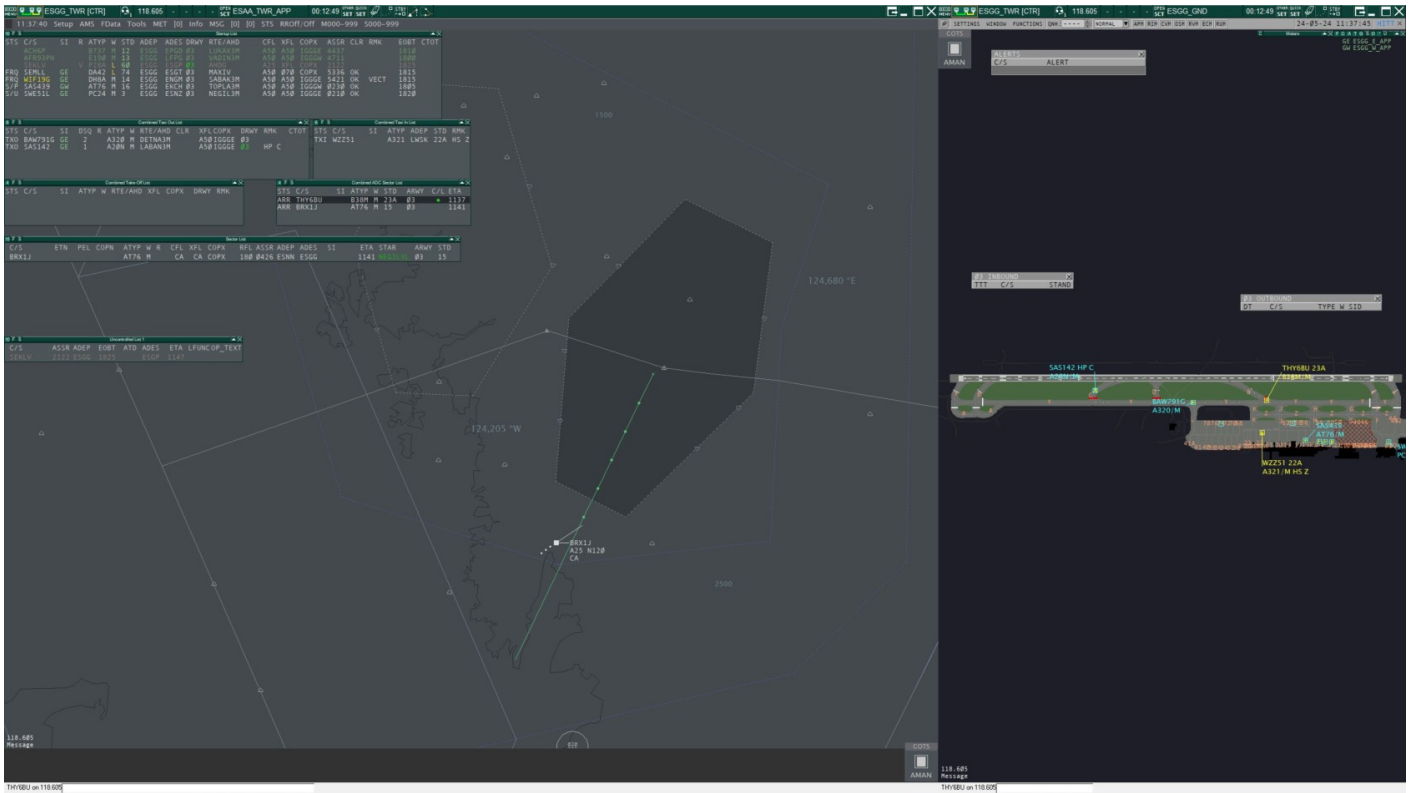
Depending on what position you are working, you are encourage to remove lists that are unnecessary for your task. This will free up screen space and let you focus on the responsibilities specific to your working position. Below is a table suggesting which lists to have open for which position.

	TWR	GND	DEL
Startup	X*	X	X
Taxi out	X	X	
Take-off	X		
ADC Sector	X	X	
Taxi in	X*	X	
Sector	X		

*\*Not needed if GND is open*

It is recommended to have the TWR setup in the same Euroscope instance as the primary situation display (radar display). This way the integration between the FPB, TopSky lists and situation display will be maintained and functions like the Flight Leg will work.





# Flight Progress

## General Use

A complete description of all functions and click actions in the list are described in section Flight Lists.

All lists in the FPB, TopSky lists excluded, have a common left side from where you can manage the progress of the flight:

### Ground Status (STS)

- Left Click: Set ground status
- Right Click: Assume/Transfer

### Call Sign (C/S)

- Left Click: Open handoff menu
- Right Click: Call Sign Highlight

### Sector Indicator (SI)

- Left Click: Open next controller menu
- Right Click: Assume/Transfer

Setting the ground status moves the flight across the FPB. The SI can be pre-set to the correct sector sequence. Right clicking on the STS or SI assumes or transfers the flight. In the handoff menu you can assume an uncontrolled flight, make a manual transfer or release a flight.

## Start-Up List

Shows traffic from receiving the flight plan until ground state S/U (Start-Up) or S/P (Start-Up & Push-Back).

PR	STS	C/S	SI	R	ATYP	W	STD	ADEP	ADES	DRWY	RTE/AHD	CFL	XFL	COPX	ASSR	CLR	RMK	EOBT	CTOT
-		ACH6P			B737	M	12	ESGG	EPGD	03	LUKAX3M	A50	A50	IGGGE	4475			1810	
-		AFR93PH			E190	M	13	ESGG	LFPG	03	VADIN3M	A50	A50	IGGGW	3421			1800	
-		SEKLV		V	P28A	L	60	ESGG	ESGP	03	AHDG	A25	XFL	COPX	7000			1825	
-	FRQ	WIF19G	GE		DH8A	M	14	ESGG	ENGM	03	H300	A50	A50	IGGGE	5315	OK	VECT	1815	
C1	FRQ	SEMLL	GE		DA42	L	74	ESGG	ESGT	03	MAXIV	A50	070	COPX	0260			1815	
-	S/P	SAS439	GW		AT76	M	16	ESGG	EKCH	03	TOPLA3M	A50	A50	IGGGW	0256	OK		1805	
-	S/U	SWE51L	GE		PC24	M	3	ESGG	ESNZ	03	NEGIL3M	A50	A50	IGGGE	0214	OK		1820	

Start-Up list is sorted by ground state.

Column RTE/AHD (Route/Assigned Heading) will only work correctly if logged on as DEL, GND or TWR. By default, RTE/AHD will show SID if available otherwise the first waypoint in the route or the assigned heading if set. Left click opens the SID menu where you can assign a different SID and right click opens the AHDG menu. To set a DCT left click on COPX to open the waypoint menu.

Column PR (Pending Request) is used to set reminders of pilot request that cannot handled directly. Left click and select the request in the menu. The letter indicates the type of request and the number in what order it was made. C = Clearance, S = Start Up, P = Push Back and T = Taxi. Once the request has been handled the PR-indicator will reset with either the CLR OK or updating the STS.

### Work flow:

1. Check flight plan by left click on ADES to open FPL window, FLEG can be toggled by right click on COPX.
2. If necessary, update RTE/AHD, left click to change SID and right click to set a heading.
3. Left click CLR, this opens the DEP Clearance menu. CFL and ASSR will be set automatically. Click **Cancel**.

4. Enter any special conditions (SLOW etc.) in the RMK column.
5. When aircraft calls, left click C/S and then assume and also left click STS and then FRQ (On Frequency).
6. Open DEP Clearance menu and give the departure clearance, click **OK** after the readback. PDC is available as well.
7. If necessary, update SI with correct sector sequence by left click on SI and selecting the next sector.
8. To transfer the flight to the next controller, right click on either STS or SI.
9. When approving start-up or push-back, set correct ground state.
10. With the taxi clearance, set ground state TXO. This will move the flight to the Taxi Out list.

## Taxi Out List

Shows traffic with ground state TXO (Taxi Out) or xLU (Line Up).

STS	C/S	SI	DSQ	R	ATYP	W	RTE/AHD	CLR	XFLCOPX	DRWY	HS	RMK	CTOT
TXO	SAS439	GW	3		AT76	M	TOPLA3M	OK	A50 IGGGW	03	Z		1139
TXO	BAW791G	GE	2		A320	M	DETNA3M	OK	A50 IGGGE	03	-		
xLU	SAS142	GE	1		A20N	M	MOXAM	OK	370 COPX	03	-		

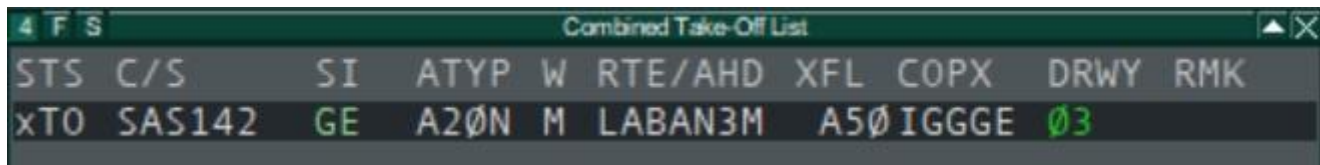
Taxi Out list is sorted by DSQ (Departure Sequence). To assign a departure sequence, left click on the blank space in the DSQ column, this will assign the next available sequence number. To edit or remove a sequence number left click on a number in the DSQ column, this will open the DSQ menu. To advance an aircraft in the sequence, right click on the number.

### Work flow:

1. When the flight appears in the list, update the SI with correct sector sequence if necessary and assign a departure sequence number.
2. Hold Short instructions can be entered in the HS column.
3. To transfer the flight to the next controller, right click on either STS or SI.
4. When aircraft is instructed to Line Up, set ground state xLU.
5. When the aircraft is cleared for Take-Off, set ground state xTO. This will move the flight to the Take-Off list.

## Take-Off List

Shows traffic with ground state xTO until the aircraft is airborne. Once the aircraft is airborne the flight will be moved to the Sector list.



4 F S	Combined Take-Off List								▲ X
STS	C/S	SI	ATYP	W	RTE/AHD	XFL	COPX	DRWY	RMK
xTO	SAS142	GE	A20N	M	LABAN3M	A50	IGGGE	03	

## ADC Sector List (Arrival Sequence)

Shows arriving traffic within 40 track miles with ground state ARR (Arrival).

4 F S		Combined ADC Sector List							▲ X	
STS	C/S	SI	ATYP	W	STD	ARWY	CTL	ETA		
ARR	THY6BU		B38M	M	23A	03	CTL	1701		
ARR	BRX1J		AT76	M	54	03	CTL	1703		
ARR	KLM1153		E295	M	17	03		1705		

This list is sorted by ETA.

### Work flow

1. Assume traffic by right click on either STS or SI.
2. If necessary, update SI with correct sector sequence by left click on SI and selecting the next sector.
3. Once cleared to land toggle the CTL (Cleared to Land) indication with a left click. The CTL flag will show up at 12 NM from the airport in red to indicate that landing clearance has not been given. Once toggled the CTL flag will turn green and after landing the flag will disappear.
4. To transfer the flight to the next controller, right click on either STS or SI.
5. With the taxi clearance, set ground state TAXI IN. This will move the flight to the Taxi In list.

## Taxi In List

Shows arriving traffic with ground state TAXI IN.

Taxi In List.JPG

This list is sorted by call sign.

### Work flow:



- 1. Hold Short instructions can be entered in the HS column.
- 2. If necessary, update SI with correct sector sequence.
- 3. Once the aircraft is on stand, left click call sign and select release.
- 4. After traffic is released, left click STS and select PARKED, this removes the traffic from the list.

## Sector List

This is a TopSky list with the same functionality as in the TopSky setup and is needed since we are using TopSky as the primary situation display. The Sector list is not part of the FPB but rather a complement to the situation display. For airborne traffic the majority of inputs are done in the label and not through the list.

Sector List																		
C/S	ETN	PEL	COPN	ATYP	W	R	CFL	XFL	COPX	RFL	ASSR	ADEP	ADES	SI	ETA	STAR	ARWY	STD
BAW791G				A320	M		A50	A50	IGGGE	380	5420	ESGG	EGLL	GE	1317			
BRX1J				AT76	M		CA	CA	COPX	180	0426	ESNN	ESGG		1152	NEGIL3L	03	15
SAS142				A20N	M		A50	A50	COPX	370	0240	ESGG	ESSA	GE	1222			

The list shows airborne traffic that is assumed by you or that will enter your sector in the coordinated state. If needed, traffic in the notified state can be displayed through selection in the TopSky menu TOOLS. Sector list is sorted by ETN for inbound traffic and by call sign when assumed.

The main difference is the call sign menu accessed by left clicking on the call sign. From this menu some additional functionality can be found e.g. setting the Missed Approach manual alert. Additionally, this list is using the TopSky flight plan window.

## Uncontrolled List

This is a TopSky list with the same functionality as in the TopSky setup. Uncontrolled list is not part of the FPB.

Uncontrolled List 1							
C/S	ASSR	ADEP	EOBT	ATD	ADES	ETA	LFUNCOP_TEXT
SEKLV	2122	ESGG	1825	1149	ESGP	1200	

This list shows only uncontrolled VFR, either in Free or On Contact state. Controlled VFR in the Assumed state is shown in the Sector list. The Uncontrolled list is not exclusive to a specific position and will show all uncontrolled VFR in Sweden.

## Known issues

There are some limitations and known issues with the setup. Flights on the FPB cannot easily be moved from the normal departure and arrival flow and this can create some difficulties.

Traffic with the same departure and arrival airport will disappear from the Taxi In list when Euroscope terminating the flight plan.

An arrival with a flight plan to the airport wants to depart again without filing a new flight plan:

1. Set ground status TAXI IN so the flight appear in the Taxi In list.
2. Then change status to TAXI OUT. The flight will now disappear from Taxi In list and will not show in the Taxi Out list since the flight plan contains the wrong departure airport.
3. In the ground radar display, open the call sign menu and select FPL (Flight Plan). Alternatively open the Euroscope Flight Plan list from the "Quick SET" dropdown menu from where the flight plan dialog can be opened.
4. Edit the flight plan and set "Origin" to the current airport. Now the flight should appear in the Taxi Out list.

As a general rule, if a flight is not showing properly in the Start-Up or Taxi Out list. Open the Flight Plan list and set Flight Plan status to "Terminate". This will usually reset any issues and the flight will appear in the correct list after a few seconds.

When signed in as Delivery there is usually an issue with the Start-Up list. Delivery can technically not have an separate sector in Euroscope when other positions are online and this will make all flights in the list appear in unconcerned state (greyed out). In this state the RTE/AHD column will not show the correct value until you assume the flight.

This can be fixed with the use of sector ownership:

1. Open "Other SET" menu and select "Sector ownership setup".
2. Click on "Select All" and wait until the list gets a grey background.
3. In the dropdown list at the bottom, select "DEL" and click "OK". Euroscope can freeze for a few seconds.

Now, the Start-Up list will show correct colours and values. The drawback is that the sector sequence will skip any ground position and those has to be selected manually.



# Ground Track Labels

This chapter describes the track labels as shown on ASRs using the Ground Radar plugin. For a description of TopSky track labels (such as shown on `ESAA_TWR_APP.asr`), see **TopSky**.

The track symbols and labels are colored according to the flight's status (arrival, departure or overflight/unknown).

- Arrivals are yellow
- Departures are light blue
- Overflight/unknown are light grey.

Data fields in normal text e.g. "SID", can be selected globally on/off via `SETTINGS` -> `Labels`.

Data fields in bold text e.g. "**CALLSIGN**", is always shown

Data fields in parentheses e.g. "(ALRT)", are blank when there is no data.

Right-clicking on the any track symbol toggles the heading lines.

## ESGG Departures

---

Track label for outbound flights.

### Unselected track

---

(ALRT ASSR\_E COMM)

**CALLSIGN (RMK)**

**ATYP/WTC DEP**

### Selected track

---

(ALRT ASSR\_E COMM)

**CALLSIGN RMK**

**ATYP/WTC DEP**

# ESGG Arrivals

---

Track label for inbound flights.

## Unselected track

---

(ALRT COMM)

**CALLSIGN (STAND)**

**ATYP/WTC RMK**

## Selected track

---

(ALRT COMM)

**CALLSIGN STAND**

**ATYP/WTC RMK**

# ESGG Overflight

---

Track label for flights that are neither outbound nor inbound.

## Unselected track

---

(ALRT COMM)

**CALLSIGN**

**ATYP/WTC RMK**

## Selected track

---

(ALRT COMM)

**CALLSIGN**

**ATYP/WTC RMK**

# ESSA Departures

---

Track label for outbound flights.

## Unselected track

---

(ALRT ASSR\_E COMM)

**CALLSIGN**

ATYP WTC DEP

REG **(RMK)**

## Selected track

---

(ALRT ASSR\_E COMM)

**CALLSIGN**

**ATYP WTC DEP**

**REG RMK**

## ESSA Arrivals

---

Track label for inbound flights.

## Unselected track

---

(ALRT COMM)

**CALLSIGN STAND**

ATYP WTC DEP

REG **(RMK)**

## Selected track

---

(ALRT COMM)

**CALLSIGN STAND**

**ATYP WTC DEP**

**REG RMK**

## ESSA Overflight

---

Track label for flights that are neither outbound nor inbound.

# Unselected track

(ALRT COMM)  
**CALLSIGN**  
ATYP WTC  
REG **(RMK)**

# Selected track

(ALRT COMM)  
**CALLSIGN**  
**ATYP WTC**  
**REG RMK**

# Mouse functions in track labels

Data Fields	Description	Left-click action	Right-click action
ALRT	Safety net alert indicator (yellow or red)		
ASSR_E	SSR code error indicator (red)		
ATYP	Aircraft type (ICAO)		
CALLSIGN	Callsign	Open Callsign menu	
COMM	Communication type indicator (yellow) “r” for voice receive only “t” for text only		
REG	Aircraft registration code (Read from FPL remarks)		
RMK	Remarks (scratchpad/OP-TEXT2 text)		

Data Fields	Description	Left-click action	Right-click action
DEP	Displays AHDG if set Displays SID if no AHDG set.	Open SID setup popup list	Open assigned heading popup list
STAND	Assigned arrival stand name. Yellow if reassigned and not acknowledged	Open Stand assignment menu. If yellow: Acknowledge new assignment	
WTC	Wake turbulence category		

## Other

For a description of track labels shown at other airports than ESGG and ESSA, refer to **Ground Radar plugin for EuroScope - General.pdf (4. Track presentation)** included in the GNG package.

# Flight Lists

List fields in bold text e.g. "**C/S**", are shown by default.

List fields in normal text e.g. "EVT", is not shown by default but can be selected in the list top bar by pressing "F".

List fields in parentheses e.g. "**(ETN)**", indicate the default sorting for that list.

## Start-Up List

Shows traffic from receiving the flight plan until ground state S/U (Start-Up) or S/P (Start-Up & Push-Back).

Data Fields	Description	Left-click action	Right-click action
EVT	VATCAN Event indicator		
<b>PR</b>	Pending Request	Open Request Menu	

Data Fields	Description	Left-click action	Right-click action
<b>(STS)</b>	Ground Status	Open Ground State menu	Assume / Transfer
<b>C/S</b>	Callsign	Open Callsign menu	Toggle callsign highlight
<b>SI</b>	Sector Indicator	Open next controller popup list	Assume / Transfer
<b>R</b>	Flight rules “V” if VFR “Y” if first IFR and later VFR “Z” if first VFR and later IFR		
<b>ATYP</b>	Aircraft type	Toggle ATYP highlight	
<b>W</b>	Wake turbulence category	Toggle WTC highlight	
<b>STD</b>	Departure Stand		
<b>ADEP</b>	Departure aerodrome		
<b>ADES</b>	Destination aerodrome	Open ES flight plan dialog	
<b>DRWY</b>	Departure Runway	Open RWY menu	
<b>RTE/AHD</b>	Displays AHDG if set Displays SID if no AHDG set.	Open SID menu	Open AHDG menu
<b>CFL</b>	Cleared Flight Level	Open CFL menu	
<b>XFL</b>	Exit Flight Level	Open XFL menu	
<b>COPX</b>	Exit coordination point	Open Waypoint menu	Toggle Route draw with MTCD
<b>ASSR</b>	Assigned mode A code	Open ASSR menu	
<b>CLR</b>	Combined clearance received flag, DCL dialogue status and CMT (Comment) indicator	Open PDC/DCL Window	Open CMT Pop-up

Data Fields	Description	Left-click action	Right-click action
<b>RMK</b>	Remarks (scratchpad text/OP-TEXT2)	Edit scratch pad string(OP_TEXT2)	
<b>EOBT</b>	EOBT (Estimated Off Block Time)	Open Time menu (EOBT)	
ECTOT	VATCAN Event CTOT (Calculated Take Off Time)		
<b>CTOT</b>	CTOT (Calculated Take Off Time)	Open Time menu (CTOT)	Reset CTOT to EOBT

The fields listed below are shown when using the CDM profile, for more information see **CDM Procedures ESSA**.

Data Fields	Description	Left-click action	Right-click action
<b>EOBT</b>	EOBT (Estimated Off Block Time)	Open EOBT Options	Open CDM Options
ECTOT	VATCAN Event CTOT (Calculated Take Off Time)		
<b>CTOT</b>	CTOT (Calculated Take Off Time)	Open CTOT Options	GET ECFMP Flow message as text
<b>E</b>	CDM Timing "P" if EOBT > 35 min in the future "C" if EOBT < 35 min in the future "I" if TSAT has expired		Open CDM Options
<b>TOBT</b>	EOBT (Estimated Off Block Time)	Open TOBT Options	Open CDM Options
<b>TSAT</b>	CTOT (Calculated Take Off Time)	Open TSAT Delay Add custom delay to all future TSATs	Open CDM Options

Data Fields	Description	Left-click action	Right-click action
Not shown	Target Start-Up Approval Communicated. Yellow if TSAT changes more than 5 minutes	Add TSAT to TSAC	Open CDM Options

# Taxi Out List

Shows traffic with ground state TXO (Taxi Out) or xLU (Line Up).

Data Fields	Description	Left-click action	Right-click action
STS	Ground Status	Open Ground State menu	Assume / Transfer
C/S	Callsign	Open Callsign menu	Toggle callsign highlight
SI	Sector Indicator	Open next controller popup list	Assume / Transfer
(DSQ)	Departure sequence number	Open DSQ menu If no number set: Assigns next available sequence number	Advance (decrease) aircraft sequence number by one
R	Flight rules “V” if VFR “Y” if first IFR and later VFR “Z” if first VFR and later IFR		
ATYP	Aircraft type	Toggle ATYP highlight	
W	Wake turbulence category	Toggle WTC highlight	
RTE/AHD	Displays AHDG if set Displays SID if no AHDG set.	Open SID menu	Open AHDG menu



Data Fields	Description	Left-click action	Right-click action
<b>CLR</b>	Combined clearance received flag, DCL dialogue status and CMT (Comment) indicator	Open PDC/DCL Window	Open CMT Pop-up
<b>XFL</b>	Exit Flight Level	Open XFL menu	
<b>COPX</b>	Exit coordination point	Open Waypoint menu	Toggle Route draw with MTCD
<b>DRWY</b>	Departure Runway	Open RWY menu	
<b>HS</b>	Hold Short Of	Open Hold Short of Menu	
<b>RMK</b>	Remarks (scratchpad text/OP-TEXT2)	Edit scratch pad string(OP_TEXT2)	
<b>CTOT</b>	CTOT (Calculated Take Off Time)	Open Time menu (CTOT)	Reset CTOT to EOBT

## Take-Off List

Shows traffic with ground state T/O until the aircraft is airborne. Once the aircraft is airborne the flight will be moved to the Sector list.

Data Fields	Description	Left-click action	Right-click action
<b>STS</b>	Ground Status	Open Ground State menu	Assume / Transfer
<b>(C/S)</b>	Callsign	Open Callsign menu	Toggle callsign highlight
<b>SI</b>	Sector Indicator	Open next controller popup list	Assume / Transfer
<b>ATYP</b>	Aircraft type	Toggle ATYP highlight	
<b>W</b>	Wake turbulence category	Toggle WTC highlight	

Data Fields	Description	Left-click action	Right-click action
<b>RTE/AHD</b>	Displays AHDG if set Displays SID if no AHDG set.	Open SID menu	Open AHDG menu
<b>XFL</b>	Exit Flight Level	Open XFL menu	
<b>COPX</b>	Exit coordination point	Open Waypoint menu	Toggle Route draw with MTCD
<b>DRWY</b>	Departure Runway	Open RWY menu	
<b>RMK</b>	Remarks (scratchpad text/OP-TEXT2)	Edit scratch pad string(OP_TEXT2)	

## ADC Sector List (Arrival Sequence)

Shows arriving traffic within 40 track miles with ground state ARR (Arrival).

Data Fields	Description	Left-click action	Right-click action
<b>STS</b>	Ground Status	Open Ground State menu	Assume / Transfer
<b>C/S</b>	Callsign	Open Callsign menu	Toggle callsign highlight
<b>SI</b>	Sector Indicator	Open next controller popup list	Assume / Transfer
<b>ATYP</b>	Aircraft type	Toggle ATYP highlight	
<b>W</b>	Wake turbulence category	Toggle WTC highlight	
<b>STD</b>	Arrival Stand	Open Stand menu	
<b>ARWY</b>	Arrival Runway	Open RWY menu	
<b>CTL</b>	Cleared to land Flag Shown within 12 NM from ADES. Red until toggled green.	Toggle CTL flag	

Data Fields	Description	Left-click action	Right-click action
(ETA)	Estimated Time of Arrival		

# Taxi In List

Shows arriving traffic with ground state TAXI IN.

Data Fields	Description	Left-click action	Right-click action
STS	Ground Status	Open Ground State menu	Assume / Transfer
(C/S)	Callsign	Open Callsign menu	Toggle callsign highlight
SI	Sector Indicator	Open next controller popup list	Assume / Transfer
ATYP	Aircraft type	Toggle ATYP highlight	
ADEP	Departure aerodrome		
STD	Arrival Stand	Open Stand menu	
HS	Hold Short Of	Open Hold Short of Menu	

# Sector List and Uncontrolled List 1 & 2

For a description of the Sector List and Uncontrolled List 1 & 2, see [TopSky](#).