

TWR / TWR CDM Profile

The Setup

ASR fast keys

(**F1** +)

- **1**: ESAA TWR APP
- **2**:
 - **TWR profile**: ESGG GND
 - **TWR CDM profile**: ESSA GND TWR-W
- **3**: ESSB GND
- **4**: ESMS GND
- **5**: ESPA GND
- **6**: ESKN GND

General

The Swedish TWR profile makes use of advanced ground states and flight lists, this requires Euroscope v.3.2.1.27 or later.

Since TopSky is designed to be used in an Area/Approach setting the functionality of that setup is not suited for the tower environment. The tower setup is intended to be used only by DEL, GND or TWR positions (with or without an associated TMA). APP and CTR positions shall use the TopSky setup.

There are two versions of the tower setup, one for use at airports with A-CDM (Airport Collaborative Decision Making) and one for airports without. The tower setup uses

EuroScope lists in a way similar to a FPB (Flight Progress Board A.k.a. Strips) where the progress of a flight can be managed.

Flight Progress Board

Layout

The FPB (Flight Progress Board) consists of default EuroScope lists arranged in a way that lets you monitor and manage the progress of a flight. Two TopSky lists, Sector and Uncontrolled, are also part of the setup and they will be used to handle airborne traffic. All lists in the FPB have columns and functions specific to that phase of flight.

10 F S

Startup List

STS	C/S	SI	R	ATYP	W	STD	ADEP	ADES	DRWY	RTE/AHD	CFL	XFL	COPX	ASSR	CLR	RMK	EOBT	CTOT
	ACH6P			B737	M	12	ESGG	EPGD	03	LUKAX3M	A50	A50	IGGGE	4437			1810	
	AFR93PH			E190	M	13	ESGG	LFPG	03	VADIN3M	A50	A50	IGGGW	4711			1800	
	SEKLV		V	P28A	L	60	ESGG	ESGP	03	AHDG	A25	XFL	COPX	2122			1825	
FRQ	SEMLL	GE		DA42	L	74	ESGG	ESGT	03	MAXIV	A50	070	COPX	5336	OK		1815	
FRQ	WIF19G	GE		DH8A	M	14	ESGG	ENGM	03	SABAK3M	A50	A50	IGGGE	5421	OK	VECT	1815	
S/P	SAS439	GW		AT76	M	16	ESGG	EKCH	03	TOPLA3M	A50	A50	IGGGW	0230	OK		1805	
S/U	SWE51L	GE		PC24	M	3	ESGG	ESNZ	03	NEGIL3M	A50	A50	IGGGE	0210	OK		1820	

6 F S

Combined Taxi Out List

STS	C/S	SI	DSQ	R	ATYP	W	RTE/AHD	CLR	XFL	COPX	DRWY	RMK	CTOT
TXO	BAW791G	GE		2	A320	M	DETNA3M		A50	IGGGE	03		
TXO	SAS142	GE		1	A20N	M	LABAN3M		A50	IGGGE	03	HP	C

6 F S

Combined Taxi In List

STS	C/S	SI	ATYP	ADEP	STD	RMK
TXI	WZZ51			A321	LWSK	22A HS Z

4 F S

Combined Take-Off List

STS	C/S	SI	ATYP	W	RTE/AHD	XFL	COPX	DRWY	RMK

4 F S

Combined ADC Sector List

STS	C/S	SI	ATYP	W	STD	ARWY	C/L	ETA
ARR	THY6BU			B38M	M	23A	03	1132
ARR	BRX1J			AT76	M	15	03	1137

15 F S

Sector List

C/S	ETN	PEL	COPN	ATYP	W	R	CFL	XFL	COPX	RFL	ASSR	ADEP	ADES	SI	ETA	STAR	ARWY	STD
BRX1J				AT76	M		A30	XFL	COPX	180	0426	ESNN	ESGG		1137	NEGIL3L	03	15
THY6BU				B38M	M		CA	CA	COPX	380		LTFM	ESGG		1132	ARQUS1L	03	23A

10 F S

Uncontrolled List 1

C/S	ASSR	ADEP	EOBT	ATD	ADES	ETA	LFUNC	OP	TEXT
SEKLV	2122	ESGG	1825		ESGP	1142			

A departing flight will appear in the Start-up list and will successively move to the Taxi Out list, Take-Off list and then to the Sector list. In the Start-up list you can manage any action necessary from receiving the flight plan to start-up and push-back. Once

the aircraft calls for taxi the flight can be toggled to the Taxi Out list. When the aircraft receives the take-off clearance it will be toggled to the Take-Off list and once airborne it will show in the Sector list.

An arriving aircraft will initially appear in the Sector list and with less than 40 track miles to destination will also show in the ADC Sector list. The ADC Sector list will show the arrival sequence. Once the aircraft has landed it can be toggled to the Taxi In list.

Additionally, the setup contains the Uncontrolled list, showing all VFR flights, the Controller list and the METAR list. These lists are not forming part of the FPB.

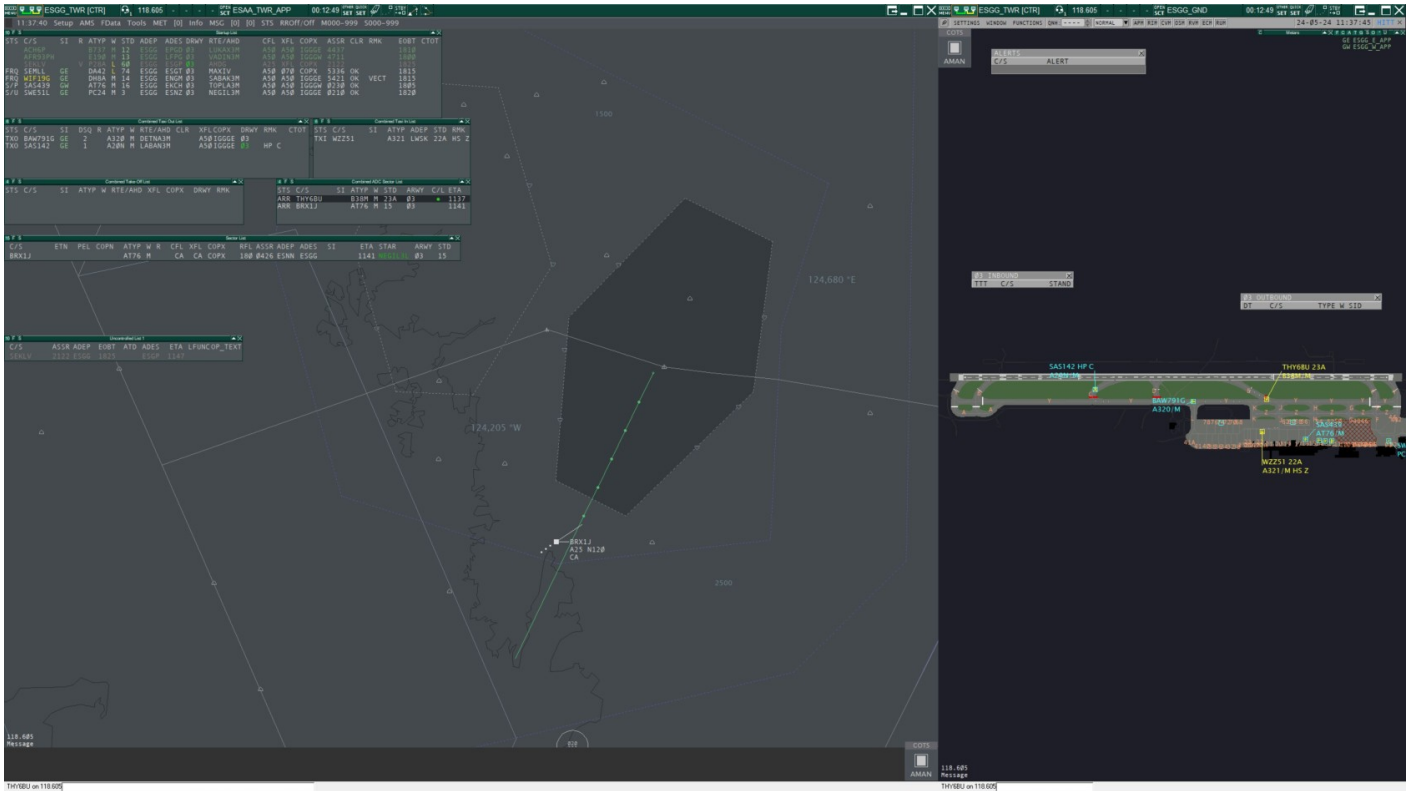
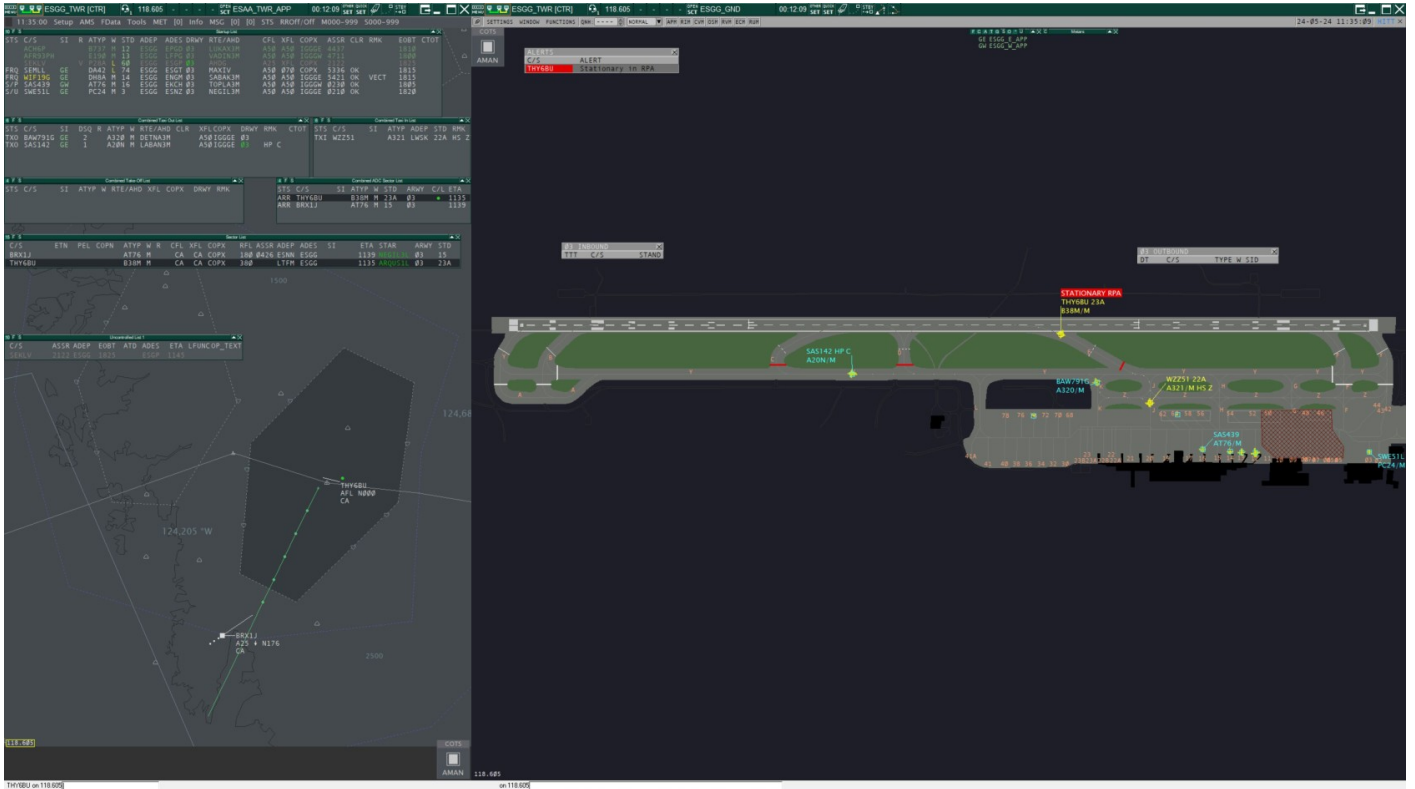
The A-CDM version of the FPB have a few additional columns in the Start-Up list related to the A-CDM / Departure sequencing. By default, the A-CDM version have more rows in the Start-Up and Taxi Out/In lists to allow for more traffic. The two versions of the FPB are otherwise identical.

Depending on what position you are working, you are encourage to remove lists that are unnecessary for your task. This will free up screen space and let you focus on the responsibilities specific to your working position. Below is a table suggesting which lists to have open for which position.

	TWR	GND	DEL
Startup	X*	X	X
Taxi out	X	X	
Take-off	X		
ADC Sector	X	X	
Taxi in	X*	X	
Sector	X		

**Not needed if GND is open*

It is recommended to have the TWR setup in the same Euroscope instance as the primary situation display (radar display). This way the integration between the FPB, TopSky lists and situation display will be maintained and functions like the Flight Leg will work.



Flight Progress

General Use

A complete description of all functions and click actions in the list are described in section Flight Lists.

All lists in the FPB, TopSky lists excluded, have a common left side from where you can manage the progress of the flight:

Ground Status (STS)

- Left Click: Set ground status
- Right Click: Assume/Transfer

Call Sign (C/S)

- Left Click: Open handoff menu
- Right Click: Call Sign Highlight

Sector Indicator (SI)

- Left Click: Open next controller menu
- Right Click: Assume/Transfer

Setting the ground status moves the flight across the FPB. The SI can be pre-set to the correct sector sequence. Right clicking on the STS or SI assumes or transfers the flight. In the handoff menu you can assume an uncontrolled flight, make a manual transfer or release a flight.

Start-Up List

Shows traffic from receiving the flight plan until ground state S/U (Start-Up) or S/P (Start-Up & Push-Back).



PR	STS	C/S	SI	R	ATYP	W	STD	ADEP	ADES	DRWY	RTE/AHD	CFL	XFL	COPX	ASSR	CLR	RMK	EOBT	CTOT
-		ACH6P			B737	M	12	ESGG	EPGD	03	LUKAX3M	A50	A50	IGGGE	4475			1810	
-		AFR93PH			E190	M	13	ESGG	LFPG	03	VADIN3M	A50	A50	IGGGW	3421			1800	
-		SEKLV		V	P28A	L	60	ESGG	ESGP	03	AHDG	A25	XFL	COPX	7000			1825	
-	FRQ	WIF19G	GE		DH8A	M	14	ESGG	ENGM	03	H300	A50	A50	IGGGE	5315	OK	VECT	1815	
C1	FRQ	SEMLL	GE		DA42	L	74	ESGG	ESGT	03	MAXIV	A50	070	COPX	0260			1815	
-	S/P	SAS439	GW		AT76	M	16	ESGG	EKCH	03	TOPLA3M	A50	A50	IGGGW	0256	OK		1805	
-	S/U	SWE51L	GE		PC24	M	3	ESGG	ESNZ	03	NEGIL3M	A50	A50	IGGGE	0214	OK		1820	

Start-Up list is sorted by ground state.

Column RTE/AHD (Route/Assigned Heading) will only work correctly if logged on as DEL, GND or TWR. By default, RTE/AHD will show SID if available otherwise the first

waypoint in the route or the assigned heading if set. Left click opens the SID menu where you can assign a different SID and right click opens the AHDG menu. To set a DCT left click on COPX to open the waypoint menu.

Column PR (Pending Request) is used to set reminders of pilot request that cannot be handled directly. Left click and select the request in the menu. The letter indicates the type of request and the number in what order it was made. C = Clearance, S = Start Up, P = Push Back and T = Taxi. Once the request has been handled the PR-indicator will reset with either the CLR OK or updating the STS.

Work flow:

1. Check flight plan by left click on ADES to open FPL window, FLEG can be toggled by right click on COPX.
2. If necessary, update RTE/AHD, left click to change SID and right click to set a heading.
3. Left click CLR, this opens the DEP Clearance menu. CFL and ASSR will be set automatically. Click **Cancel**.
4. Enter any special conditions (SLOW etc.) in the RMK column.
5. When aircraft calls, left click C/S and then assume and also left click STS and then FRQ (On Frequency).
6. Open DEP Clearance menu and give the departure clearance, click **OK** after the readback. PDC is available as well.
7. If necessary, update SI with correct sector sequence by left click on SI and selecting the next sector.
8. To transfer the flight to the next controller, right click on either STS or SI.
9. When approving start-up or push-back, set correct ground state.
10. With the taxi clearance, set ground state TXO. This will move the flight to the Taxi Out list.

Taxi Out List

Shows traffic with ground state TXO (Taxi Out) or xLU (Line Up).

Combined Taxi Out List													
STS	C/S	SI	DSQ	R	ATYP	W	RTE/AHD	CLR	XFL COPX	DRWY	HS	RMK	CTOT
TXO	SAS439	GW	3		AT76	M	TOPLA3M	OK	A50 IGGGW	03	Z		1139
TXO	BAW791G	GE	2		A320	M	DETNA3M	OK	A50 IGGGE	03	-		
xLU	SAS142	GE	1		A20N	M	MOXAM	OK	370 COPX	03	-		

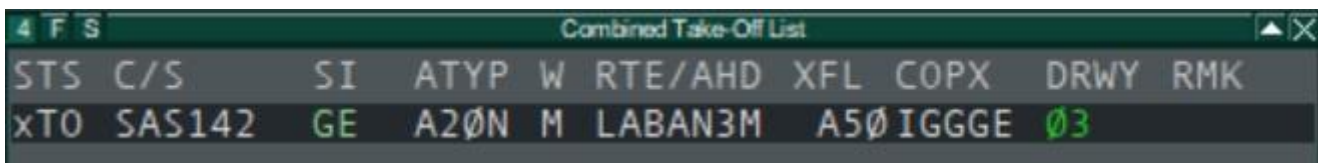
Taxi Out list is sorted by DSQ (Departure Sequence). To assign a departure sequence, left click on the blank space in the DSQ column, this will assign the next available sequence number. To edit or remove a sequence number left click on a number in the DSQ column, this will open the DSQ menu. To advance an aircraft in the sequence, right click on the number.

Work flow:

1. When the flight appears in the list, update the SI with correct sector sequence if necessary and assign a departure sequence number.
2. Hold Short instructions can be entered in the HS column.
3. To transfer the flight to the next controller, right click on either STS or SI.
4. When aircraft is instructed to Line Up, set ground state xLU.
5. When the aircraft is cleared for Take-Off, set ground state xTO. This will move the flight to the Take-Off list.

Take-Off List

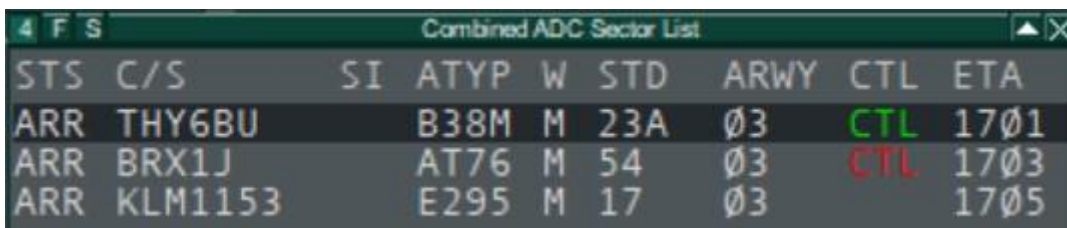
Shows traffic with ground state xTO until the aircraft is airborne. Once the aircraft is airborne the flight will be moved to the Sector list.



STS	C/S	SI	ATYP	W	RTE/AHD	XFL	COPX	DRWY	RMK
xTO	SAS142	GE	A2ØN	M	LABAN3M	A5Ø	IGGGE	Ø3	

ADC Sector List (Arrival Sequence)

Shows arriving traffic within 40 track miles with ground state ARR (Arrival).



STS	C/S	SI	ATYP	W	STD	ARWY	CTL	ETA
ARR	THY6BU		B38M	M	23A	Ø3	CTL	17Ø1
ARR	BRX1J		AT76	M	54	Ø3	CTL	17Ø3
ARR	KLM1153		E295	M	17	Ø3		17Ø5

This list is sorted by ETA.

Work flow

1. Assume traffic by right click on either STS or SI.

2. If necessary, update SI with correct sector sequence by left click on SI and selecting the next sector.
3. Once cleared to land toggle the CTL (Cleared to Land) indication with a left click. The CTL flag will show up at 12 NM from the airport in red to indicate that landing clearance has not been given. Once toggled the CTL flag will turn green and after landing the flag will disappear.
4. To transfer the flight to the next controller, right click on either STS or SI.
5. With the taxi clearance, set ground state TAXI IN. This will move the flight to the Taxi In list.

Taxi In List

Shows arriving traffic with ground state TAXI IN.

Taxi In List.JPG

This list is sorted by call sign.

Work flow:

1. Hold Short instructions can be entered in the HS column.
2. If necessary, update SI with correct sector sequence.
3. Once the aircraft is on stand, left click call sign and select release.
4. After traffic is released, left click STS and select PARKED, this removes the traffic from the list.

Sector List

This is a TopSky list with the same functionality as in the TopSky setup and is needed since we are using TopSky as the primary situation display. The Sector list is not part of the FPB but rather a complement to the situation display. For airborne traffic the majority of inputs are done in the label and not through the list.

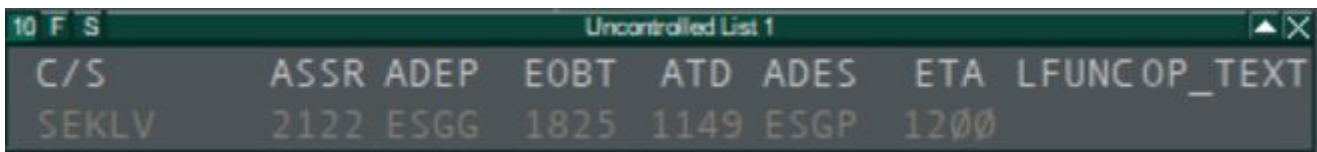
Sector List																		
C/S	ETN	PEL	COPN	ATYP	W	R	CFL	XFL	COPX	RFL	ASSR	ADEP	ADES	SI	ETA	STAR	ARWY	STD
BAW791G				A320	M		A50	A50	IGGGE	380	5420	ESGG	EGLL	GE	1317			
BRX1J				A76	M		CA	CA	COPX	180	0426	ESNN	ESGG		1152	NEGIL3L	03	15
SAS142				A20N	M		A50	A50	COPX	370	0240	ESGG	ESSA	GE	1222			

The list shows airborne traffic that is assumed by you or that will enter your sector in the coordinated state. If needed, traffic in the notified state can be displayed through selection in the TopSky menu TOOLS. Sector list is sorted by ETN for inbound traffic and by call sign when assumed.

The main difference is the call sign menu accessed by left clicking on the call sign. From this menu some additional functionality can be found e.g. setting the Missed Approach manual alert. Additionally, this list is using the TopSky flight plan window.

Uncontrolled List

This is a TopSky list with the same functionality as in the TopSky setup. Uncontrolled list is not part of the FPB.



C/S	ASSR ADEP	EOBT	ATD	ADES	ETA	LFUNCOP_TEXT
SEKLV	2122 ESGG	1825	1149	ESGP	1200	

This list shows only uncontrolled VFR, either in Free or On Contact state. Controlled VFR in the Assumed state is shown in the Sector list. The Uncontrolled list is not exclusive to a specific position and will show all uncontrolled VFR in Sweden.

Known issues

There are some limitations and known issues with the setup. Flights on the FPB cannot easily be moved from the normal departure and arrival flow and this can create some difficulties.

Traffic with the same departure and arrival airport will disappear from the Taxi In list when Euroscope terminating the flight plan.

An arrival with a flight plan to the airport wants to depart again without filing a new flight plan:

1. Set ground status TAXI IN so the flight appear in the Taxi In list.
2. Then change status to TAXI OUT. The flight will now disappear from Taxi In list and will not show in the Taxi Out list since the flight plan contains the wrong departure airport.
3. In the ground radar display, open the call sign menu and select FPL (Flight Plan). Alternatively open the Euroscope Flight Plan list from the “Quick SET” dropdown menu from where the flight plan dialog can be opened.
4. Edit the flight plan and set “Origin” to the current airport. Now the flight should appear in the Taxi Out list.

As a general rule, if a flight is not showing properly in the Start-Up or Taxi Out list. Open the Flight Plan list and set Flight Plan status to “Terminate”. This will usually reset any issues and the flight will appear in the correct list after a few seconds.

When signed in as Delivery there is usually an issue with the Start-Up list. Delivery can technically not have an separate sector in Euroscope when other positions are online and this will make all flights in the list appear in unconcerned state (greyed out). In this state the RTE/AHD column will not show the correct value until you assume the flight.

This can be fixed with the use of sector ownership:

1. Open “Other SET” menu and select “Sector ownership setup”.
2. Click on “Select All” and wait until the list gets a grey background.
3. In the dropdown list at the bottom, select “DEL” and click “OK”. Euroscope can freeze for a few seconds.

Now, the Start-Up list will show correct colours and values. The drawback is that the sector sequence will skip any ground position and those has to be selected manually.

Ground Track Labels

This chapter describes the track labels as shown on ASRs using the Ground Radar plugin. For a description of TopSky track labels (such as shown on `ESAA_TWR_APP.asr`), see **TopSky**.

The track symbols and labels are colored according to the flight’s status (arrival, departure or overflight/unknown).

- Arrivals are yellow
- Departures are light blue
- Overflight/unknown are light grey.

Data fields in normal text e.g. "SID", can be selected globally on/off via `SETTINGS` -> `Labels`.

Data fields in bold text e.g. "**CALLSIGN**", is always shown

Data fields in parentheses e.g. "(ALRT)", are blank when there is no data.

Right-clicking on the any track symbol toggles the heading lines.

ESGG Departures

Track label for outbound flights.

Unselected track

(ALRT ASSR_E COMM)

CALLSIGN (RMK)

ATYP/WTC DEP

Selected track

(ALRT ASSR_E COMM)

CALLSIGN RMK

ATYP/WTC DEP

ESGG Arrivals

Track label for inbound flights.

Unselected track

(ALRT COMM)

CALLSIGN (STAND)

ATYP/WTC RMK

Selected track

(ALRT COMM)

CALLSIGN STAND

ATYP/WTC RMK

ESGG Overflight

Track label for flights that are neither outbound nor inbound.

Unselected track

(ALRT COMM)

CALLSIGN

ATYP/WTC RMK

Selected track

(ALRT COMM)

CALLSIGN

ATYP/WTC RMK

ESSA Departures

Track label for outbound flights.

Unselected track

(ALRT ASSR_E COMM)

CALLSIGN

ATYP WTC DEP

REG (RMK)

Selected track

(ALRT ASSR_E COMM)

CALLSIGN

ATYP WTC DEP

REG RMK

ESSA Arrivals

Track label for inbound flights.

Unselected track

(ALRT COMM)
CALLSIGN STAND
ATYP WTC DEP
REG **(RMK)**

Selected track

(ALRT COMM)
CALLSIGN STAND
ATYP WTC DEP
REG RMK

ESSA Overflight

Track label for flights that are neither outbound nor inbound.

Unselected track

(ALRT COMM)
CALLSIGN
ATYP WTC
REG **(RMK)**

Selected track

(ALRT COMM)
CALLSIGN
ATYP WTC
REG RMK

Mouse functions in track labels

Data Fields	Description	Left-click action	Right-click action
-------------	-------------	-------------------	--------------------

ALRT	Safety net alert indicator (yellow or red)		
ASSR_E	SSR code error indicator (red)		
ATYP	Aircraft type (ICAO)		
CALLSIGN	Callsign	Open Callsign menu	
COMM	Communication type indicator (yellow) "r" for voice receive only "t" for text only		
REG	Aircraft registration code (Read from FPL remarks)		
RMK	Remarks (scratchpad/OP-TEXT2 text)		
DEP	Displays AHDG if set Displays SID if no AHDG set.	Open SID setup popup list	Open assigned heading popup list
STAND	Assigned arrival stand name. Yellow if reassigned and not acknowledged	Open Stand assignment menu. If yellow: Acknowledge new assignment	
WTC	Wake turbulence category		

Other

For a description of track labels shown at other airports than ESGG and ESSA, refer to **Ground Radar plugin for EuroScope - General.pdf (4. Track presentation)** included in the GNG package.

Flight Lists

List fields in bold text e.g. "**C/S**", are shown by default.

List fields in normal text e.g. "EVT", is not shown by default but can be selected in the list top bar by pressing "F".

List fields in parentheses e.g. "**(ETN)**", indicate the default sorting for that list.

Start-Up List

Shows traffic from receiving the flight plan until ground state S/U (Start-Up) or S/P (Start-Up & Push-Back).

Data Fields	Description	Left-click action	Right-click action
EVT	VATCAN Event indicator		
PR	Pending Request	Open Request Menu	
(STS)	Ground Status	Open Ground State menu	Assume / Transfer
C/S	Callsign	Open Callsign menu	Toggle callsign highlight
SI	Sector Indicator	Open next controller popup list	Assume / Transfer
R	Flight rules "V" if VFR "Y" if first IFR and later VFR "Z" if first VFR and later IFR		
ATYP	Aircraft type	Toggle ATYP highlight	
W	Wake turbulence category	Toggle WTC highlight	
STD	Departure Stand		
ADEP	Departure aerodrome		

Data Fields	Description	Left-click action	Right-click action
ADES	Destination aerodrome	Open ES flight plan dialog	
DRWY	Departure Runway	Open RWY menu	
RTE/AHD	Displays AHDG if set Displays SID if no AHDG set.	Open SID menu	Open AHDG menu
CFL	Cleared Flight Level	Open CFL menu	
XFL	Exit Flight Level	Open XFL menu	
COPX	Exit coordination point	Open Waypoint menu	Toggle Route draw with MTCD
ASSR	Assigned mode A code	Open ASSR menu	
CLR	Combined clearance received flag, DCL dialogue status and CMT (Comment) indicator	Open PDC/DCL Window	Open CMT Pop-up
RMK	Remarks (scratchpad text/OP-TEXT2)	Edit scratch pad string(OP_TEXT2)	
EOBT	EOBT (Estimated Off Block Time)	Open Time menu (EOBT)	
ECTOT	VATCAN Event CTOT (Calculated Take Off Time)		
CTOT	CTOT (Calculated Take Off Time)	CTOT Options	Network Status Options

The fields listed below are shown when using the CDM profile, for more information see **CDM Procedures ESSA**.

Data Fields	Description	Left-click action	Right-click action
EOBT	EOBT (Estimated Off Block Time)	Open EOBT Options	Open CDM Options

Data Fields	Description	Left-click action	Right-click action
ECTOT	VATCAN Event CTOT (Calculated Take Off Time)		
CTOT	CTOT (Calculated Take Off Time)	CTOT Options	Network Status Options
E	CDM Timing "P" if EOBT > 35 min in the future "C" if EOBT < 35 min in the future "I" if TSAT has expired		Open CDM Options
TOBT	EOBT (Estimated Off Block Time)	Open TOBT Options	Open CDM Options
TSAT	CTOT (Calculated Take Off Time)	Open TSAT Delay Add custom delay to all future TSATs	Open CDM Options
Not shown	Target Start-Up Approval Communicated. Yellow if TSAT changes more than 5 minutes	Add TSAT to TSAC	Open CDM Options

Taxi Out List

Shows traffic with ground state TXO (Taxi Out) or xLU (Line Up).

Data Fields	Description	Left-click action	Right-click action
STS	Ground Status	Open Ground State menu	Assume / Transfer
C/S	Callsign	Open Callsign menu	Toggle callsign highlight
SI	Sector Indicator	Open next controller popup list	Assume / Transfer

Data Fields	Description	Left-click action	Right-click action
(DSQ)	Departure sequence number	Open DSQ menu If no number set: Assigns next available sequence number	Advance (decrease) aircraft sequence number by one
R	Flight rules "V" if VFR "Y" if first IFR and later VFR "Z" if first VFR and later IFR		
ATYP	Aircraft type	Toggle ATYP highlight	
W	Wake turbulence category	Toggle WTC highlight	
RTE/AHD	Displays AHDG if set Displays SID if no AHDG set.	Open SID menu	Open AHDG menu
CLR	Combined clearance received flag, DCL dialogue status and CMT (Comment) indicator	Open PDC/DCL Window	Open CMT Pop-up
XFL	Exit Flight Level	Open XFL menu	
COPX	Exit coordination point	Open Waypoint menu	Toggle Route draw with MTCD
DRWY	Departure Runway	Open RWY menu	
HS	Hold Short Of	Open Hold Short of Menu	
RMK	Remarks (scratchpad text/OP-TEXT2)	Edit scratch pad string(OP_TEXT2)	
CTOT	CTOT (Calculated Take Off Time)	CTOT Options	Network Status Options

Take-Off List

Shows traffic with ground state T/O until the aircraft is airborne. Once the aircraft is airborne the flight will be moved to the Sector list.

Data Fields	Description	Left-click action	Right-click action
STS	Ground Status	Open Ground State menu	Assume / Transfer
(C/S)	Callsign	Open Callsign menu	Toggle callsign highlight
SI	Sector Indicator	Open next controller popup list	Assume / Transfer
ATYP	Aircraft type	Toggle ATYP highlight	
W	Wake turbulence category	Toggle WTC highlight	
RTE/AHD	Displays AHDG if set Displays SID if no AHDG set.	Open SID menu	Open AHDG menu
XFL	Exit Flight Level	Open XFL menu	
COPX	Exit coordination point	Open Waypoint menu	Toggle Route draw with MTCD
DRWY	Departure Runway	Open RWY menu	
RMK	Remarks (scratchpad text/OP-TEXT2)	Edit scratch pad string(OP_TEXT2)	

ADC Sector List (Arrival Sequence)

Shows arriving traffic within 40 track miles with ground state ARR (Arrival).

Data Fields	Description	Left-click action	Right-click action
STS	Ground Status	Open Ground State menu	Assume / Transfer
C/S	Callsign	Open Callsign menu	Toggle callsign highlight

Data Fields	Description	Left-click action	Right-click action
SI	Sector Indicator	Open next controller popup list	Assume / Transfer
ATYP	Aircraft type	Toggle ATYP highlight	
W	Wake turbulence category	Toggle WTC highlight	
STD	Arrival Stand	Open Stand menu	
ARWY	Arrival Runway	Open RWY menu	
CTL	Cleared to land Flag Shown within 12 NM from ADES. Red until toggled green.	Toggle CTL flag	
(ETA)	Estimated Time of Arrival		

Taxi In List

Shows arriving traffic with ground state TAXI IN.

Data Fields	Description	Left-click action	Right-click action
STS	Ground Status	Open Ground State menu	Assume / Transfer
(C/S)	Callsign	Open Callsign menu	Toggle callsign highlight
SI	Sector Indicator	Open next controller popup list	Assume / Transfer
ATYP	Aircraft type	Toggle ATYP highlight	
ADEP	Departure aerodrome		
STD	Arrival Stand	Open Stand menu	
HS	Hold Short Of	Open Hold Short of Menu	

Sector List and Uncontrolled List 1 & 2

For a description of the Sector List and Uncontrolled List 1 & 2, see **TopSky**.

Revision #19

Created 19 May 2024 14:19:03 by Max Kuhla (1157125)

Updated 21 March 2025 12:33:19 by Petter Jakobsson (853449)