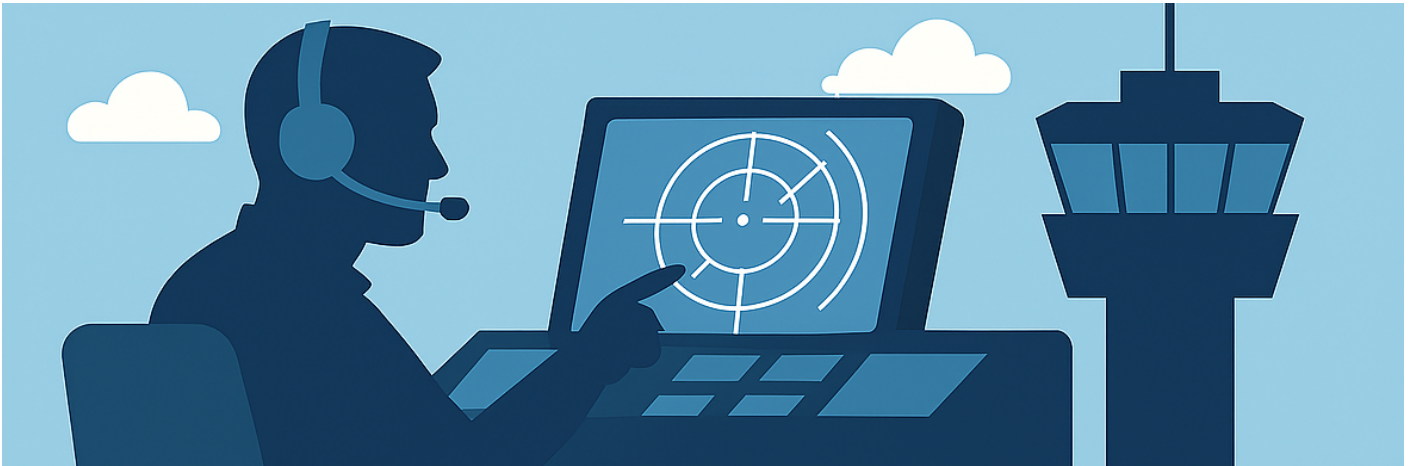


# SYLLABUS FOR TRAININGS

Information of all requirements for training on different ratings

- [S2 Syllabus](#)
- [S3 Syllabus](#)
- [C1 Syllabus](#)

# S2 Syllabus



## S2 TRAINING SYLLABUS - EKDK

**The student must gain proficiency and knowledge in the following chapters.**

### EUROSCOPE

- Master all TAG manipulation.
- Guided through and gain proficiency in all relevant TOPSKY items.
- Possible relevant tactical options in Euroscope for GND.

### MANAGEMENT

- Management and priority of traffic, including effective handling of non-standard situations.
- Demonstrate sound judgment in managing Arrivals and Departures.
- Revert to basics in order to cope with increased traffic.

## PROCEDURES

---

- Provide appropriate instructions in accordance with PART-ATS.
- Analyze and understand all parts of charts for relevant airspace/airports.
- Issue correct Push and Taxi instructions, according to standards.
- Consistent structure in giving Push and Taxi instructions.

## PHRASEOLOGY

---

- Distinguish and understand S2 phraseology.
- Flawless phraseology for standard operations such as Clearances, instructions and informations.
- Ability to find answers to several rare types of phraseology by navigating ATS Instruction 14.

## SEPERATION

---

- Demonstrate understanding conditional clearances.
- Demonstrate separation mitigation in a timely manner.
- Display adequate knowledge of wake turbulence, SID and performance separation and requirements.

## VFR

---

- Demonstrate knowledge of VFR principles and clearances in relevant airspace class.
- Demonstrate correct usage of VFR phraseology with only a few mistakes.
- Demonstrate appropriate traffic information in a timely manner.
- Resolve conflicts between VFR and IFR.

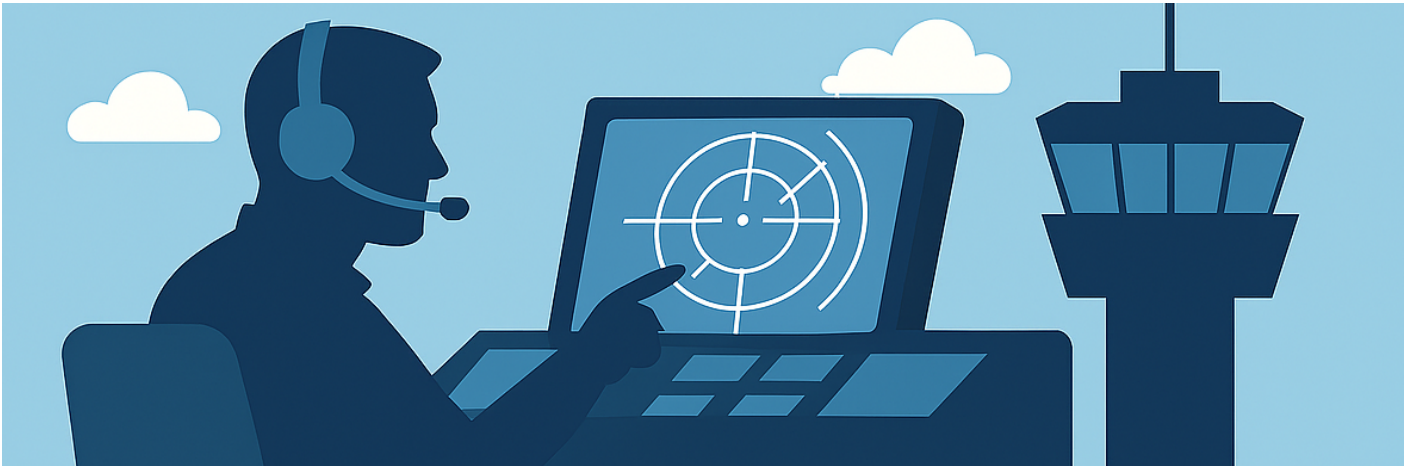
## LOCAL REGULATIONS

---

- Student must demonstrate a deep knowledge of LAI – Billund, as well as all other relevant areas of airports student is likely to control (EKKA, EKAH, EKYT).
- LAI EKCH – Know all the aspects and keep being updated on changes.

TRAINING DEPARTMENT EKDK – FEBRUARY 2026

# S3 Syllabus



## S3 TRAINING SYLLABUS - EKDK

**The student must gain proficiency and knowledge in the following chapters.**

### EUROSCOPE

- Master all TAG manipulation.
- Know all the possible relevant tactical options in Euroscope. Guided through and gain proficiency
- in all relevant TOPSKY items.
- Display effective usage of Euroscope's capabilities for Top Down.
- Proficient in the theory behind using the RADIS scope.

### MANAGEMENT

- Display appropriate management and priority of traffic, including effective handling of non-standard situations.

- Demonstrate sound judgment in managing RNAV STARs vs. vectors.
- Revert to basics in order to cope with increased traffic.
- Consistent structure in final approach management.
- Consistent structure in sequencing departures and arrivals.
- Provide TOP / DOWN services to high standards.

## PROCEDURES

---

- Provide appropriate instructions in accordance with PART-ATS.
- Repeatedly display good management in predicting flow and sequencing.
- Proficient in the differences between procedural, AFIS and Vector instructions.
- Analyze and understand all parts of charts for relevant airspace/airports.
- Know LOA procedures for neighboring ACC and comply with them.

## PHRASEOLOGY

---

- Distinguish and understand S3 phraseology.
- Flawless phraseology for standard operations such as descents, speeds, and path corrections.
- Ability to find answers to several rare types of phraseology by navigating ATS Instruction 14.
- AFIS phraseology and demonstrate knowledge of how to handle AFIS and procedural traffic.

## SEPERATION

---

- Demonstrate understanding of separation requirements.
- Demonstrate separation mitigation in a timely manner.
- Demonstrate use of separation methods. (Vectors, speeds and altitude) and Tactical directs.
- Display adequate knowledge of wake turbulence, SID and performance separation and requirements.

## VFR

---

- Demonstrate knowledge of VFR principles and clearances in relevant airspace class.
- Demonstrate correct usage of VFR phraseology with only a few mistakes.
- Demonstrate appropriate traffic information in a timely manner.
- Resolve conflicts between VFR and IFR

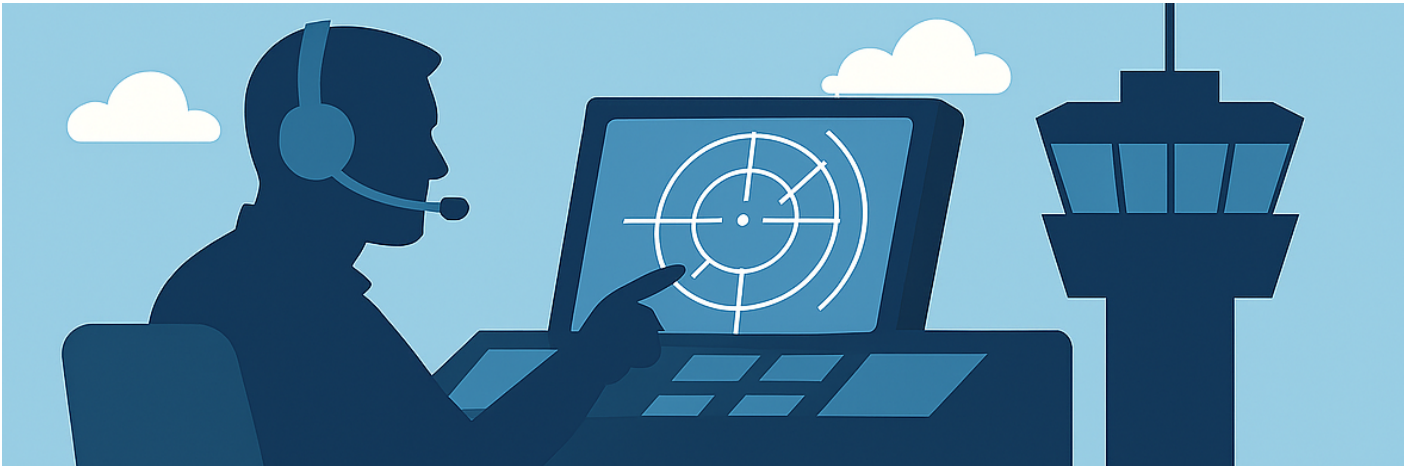
## LOCAL REGULATIONS

---

- Demonstrate a deep knowledge of LAI Billund, as well as all other relevant areas of airports the student is eligible and likely to control (EKKA, EKAH, EKYT).
- T1 endorsement for EKCH requires deep knowledge of LAI for EKCH / EKRK
- Student must understand airspace classification and know the practical differences.

TRAINING DEPARTMENT EKDK – FEBRUARY 2026

# C1 Syllabus



## C1 TRAINING SYLLABUS - EKDK

**The student must gain proficiency and knowledge in the following chapters.**

### EUROSCOPE

- Master all TAG manipulation.
- Know all the possible relevant tactical options in Euroscope.
- Guided through and gain proficiency in all relevant TOPSKY items.
- Proficient in the theory behind using the RADIS scope.
- Guided in using 2 instances of Euroscope. (GND + AIR view)

### MANAGEMENT

- Display management and priority of traffic, including effective handling of non-standard situations.
- Demonstrate sound judgment in managing RNAV STARs vs. vectors.
- Revert to basics to cope with increased traffic and know when to call for an extra controller.

- Consistent structure in approach management for all EKDK airports.
- Consistent structure in sequencing departures and arrivals.
- Provide TOP / DOWN services to high standards.
- Establish and manage holdings.

## PROCEDURES

---

- Provide appropriate instructions in accordance with PART-ATS.
- Repeatedly display good management in predicting flow and sequencing.
- Proficient in the differences between procedural, AFIS and Vector instructions.
- Able to analyze and understand all parts of charts for relevant airspace/airports.
- Able to get information about all procedures, for all airports in EKDK This through LAI, and charts.
- Know LOA procedures for neighboring ACC and comply with them.

## PHRASEOLOGY

---

- Able to distinguish and understand C1 phraseology.
- Flawless phraseology for standard operations, descents, speeds, and path corrections STARS' and SID's.
- Ability to find answers to several rare types of phraseology by navigating ATS Instruction 14.
- Correct AFIS phraseology and demonstrate knowledge of how to handle AFIS and procedural traffic.
- Give perfect Clearances, and instructions for different airports in EKDK.

## SEPERATION

---

- Demonstrate understanding of separation requirements.  
Both in EKDK, and when releasing to neighboring ACC
- Demonstrate separation mitigation in a timely manner.
- Demonstrate use of separation methods. (Vectors, speeds and altitude) and tactical directs.
- In theory displays adequate knowledge of wake turbulence, SID and performance separation.
- Display and use Altitude requirements (EAST / WEST routes)

## VFR

---

- Demonstrate knowledge of VFR principles and clearances in relevant airspace class.
- Demonstrate correct usage of VFR phraseology with only a few mistakes.
- Demonstrate appropriate traffic information in a timely manner.
- Able to resolve conflicts between VFR and IFR.

## LOCAL REGULATIONS

---

- Demonstrate a deep knowledge of LAI's for all airports in EKDK.
- Understand airspace classification and know the practical differences.