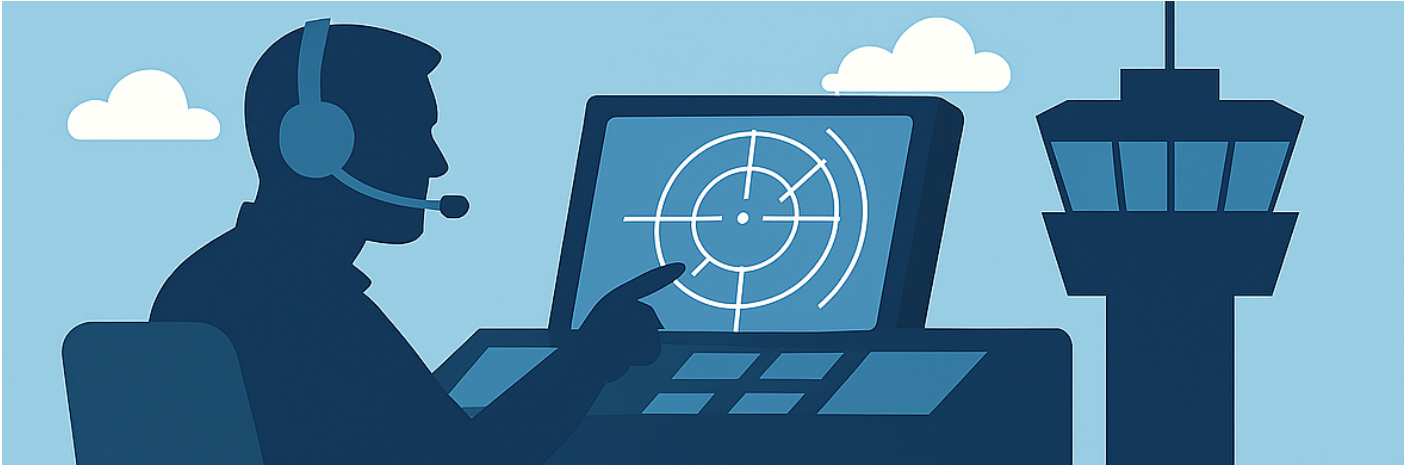


TRAINING SYLLABUS

- [INTRODUCTION](#)
- [S2 Syllabus](#)
- [S3 Syllabus](#)
- [C1 Syllabus](#)

INTRODUCTION



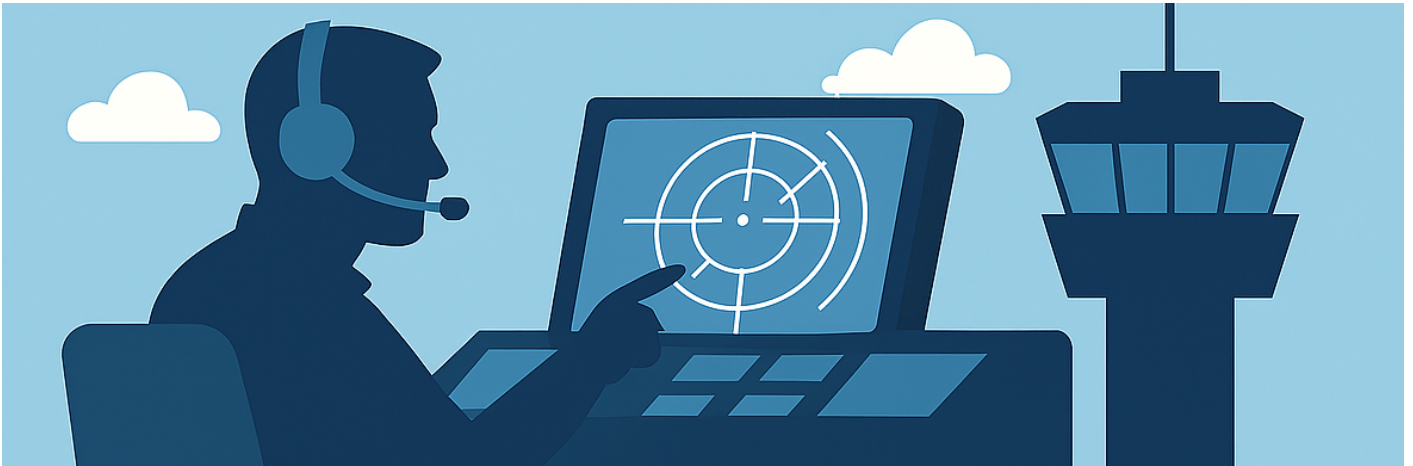
The following pages provide mentors with a complete checklist of the requirements for training students toward each rating.

Before the final proficiency check, the student must be taught — and be able to competently deliver — all relevant services.

If you have any questions or need guidance during the training process, please do not hesitate to contact us.

EKDK Training Department

S2 Syllabus



S2 TRAINING SYLLABUS - EKDK

The student must gain proficiency and knowledge in the following chapters.

EUROSCOPE

- Master all TAG manipulation.
Update tags with status, correct use of comments etc.
- Guided through and gain proficiency in all relevant TOPSKY items.
- Possible relevant tactical options in Euroscope for GND.

MANAGEMENT

- Management and priority of traffic, including effective handling of non-standard situations.
1: Airborne, 2: moving, 3: stationary, 5at stand.
- Demonstrate sound judgment in managing Arrivals and Departures.
Timely landing clearance. Departures according to SID etc.

- Revert to basics in order to cope with increased traffic.
Use standard taxi routes, pushpoints etc.

PROCEDURES

- Provide appropriate instructions in accordance with PART-ATS.
- Analyze and understand all parts of charts for relevant airspace/airports.
Ability to understand taxi, stand, airport procedures etc.
- Issue correct Push and Taxi instructions, according to standards.
- Consistent structure in giving Push and Taxi instructions.

PHRASEOLOGY

- Distinguish and understand S2 phraseology.
- Flawless phraseology for standard operations such as Clearances, instructions and informations.
Correct structure of clearances and instructions.
- Ability to find answers to several rare types of phraseology by navigating ATS Instruction 14.

SEPERATION

- Demonstrate understanding of conditional clearances.
Timely and relevant use of the conditional clearances.
- Demonstrate separation mitigation in a timely manner.
Strategies for avoiding conflicts on ground and RWY.
- Display adequate knowledge of wake turbulence, SID and performance separation and requirements.
Show that departures can be handled efficient while maintaining correct seperation.

VFR

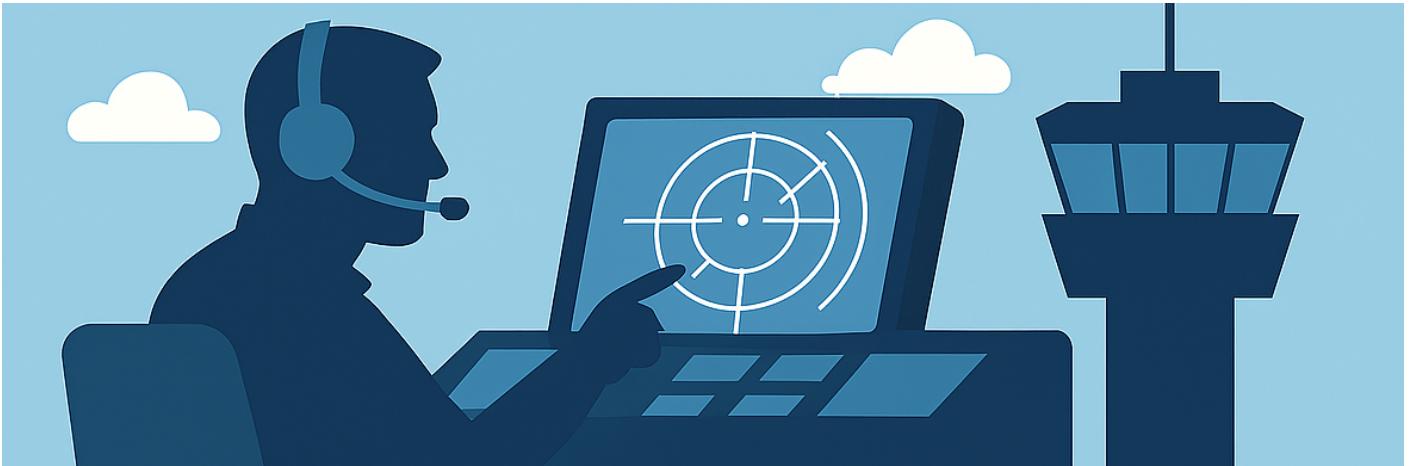
- Demonstrate knowledge of VFR principles and clearances in relevant airspace class.
- Demonstrate correct usage of VFR phraseology with only a few mistakes.
- Demonstrate appropriate traffic information in a timely manner.
- Resolve conflicts between VFR and IFR.

LOCAL REGULATIONS

- Student must demonstrate a deep knowledge of LAI - Billund, as well as all other relevant areas of airports student is likely to control (EKKA, EKAH, EKYT).
- LAI EKCH - Know all the aspects and keep being updated on changes.

TRAINING DEPARTMENT EKDK - FEBRUARY 2026

S3 Syllabus



S3 TRAINING SYLLABUS - EKDK

The student must gain proficiency and knowledge in the following chapters.

EUROSCOPE

- Master all TAG manipulation.
- Know all the possible relevant tactical options in Euroscope. Guided through and gain proficiency
- in all relevant TOPSKY items.
- Display effective usage of Euroscope's capabilities for Top Down.
- Proficient in the theory behind using the RADIS scope.

MANAGEMENT

- Display appropriate management and priority of traffic, including effective handling of non-standard situations.

- Demonstrate sound judgment in managing RNAV STARs vs. vectors.
- Revert to basics in order to cope with increased traffic.
- Consistent structure in final approach management.
- Consistent structure in sequencing departures and arrivals.
- Provide TOP / DOWN services to high standards.

PROCEDURES

- Provide appropriate instructions in accordance with PART-ATS.
- Repeatedly display good management in predicting flow and sequencing.
- Proficient in the differences between procedural, AFIS and Vector instructions.
- Analyze and understand all parts of charts for relevant airspace/airports.
- Know LOA procedures for neighboring ACC and comply with them.

PHRASEOLOGY

- Distinguish and understand S3 phraseology.
- Flawless phraseology for standard operations such as descents, speeds, and path corrections.
- Ability to find answers to several rare types of phraseology by navigating ATS Instruction 14.
- AFIS phraseology and demonstrate knowledge of how to handle AFIS and procedural traffic.

SEPERATION

- Demonstrate understanding of separation requirements.
- Demonstrate separation mitigation in a timely manner.
- Demonstrate use of separation methods. (Vectors, speeds and altitude) and Tactical directs.
- Display adequate knowledge of wake turbulence, SID and performance separation and requirements.

VFR

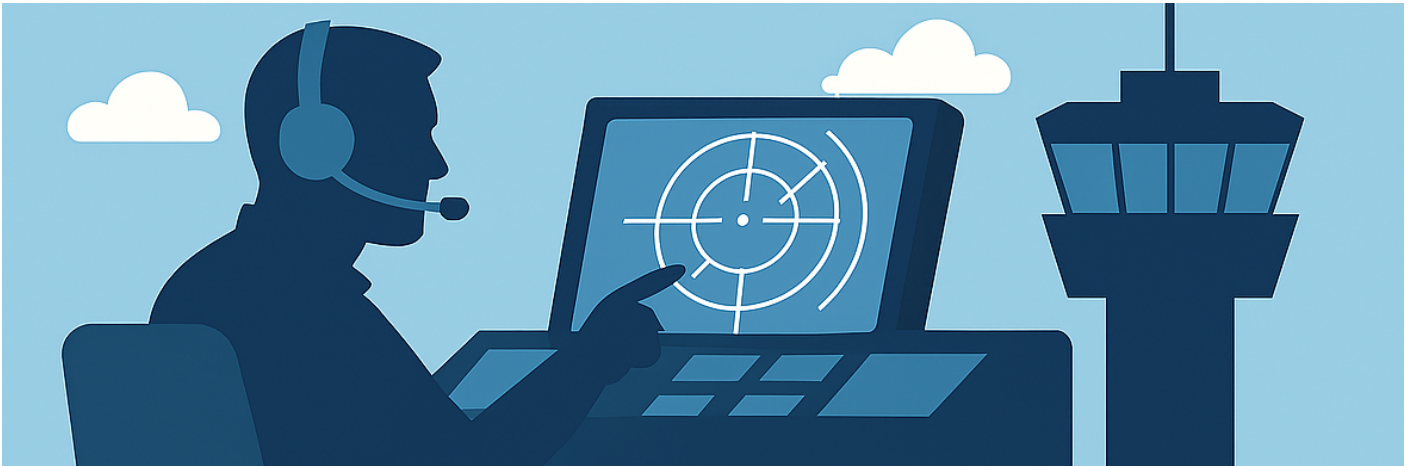
- Demonstrate knowledge of VFR principles and clearances in relevant airspace class.
- Demonstrate correct usage of VFR phraseology with only a few mistakes.
- Demonstrate appropriate traffic information in a timely manner.
- Resolve conflicts between VFR and IFR

LOCAL REGULATIONS

- Demonstrate a deep knowledge of LAI Billund, as well as all other relevant areas of airports the student is eligible and likely to control (EKKA, EKAH, EKYT).
- T1 endorsement for EKCH requires deep knowledge of LAI for EKCH / EKRK
- Student must understand airspace classification and know the practical differences.

TRAINING DEPARTMENT EKDK – FEBRUARY 2026

C1 Syllabus



C1 TRAINING SYLLABUS - EKDK

The student must gain proficiency and knowledge in the following chapters.

EUROSCOPE

- Master all TAG manipulation.
- Know all the possible relevant tactical options in Euroscope.
- Guided through and gain proficiency in all relevant TOPSKY items.
- Proficient in the theory behind using the RADIS scope.
- Guided in using 2 instances of Euroscope. (GND + AIR view)

MANAGEMENT

- Display management and priority of traffic, including effective handling of non-standard situations.
- Demonstrate sound judgment in managing RNAV STARs vs. vectors.
- Revert to basics to cope with increased traffic and know when to call for an extra controller.

- Consistent structure in approach management for all EKDK airports.
- Consistent structure in sequencing departures and arrivals.
- Provide TOP / DOWN services to high standards.
- Establish and manage holdings.

PROCEDURES

- Provide appropriate instructions in accordance with PART-ATS.
- Repeatedly display good management in predicting flow and sequencing.
- Proficient in the differences between procedural, AFIS and Vector instructions.
- Able to analyze and understand all parts of charts for relevant airspace/airports.
- Able to get information about all procedures, for all airports in EKDK This through LAI, and charts.
- Know LOA procedures for neighboring ACC and comply with them.

PHRASEOLOGY

- Able to distinguish and understand C1 phraseology.
- Flawless phraseology for standard operations, descents, speeds, and path corrections STARS' and SID's.
- Ability to find answers to several rare types of phraseology by navigating ATS Instruction 14.
- Correct AFIS phraseology and demonstrate knowledge of how to handle AFIS and procedural traffic.
- Give perfect Clearances, and instructions for different airports in EKDK.

SEPERATION

- Demonstrate understanding of separation requirements.
Both in EKDK, and when releasing to neighboring ACC
- Demonstrate separation mitigation in a timely manner.
- Demonstrate use of separation methods. (Vectors, speeds and altitude) and tactical directs.
- In theory displays adequate knowledge of wake turbulence, SID and performance separation.
- Display and use Altitude requirements (EAST / WEST routes)

VFR

- Demonstrate knowledge of VFR principles and clearances in relevant airspace class.
- Demonstrate correct usage of VFR phraseology with only a few mistakes.
- Demonstrate appropriate traffic information in a timely manner.
- Able to resolve conflicts between VFR and IFR.

LOCAL REGULATIONS

- Demonstrate a deep knowledge of LAI's for all airports in EKDK.
- Understand airspace classification and know the practical differences.