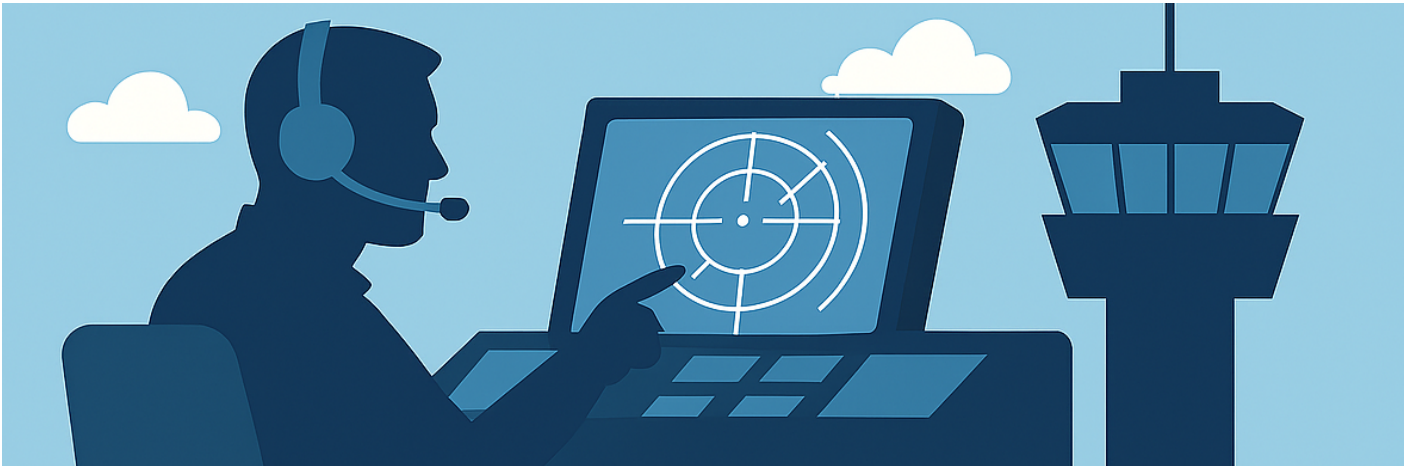


S2 Syllabus



S2 TRAINING SYLLABUS - EKDK

The student must gain proficiency and knowledge in the following chapters.

EUROSCOPE

- Master all TAG manipulation.
Update tags with status, correct use of comments etc.
- Guided through and gain proficiency in all relevant TOPSKY items.
- Possible relevant tactical options in Euroscope for GND.

MANAGEMENT

- Management and priority of traffic, including effective handling of non-standard situations.
1: Airborne, 2: moving, 3: stationary, 5at stand.
- Demonstrate sound judgment in managing Arrivals and Departures.
Timely landing clearance. Departures according to SID etc.

- Revert to basics in order to cope with increased traffic.
Use standard taxi routes, pushpoints etc.

PROCEDURES

- Provide appropriate instructions in accordance with PART-ATS.
- Analyze and understand all parts of charts for relevant airspace/airports.
Ability to understand taxi, stand, airport procedures etc.
- Issue correct Push and Taxi instructions, according to standards.
- Consistent structure in giving Push and Taxi instructions.

PHRASEOLOGY

- Distinguish and understand S2 phraseology.
- Flawless phraseology for standard operations such as Clearances, instructions and informations.
Correct structure of clearances and instructions.
- Ability to find answers to several rare types of phraseology by navigating ATS Instruction 14.

SEPERATION

- Demonstrate understanding of conditional clearances.
Timely and relevant use of the conditional clearances.
- Demonstrate separation mitigation in a timely manner.
Strategies for avoiding conflicts on ground and RWY.
- Display adequate knowledge of wake turbulence, SID and performance separation and requirements.
Show that departures can be handled efficient while maintaining correct seperation.

VFR

- Demonstrate knowledge of VFR principles and clearances in relevant airspace class.
- Demonstrate correct usage of VFR phraseology with only a few mistakes.
- Demonstrate appropriate traffic information in a timely manner.
- Resolve conflicts between VFR and IFR.

LOCAL REGULATIONS

- Student must demonstrate a deep knowledge of LAI - Billund, as well as all other relevant areas of airports student is likely to control (EKKA, EKAH, EKYT).
- LAI EKCH - Know all the aspects and keep being updated on changes.

TRAINING DEPARTMENT EKDK - FEBRUARY 2026

Revision #8

Created 11 February 2026 19:05:29 by Jesper Hvenegaard (1745220)

Updated 11 March 2026 21:42:33 by Thomas Broegger (1447687)