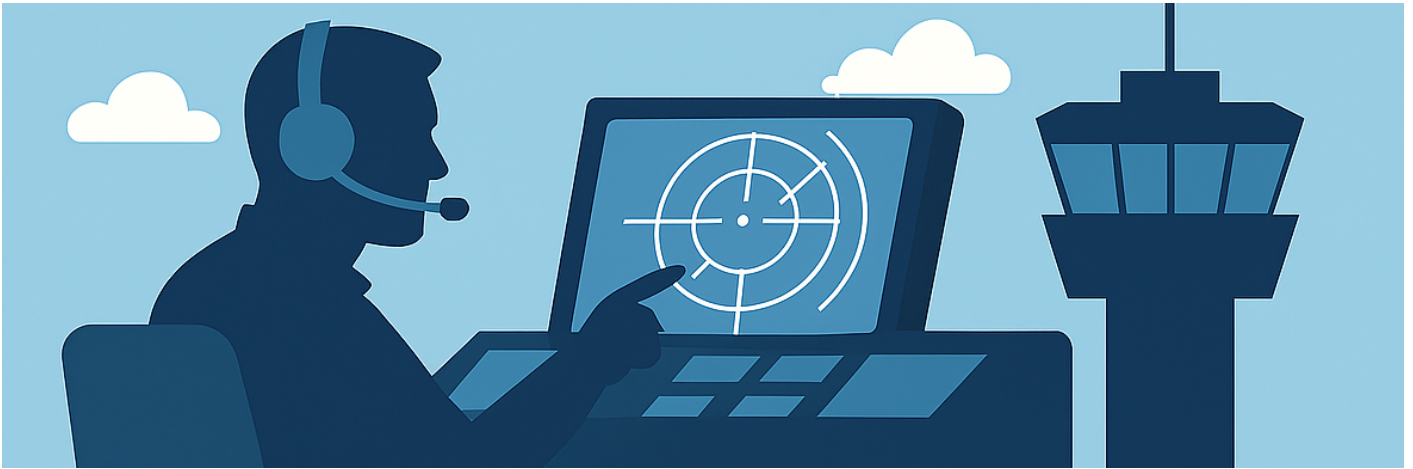


S3 Syllabus



S3 TRAINING SYLLABUS - EKDK

The student must gain proficiency and knowledge in the following chapters.

EUROSCOPE

- Master all TAG manipulation.
- Know all the possible relevant tactical options in Euroscope. Guided through and gain proficiency
- in all relevant TOPSKY items.
- Display effective usage of Euroscope's capabilities for Top Down.
- Proficient in the theory behind using the RADIS scope.

MANAGEMENT

- Display appropriate management and priority of traffic, including effective handling of non-standard situations.

- Demonstrate sound judgment in managing RNAV STARs vs. vectors.
- Revert to basics in order to cope with increased traffic.
- Consistent structure in final approach management.
- Consistent structure in sequencing departures and arrivals.
- Provide TOP / DOWN services to high standards.

PROCEDURES

- Provide appropriate instructions in accordance with PART-ATS.
- Repeatedly display good management in predicting flow and sequencing.
- Proficient in the differences between procedural, AFIS and Vector instructions.
- Analyze and understand all parts of charts for relevant airspace/airports.
- Know LOA procedures for neighboring ACC and comply with them.

PHRASEOLOGY

- Distinguish and understand S3 phraseology.
- Flawless phraseology for standard operations such as descents, speeds, and path corrections.
- Ability to find answers to several rare types of phraseology by navigating ATS Instruction 14.
- AFIS phraseology and demonstrate knowledge of how to handle AFIS and procedural traffic.

SEPERATION

- Demonstrate understanding of separation requirements.
- Demonstrate separation mitigation in a timely manner.
- Demonstrate use of separation methods. (Vectors, speeds and altitude) and Tactical directs.
- Display adequate knowledge of wake turbulence, SID and performance separation and requirements.

VFR

- Demonstrate knowledge of VFR principles and clearances in relevant airspace class.
- Demonstrate correct usage of VFR phraseology with only a few mistakes.
- Demonstrate appropriate traffic information in a timely manner.
- Resolve conflicts between VFR and IFR

LOCAL REGULATIONS

- Demonstrate a deep knowledge of LAI Billund, as well as all other relevant areas of airports the student is eligible and likely to control (EKKA, EKAH, EKYT).
- T1 endorsement for EKCH requires deep knowledge of LAI for EKCH / EKRK
- Student must understand airspace classification and know the practical differences.

TRAINING DEPARTMENT EKDK – FEBRUARY 2026

Revision #11

Created 11 February 2026 18:49:32 by Jesper Hvenegaard (1745220)

Updated 12 February 2026 21:29:27 by Jesper Hvenegaard (1745220)